

TEL DOR 19 86 field G square AJ.3.2 phase (in sq.): TOPSOIL LOCUS L9.0.0.1

date opened 0.3/0.7/8.6 level 1.6.3.9 date closed 0.8/0.7/8.6 level 1.6.0.3 floor level - type of locus Surface Soil

loci above None loci below 9.0.1.2, 9.0.0.0 sealed by -

graphic description

final locus no. - arch. unit/logical area - stage (in sq.) - final STRATUM -

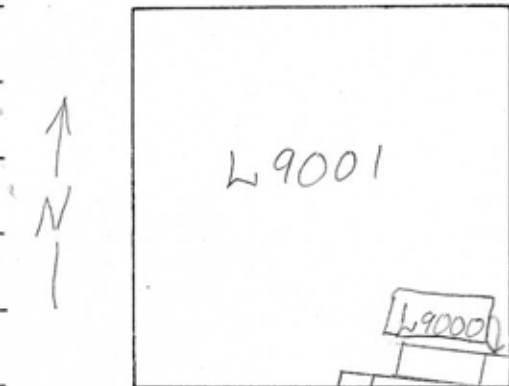
**OPENED** L9001 was opened to excavate the surface soil covering the entire extent of the square.

**DEFINITION/LIMITS** L9001 covered the entire extent of the square.

**CLOSED** L9001 was closed when one whole stone block and parts of others were found in the southeast corner of the square. These blocks are a northward extension of L9000.

**RELATIONSHIP TO OTHER ELEMENTS** The soil of L9001 covered the stone paving blocks in the southeast corner of the square L9000.

**MATRIX** L9001 was composed of fine brown soil with many small rocks and tesserae. Broken roof tiles were scattered throughout. Toward the bottom of L9001 larger unworked stones were found, and the number of tesserae decreased.



photos

please check (+ or -) when closing locus:

- reason for opening
- definition/ limits
- reason for closing
- relation to other elements
- working photos, nos:
- publication photos
- architect's permission

LOCUS L19001 BASKET LIST

basket no.	level	str def	cont	R +	periods	comments
90001	1628	01	01	0	12	weathered
90004	1614	01	01	0	12	worn E.T.S., Hellenistic black glaze, Attic, 02-05
90006	1614	01	13			glass
90007	1614	01	04			bronze nail
90008	1614	01	13			glass bead
90010	1603	01	01	0		E.T.S., Attic classic black glaze, Iron Age, Persian to Roman
90012	1603	01	13			glass
90014	1603	01	10			lead (spike?)
90019	1607	01	01	1	12	1 glazed yellowish, 1 figurine fragment
90021	1608	01	13			glass
90026	1607	01	11			bones