

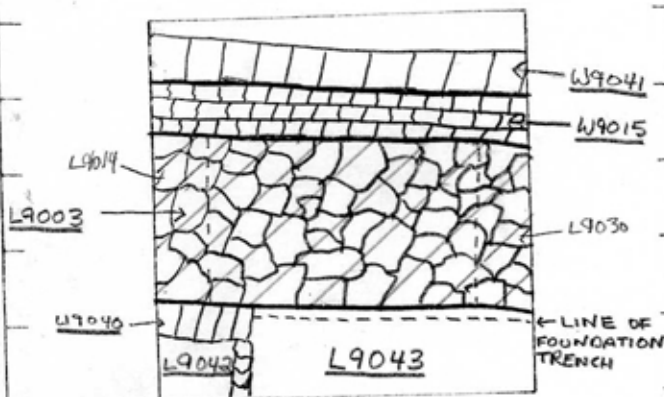
TEL DOR 19 86 field 16 square A.J.3.3 STRATUM 1a LOCUS W9.0.0.3  
 date opened 07/07/86 level 1.6.3.8 date closed 1.1/0.8/86 level 1.5.0A floor level type of locus (B06)  
 loci above 9.0.0.2 loci below sealed by

graphic description

final locus no.

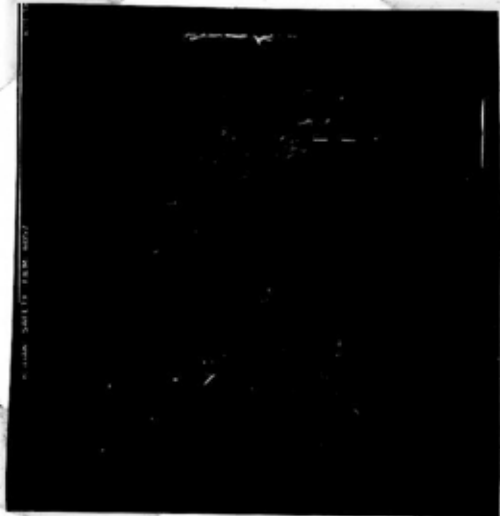
arch. unit

description:



REASON FOR OPENING: DISCOVERED AN AREA OF CONCRETE + RUBBLE IN NE QUADRANT OF AS 33. [L9002] SPLIT INTO [L9003] & [L9004]  
 DEFINITION/LIMITS: DEFINED BY [W9015] ON THE NORTH, 1.6 METER WIDE FOUNDATION WALL STRETCHING FROM EAST TO WEST BANKS  
 REASON FOR CLOSING: END OF SEASON (NOT CLOSED)  
 RELATION TO OTHER ELEMENTS: [L9003] IS BUILT AGAINST [W9015]. [L9003] IS ALSO BUILT AGAINST THE NORTH SIDE OF [W9040]. THE FOUNDATION TRENCH ON THE SOUTH SIDE OF [L9003] CUTS [L9008], [L9024] AND PART OF [L9031]. AFTER CUTTING [L9031] FOR APPROX. 50 CM. [L9003] FLOATS UPON IT. [L9003] FLOATS ABOVE [L9043] (MUD BRICK MATERIAL ON THE NORTH OF L9043 MAY EXTEND ALL THE WAY UNDER [L9003] SINCE THE SAME MATERIAL APPEARED ABOVE THE TOP COURSE OF ASHLARS OF [W9041])  
 BOTH LOCI [9030] AND [9014] ARE RUBBER TRENCHES OF [L9003].

photos



MATRIX [L9003] IS COMPOSED OF LARGE IRREGULAR STONE IN SOFT CONCRETE. DIMENSIONS ARE 1.20 METERS DEEP 1.60 WIDE 4.5 METERS LONG

PUBLICATION PHOTO'S M7.009.04 FACING E  
 .05 FACING S

WORKING PHOTOS

NOTE [L9003] MAY REST IN A V-SHAPED TRENCH WHICH HIDES ITS TRUE BOTTOM. IT MAY CUT MUCH DEEPER THAN IS VISIBLE.

OVER ⇒

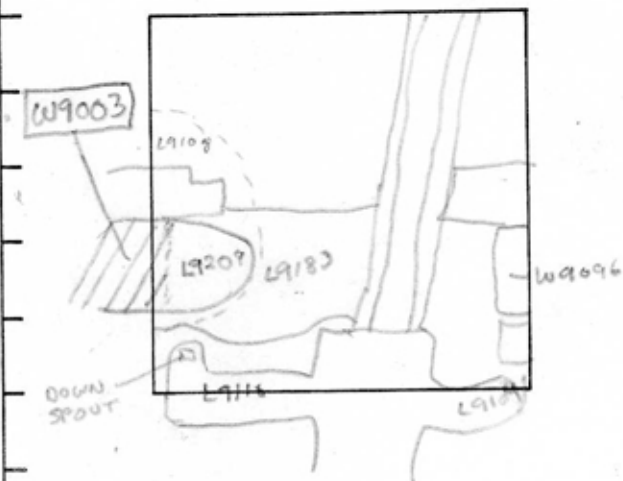


TEL DOR 19 87 field G square AJ 33 phase (in area): LOCUS L19003

date opened \_\_\_\_\_ level \_\_\_\_\_ date closed \_\_\_\_\_ level \_\_\_\_\_ floor level \_\_\_\_\_ type of locus FOUNDATION WALL

loci above \_\_\_\_\_ loci below \_\_\_\_\_ sealed by \_\_\_\_\_

graphic description



section

photos

- reason for opening
- definition / limits
- reason for closing
- relation to other elements
- working photos, nos: # 34473 # 34474
- publication photos
- architects permission

written by ALLEN ESTES checked by JZorn

final locus no. \_\_\_\_\_ arch. unit / logical area \_\_\_\_\_ stage (in sq.) \_\_\_\_\_ final STRATUM \_\_\_\_\_

Summary:

Description:

OPENED: SEE 1986 CARD FOR JO AT 33

DEFINITION/LIMITS: ONLY THIN LAYER OF CEMENT (3cm THICK) OF W9003 EXTENDED INTO AT 33 = L9209, SURROUNDED BY MUDBRICK L9193. LEVEL OF CEMENT = 14.83

MATRIX: SEE 1986 CARD FOR AJ 33.

REASON FOR CLOSING: SEE 1986 CARD FOR AJ 33.

RELATION TO OTHER ELEMENTS: W9003 WAS FOUND RODDED OUT = ROBBED TRENCH L9108, ONLY A THIN LAYER OF CEMENT WAS FOUND AT BOTTOM OF L9108. W9003 CUTS INTO MUDBRICK DEBRIS = L9183 & L9209.

EVIDENTLY W9003 ENDED HERE. NO EVIDENCE FOUND OF ITS TURNING. A DOWN SPOUT OF DRAIN L9110 WAS FOUND INSTANTLY WHICH WAS RELATED TO THE STRUCTURE ON W9003. W9096 AND L9109 (w/ DOWN SPOUT) FOUND WHICH MAY BE SOME

KIND OF PARALLEL CONSTRUCTION (SEE CARDS FOR THESE LOCI).

OK



TEL DOR

1988

field

G

square

AK 33

phase (in area):

1a

LOCUS

W19003

card 2

date opened

14/07/88

level

L620

date closed

12/08/88

level

floor level

type of locus

Wall-Rubble & Cement  
Foundation

loci above

L9220

loci below

sealed by

graphic description



section

See Back

photos

- reason for opening
- definition/limits
- reason for closing
- relation to other elements
- working photos, nos:
- publication photos
- architects permission

written by A. Papelchecked by J. Zorn

final locus no.

arch. unit / logical area

stage (in sq.)

final STRATUM

Summary:

Description:

Reason for opening: Excavation in Square AK 33 revealed [W9003] below [L9220]

Definition/Limits: [W9003] extends approximately E-W across Square AK 33 into the E &amp; W Baulks

Reason for Closing: Not Closed: End of Season

Relation to Other Elements: [W9003] lies under [L9220]

[W9003] cuts [L9238] &amp; [L9271] to the N. To the S,

[W9003] cuts [L9237], [L9242], [L9244], [W9243], [L9263], [W9147], [L9270], [L9285], &amp; [L9283]

Matrix: Rubble &amp; cement foundation containing "head" &amp; "head-and-one-half" size rocks.

Note: Sections of [W9003] were removed in order to trace extents of [W9243] &amp; [W9147].

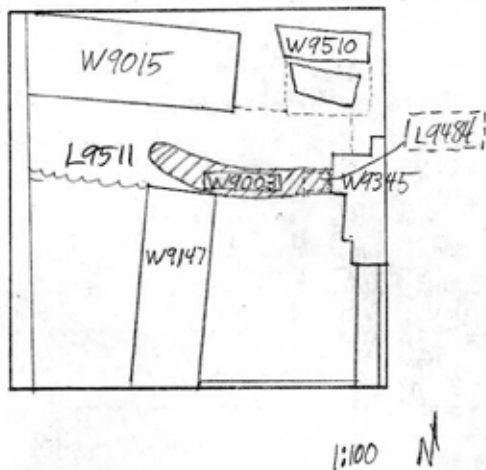
This is a continuation of the Blok in A533. See that card for more

details. Paving stones of [L9237] reached [W9003], though they were here in reuse. It is possible that this material is actually debris back-filled into a rather trench of [W9003]



TEL DOR 1989 field G square AK33 phase (in area): 1a LOCUS W9003  
 date opened 21/07/89 level 1597 date closed 27/07/89 level 1545 floor level \_\_\_\_\_ type of locus WALL  
 loci above L9220 loci below L9484 L9511 sealed by \_\_\_\_\_

## graphic description



## section

## photos

- reason for opening  
 definition / limits  
 reason for closing  
 relation to other elements  
 working photos, nos:  
 publication photos  
 architects permission

written by R. Littlebridge checked by J. Zorn

final locus no. \_\_\_\_\_ arch. unit / logical area \_\_\_\_\_ stage (in sq.) \_\_\_\_\_ final STRATUM \_\_\_\_\_

## Summary:

Description: REASON FOR OPENING: OPENED 1988, SEE CARD 1.

DEF./LIMITS: SEE CARD 1.

MATRIX: DENSE, BROWN SOIL IN THE E, BREAKS INTO CLODS. THE W HALF A GRAY, POWDERY SOIL WITH SOME CONCRETE CONTENT, KUR-KAR RUBBLE THROUGHOUT, FIST TO HEAD SIZE.

REASON FOR CLOSING: LEVELED TO HEIGHT OF L9511.

RELATION TO OTHER ELEMENTS: W9003 PARTIALLY COVERS L9511, FULLY COVERS L9484 AND ABUTS W9345.

L/W9003 was left as a slightly curving raised pedestal at the end of the '88 season. At the beginning of the '89 season it was

determined that this band of debris was only one part of a larger E-W rubble trench, which in the main had been L9271. L9271 + W9003 became L9511 once W9003 was removed to the level of L9271. W9003 in AK33 should not be understood to be the same construction as in AJ33; it was mistakenly given this number because at the time it was believed that W9003 had to extend into AK33 as a wall, or a rubble trench. Only what came to be called W9003 in AK33 seemed

