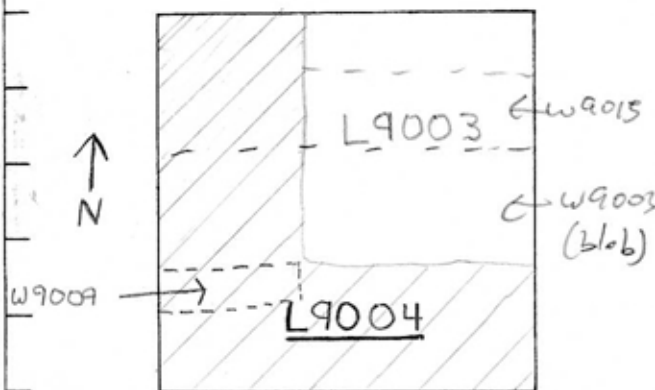


TEL DOR 19 86 field G1 square A.J.3.3 phase (in sq.): — LOCUS L19.0.0.4

date opened 07/07/86 level 16.25 date closed 07/07/86 level 16.08 floor level — type of locus TOPSOIL

loci above 9.0.0.2, loci below 9.0.0.8, 9.0.0.9, sealed by

graphic description



final locus no. arch. unit/logical area stage (in sq.) final STRATUM

OPENED: DUE TO THE DISCOVERY OF [L9003], AN AREA OF RUBBLE AND TOPSOIL

DEFINITION/LIMITS: AREA NOT INCLUDED IN [L9003]; AN L-SHAPED SECTION ALONG THE WEST AND SOUTH BORDERS OF THE SQUARE.

MATRIX: BROWN TOPSOIL WITH FEW SHERDS AND MANY TESSERAE. SMALL RUBBLE STONES, CRUSHED KURKAR AND SMALL FRAGMENTS OF CONCRETE WERE FOUND IN THE ENTIRE LAYER.

REASON FOR CLOSING: WHEN [W9009] APPEARED [L9004] WAS SPLIT INTO [L9010] + [L9008].

RELATION TO OTHER ELEMENTS: [L9004] REACHES THE SOUTHERN AND

WESTERN FACES OF [W9003]

Is '02: disturbed: includes part of Blok's robber trench (W9003), part of the robber trench at W9015, part of the (hypothetical) R.T. of W9009 & partly material to the sides of all that.

photos

please check (+or-) when closing locus:

- reason for opening
- definition/ limits
- reason for closing
- relation to other elements
- working photos, nos:
- publication photos
- architect's permission

