

TEL DOR 19 86 field 16 square AJ.3.3 phase (in sq.): 4/2?? LOCUS L1910108

date opened 08/07/86 level L6.08 date closed 11/07/86 level L5.71 floor level L5.92 - L5.71 type of locus FIL OVER KURKAR FLOOR

loci above 91014, loci below 91024, sealed by

graphic description

final locus no. arch. unit/logical area stage (in sq.) final STRATUM

OPENED: UPON DISCOVERY OF [W9009] SPLITTING [L9004] INTO [L9010 + L9008]

DEFINITION/LIMITS: SECTION ON THE SOUTH SIDE OF AT23 REACHING EAST, WEST AND SOUTH BALKS. DEFINED ON THE NORTH BY THE SOUTH FACES OF [W9009] + [L9003]. FLOOR 9002 SLOPES FROM WEST TO EAST.

REASON FOR CLOSING: REACHED FLOOR [9002]

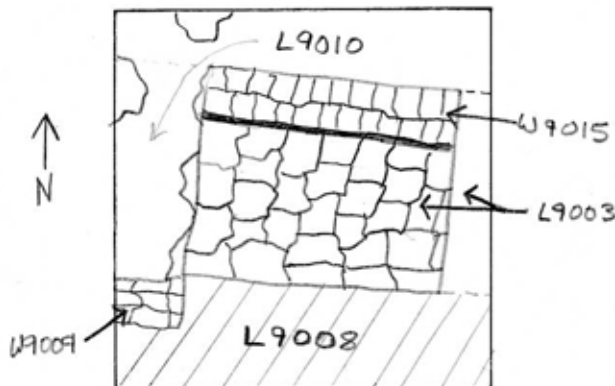
MATRIX: RICH BROWN SOIL, FAIRLY SANDY WITH LOTS OF CRUSHED KURKAR. POTTERY SHARDS MORE COMMON NEAR THE FLOOR.

RELATION TO OTHER ELEMENTS: [L9008] REACHES THE SOUTHERN FACES OF [L9003] + [W9009]. FLOOR 9002 DEFINITELY REACHES [W9009]'S SOUTHERN FACE BUT IT IS UNCLEAR WHETHER IT EVER REACHED [L9003]. FLOOR SLOPES DOWN TO THE EAST.

PHOTO # M7011.06 FACING W

AFTERNOTE: IT APPEARS (AFTER CLOSER EXAMINATION OF THE BALK) THAT FLOOR 9002 IS CUT BY THE FOUNDATION TRENCH OF [L91003].

Same as F9012 in AT 32



photos

please check

- reason for opening
- definition/limits
- reason for closing
- relation to other elements
- working photo
- publication
- architect's plan

