

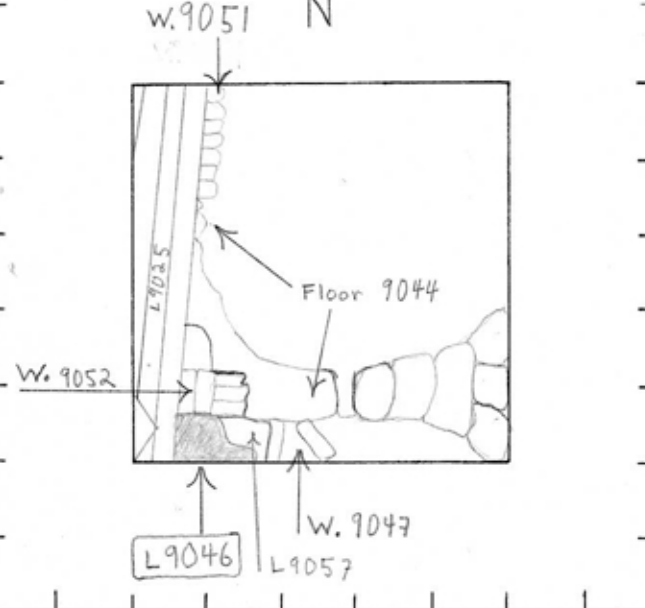
TEL DOR 19 86 field 16 square A.I.3.1 phase (in sq.): LOCUS L19.0.4.6

date opened 28/07/86 level 15.08 date closed 07/08/86 level 14.91 floor level 18.06 - 14.91 type of locus fill on floor

loci above 9.0.3.9 loci below sealed by

graphic description

final locus no. arch. unit/logical area stage (in sq.) final STRATUM



OPENED: to distinguish deposit of soil in SW corner from rubble/walls L9045

DEFINED: To south by baulk, to west by drain [L9025], to north by wall 9052, to east by rubble [L9057].

CLOSED: Came down on rubble/stone surface 9046.

RELATION: Drain [L9025] floods above floor [L9046]. [W 9052] both lies above and cuts floor [L9046]. Rubble [L9057] lies above floor [L9046]. It is cut by Wall [L9047]. Floor [L9046] is a continuation of floor [L9044]. This was definitively

photos

please check (+or-) when closing locus:

- reason for opening
- definition/ limits
- reason for closing
- relation to other elements
- working photos, nos: 70.32.03; M7033.01-03
- publication photos 86.04.30; 86.04.31
- architect's permission Yes.

This was definitively determined after the removal of wall L9052.

Drain [L9025] rests on that part of [L9046] that extends beneath the drain light matrix = hard-packed soil, few stones or sherds

