

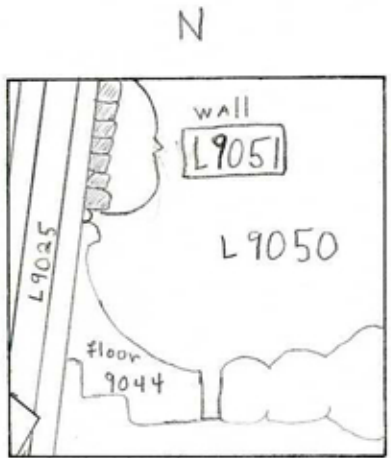
TEL DOR 1986 field 16 square A.I.3.1 phase (in sq.): LOCUS W19.0.5.1

date opened 2.9/0.7/8.6 level \* 1.5.27 date closed 1.1/0.8/8.6 level 1.5.0.2 floor level - - - - - type of locus WALL

loci above 9.0.3.9, 9.0.2.5, loci below 9.0.5.4, sealed by

graphic description

final locus no. arch. unit/logical area stage (in sq.) final STRATUM



OPENED: When top of wall was uncovered.

DEFINITION: Extends out of north bank in southerly direction for 1.5m. Delimited on east by [L.9044] and partially covered on west by drain [9025].

CLOSED: End of season. not closed.

RELATION: In situ within L.9025, Reaches floor 9044, and L9050; extends into north bank. Rests on drain 9044 and drain 9025 rests directly on wall 9051.

MATRIX: Mainly Header wall of ant

photos

please check (+ or -) when closing locus:

- reason for opening
- definition/ limits
- reason for closing
- relation to other elements
- working photos, nos:
- publication photos
- architect's permission

Header wall of ant  
kharbar stones varying in size but averaging  
ca 16cm in width x .25 by at least .32.  
Only 1 course preserved.

TEL DOR

1987

field

a

square

AI 32

phase (in area):

LOCUS

W 3051

date opened

16/07/87

level 15,31 -

15,27

date closed

05/08/87

level 15,14 -

14,98

floor level

type of locus  
HEADER  
WALL

loci above

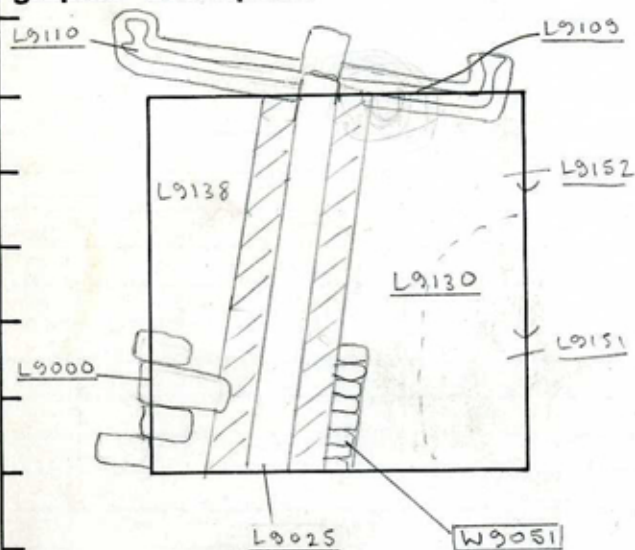
L9099

L9025

loci below

sealed by

graphic description



section

photos

- reason for opening
- definition / limits
- reason for closing
- relation to other elements
- working photos, nos:
- publication photos
- architects permission

written by

C. Hallett

checked by

J. Zorn

OK

final locus no.

arch. unit / logical area

stage (in sq.)

final STRATUM

Summary:

Description:

REASON FOR OPENING DISCOVERY OF TOP OF WALL

DEFINITION / LIMITS EXTENDS OUT OF SOUTH BALK IN A NORTHERLY DIRECTION FOR APPROX 2m. BOUNDED ON EAST BY L9130 (ABOVE) AND L9152 (BELOW L9130). PARTLY COVERED ABOVE BY DRAIN L9025 ON WEST, THE REST WAS BELOW L9099

MATRIX HEADER WALL OF ROUGHLY CUT KURMAR STONES OF VARIOUS SIZES, 15-23 CMS IN WIDTH, UP TO 50 CMS IN LENGTH, AND SOME 25-30 CMS DEEP. ONLY ONE COURSE PRESERVED

REASON FOR CLOSING NOT CLOSED - END OF SEASON

RELATION TO OTHER ELEMENTS IF W9051 IS A FOUNDATION COURSE THEN IT CUTS L9130 (ABOVE) AND ALSO L9152 (BELOW) - WHICH BOTH CONSIST OF THE SAME MATERIAL. DRAIN L9025 RESTS ON PART OF W9051 - THE REST WAS COVERED BY L9099 - THE SAME CLAY MATERIAL AS L9130 AND L9152. W9051 EXTENDS NORTH INTO THE SQUARE FROM SQUARE AI 32. W9051 MAY POSSIBLY BE ASSOCIATED WITH THE FOUNDATION COURSE OF W9147 IN AI 32 WHICH



TEL DOR

19 89

field

G

square

AI.3.2

phase (in area):

LOCUS

card 2  
W9.0.5.1

date opened

16/07/87

level

15.27-15.31

date closed

26/07/89

level

14.98-15.13

floor level

type of locus

Header Wall

loci above

L9099

L9025

loci below

L9495

sealed by

graphic description



section

photos

- reason for opening
- definition / limits
- reason for closing
- relation to other elements
- working photos, nos: #48412
- publication photos
- architects permission

written by R. Rahmanchecked by J. Zorn

final locus no.

arch. unit / logical area

stage (in sq.)

final STRATUM

Summary:

Description:

Opening Discovery of top of wall in 1987 season

Def &amp; Limits To W, bordered by L9450. To N&amp;E, bordered by L9152. To S bordered by Sq. AI 31.

Matrix See card 1.

Closing Removal of wall W9051

Relations To W, probably cuts L9442 &amp; L9450, but possible floor of L9442 might reach W9051. L9419 (floor makeup of drain L9025) built partially on top of W9051, and so is later than W9051. To N &amp; E, probably cuts L9152. W9051

seals L9495 below



|                  |                       |                 |                |                   |
|------------------|-----------------------|-----------------|----------------|-------------------|
| Locus<br>W 9,951 | Dor 19 <sup>9.1</sup> | Fld G           | Sq A.1.33      | Loc. type<br>Wall |
| Open             | Date 12/27/91         | High at 15.43 N | Low at 15.36 S | Seals: _____      |
| Close            | 3/07/91               | 15.17 N         | 15.11 S        | Sealed by: _____  |
| Floor: type      |                       |                 |                | Loci 9,111, 9,925 |
| Length 3.6       | Width 0.5             | Vol             |                | above _____       |
| Value 1          | Remove 3/07/91        | Drawn? YES      |                | below _____       |
| Photo #(1) 70602 | Photo #(2) 70603      |                 |                | Loci 9,716, 9,726 |
| Written by: RSS  | Checked by: JRZ       |                 |                |                   |

|      |       |       |         |     |
|------|-------|-------|---------|-----|
| Unit | Phase | Stage | Stratum | PoM |
|------|-------|-------|---------|-----|

Summary

Opened: When L9111 was removed, the foundation was found to continue with W9051 in A131 and A132

Limits (N) W9278 and L9667.

(S) L9375, L9667, L9666

(E) L9638, L9665, and L9666

(W) L9631, L9619, L9639, L9648, L9419 and drain interchange L9025/L9111

Closed: When removed.

Matrix: Two-phase well - Upper (B) - 4 large headers, 2 large ashlar, many head size cobbles, several smaller cobbles - Lower (A) - Many head and double-head size cobbles. Phase A very similar to W9278, though phase B was not so similar.

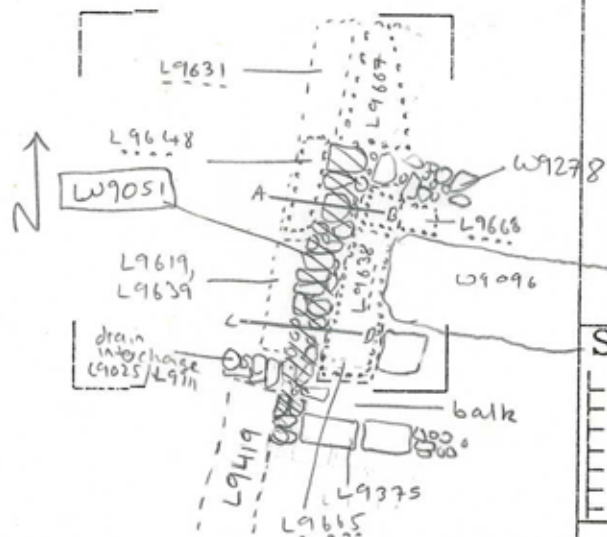
Relations: W9051 cuts L9667, IA cobble fall, to the N., L9638, L9665, and L9666 to the E., and L9639, and L9646 to the W. L9631, L9619 and L9419, all Roman period fills below drains L9111 and L9025, and drain interchange L9025/L9111 reach the W. face of W9051. W9051 dovetails with L9375, floor to drain L9109, to the S. W9051 dovetails with W9278 to the N. W9051 covers and seals L9716; it's FT, and covers, wts and seals L9726, mud-brick debris. L9111 is built on top of and partly cuts W9051. Phase B overhangs phase A approximately 10 cm to the W. Phase A was definitely laid down at the same time as the lower course of W9278 and probably the same time as W9278's upper course also. Phase B was laid down later, either as rebuilding of W9051 or as a foundation for L9111 and L9025. W9051 is on a line with W9051 in A132 and A131, though in these squares it is a purely header well. It is possible that these represent two different wells. A133's W9051 phase B may be purely a foundation for L9111 while A131 and A132's W9051 may have been opportunistically used header well (or vice versa). Also, at it's S. point W9051 (A133) meets a corner with L9375.

Also photos 70569 and 70570

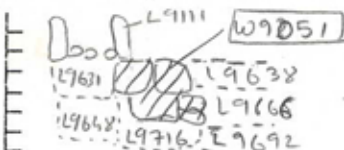
Additional Observations/Value: Two-phase wall dovetailing with W9278 and L9375 and foundation for L9111 and L9025, seals material below. Important

Locus  
 1290.5.1

Sketch plan

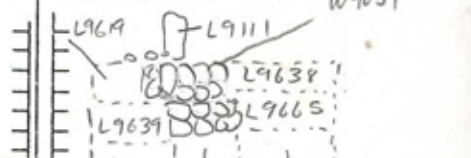


Section A-B



facing N.

Section C-D



L9694 L9716 L9692

facing



|                        |                    |                   |                          |                          |
|------------------------|--------------------|-------------------|--------------------------|--------------------------|
| Locus<br>W 9051        | Dor 1917           | Fld G             | Sq A131                  | Loc. type<br>Achlar Wall |
| Open Date<br>07/07/17  | High at<br>15.28 S | Low at<br>15.27 N | Seals: _____             |                          |
| Close Date<br>07/07/17 | 15.05 S            | 15.05 N           | Sealed by: _____         |                          |
| Floor: type<br>1.5     | Width<br>0.5       | Vol<br>_____      | Loci 9025<br>above _____ |                          |
| Value<br>i             | Remove<br>07/07/17 | Drawn? Yes        | Loci<br>below _____      |                          |
| Photo #(1) _____       | Photo #(2) _____   |                   |                          |                          |
| Written by: JEM        | Checked by: JRZ    |                   |                          |                          |

|            |             |             |               |           |
|------------|-------------|-------------|---------------|-----------|
| Unit _____ | Phase _____ | Stage _____ | Stratum _____ | PoM _____ |
|------------|-------------|-------------|---------------|-----------|

Summary \_\_\_\_\_

Opened: Dismantled wall because it was severely undercut in the walk

Limits (N) See previous cards for old limits

(S) \_\_\_\_\_

(E) \_\_\_\_\_

(W) L18200

Closed: Removed entire remains of wall.

Matrix: see previous card.

Relations: See previous card

Above: L9025 covers but does not seal the western part of W9051

North: see previous card

South: see previous card

East: see previous

West: L18200 is cut by W9051

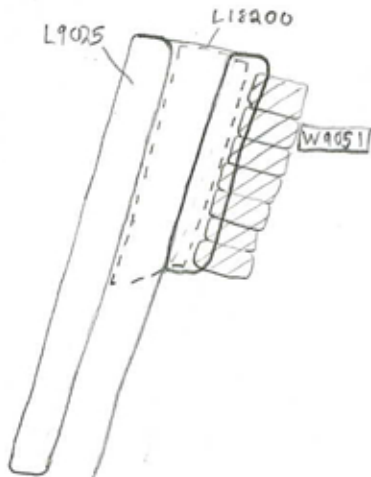
Below: No locs below because of erosion.

Additional Observations/Value: Medium value. Badly damaged wall

Locus

W 9051

# Sketch plan



N

1:100

S

