

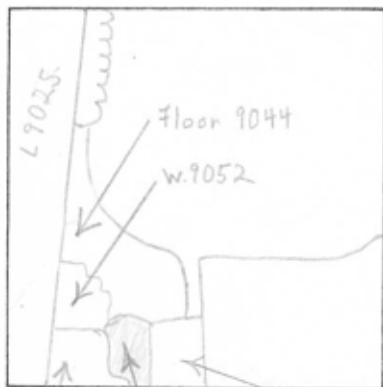
TEL DOR 19 86 field 16 square A.I.3.1 phase (in sq.): LOCUS 49.0.5.7

date opened 05/08/86 level 1.53.4 date closed 07/08/86 level 1.4.8.4 floor level \_\_\_\_\_ type of locus rubble fall

loci above 9.046.5 \_\_\_\_\_ loci below 9.06.1 \_\_\_\_\_ sealed by \_\_\_\_\_

graphic description

final locus no. arch. unit/logical area stage (in sq.) final STRATUM



Floor 9046

L 9057

w. 9047

OPENED: To take out rubble between walls 9047 and 9052.

DEFINITION: To North by floor 9044, to east by w. 9047; to south by baulk, to east by floor 9046 = 9044; to North-west by w. 9052. Consists of field stones and rubble which appear to have fallen there by creating L 9057.

CLOSED: Rubble - fall material removed.

RELATION: Rests on [w. 9047] reaches [w. 9052] and rests upon [9046] and disturbed section of [9046] adjacent to [9047]

(robbed by foundation trench for 9047?).

comes down on rubble floor 9044 = 9046

photos

please check (+ or -) when closing locus:

- reason for opening
- definition/ limits
- reason for closing
- relation to other elements
- working photos, nos: 86.04.30
- publication photos M 70 32.03
- architect's permission YES

