

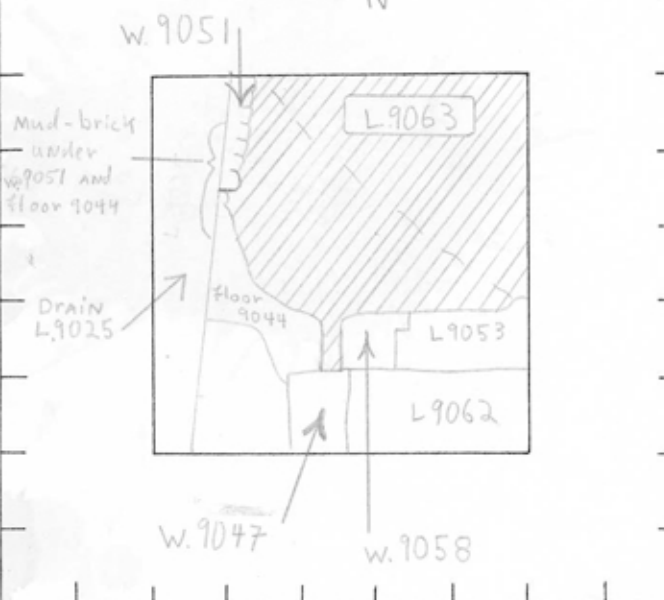
TEL DOR 1986 field G square A.I.3.1 phase (in sq.): LOCUS L9.0.6.3

date opened 08/09/86 level L4.2.0 date closed 11/08/86 level \_\_\_\_\_ floor level \_\_\_\_\_ type of locus fill

loci above 9.0.54, 9.0.55, 9.0.56 loci below \_\_\_\_\_ sealed by \_\_\_\_\_

graphic description

final locus no. \_\_\_\_\_ arch. unit/logical area \_\_\_\_\_ stage (in sq.) \_\_\_\_\_ final STRATUM \_\_\_\_\_



OPENED: When drain, L9054 was removed, Loci L9054, L9055 and L9056 were collapsed into 9063.

DEFINED: To north and east by baulks, to south by fill under L9053 and L9058 and L9047; to south-west by fill under floor 9044, to west by fill under w.9051. Consists of fill and some mud-brick in west, \*And sloping rubble north and below [w.9058].

CLOSED: End of season.

RELATION [9058] floats above [L9063], reaches fill under [w.9058], reaches sloping cobbles north and below [9058]. That floor noted in western section at level with bottom of drain [9054] would have rested on top of [9063].

photos

please check (+ or -) when closing locus:

- reason for opening
- definition/ limits
- reason for closing
- relation to other elements
- working photos, nos:
- publication photos
- architect's permission

COMMENTS: L9063 had looser fill in east and south-east, fill becomes harder with more packed clay-like material along west and north-west edges. West north baulks dark greyish lenses are visible, sloping downwards from s to n. \* Drain 9054 rests on [L9063]

This seems to be above the bricky material beneath drain [9054] and floor associated with it to the south  
[9063] ends or includes a possible pit in the center of the locus, comprised of many stones over

LOCUS L19.0.6.3 BASKET LIST

basket no.				level	str def	cont	R ±	periods	comments
90663	1398	03	01	0	1	2		Ob-02	
90664	1398	03	13					Glass	
90665	1398	03	05					Iron slag	
90666	1398	03	11					Bones	
90672	1412	03	13					Glass	
90688	1409	03	01					Cup + Saucer	
90670	1412	03	01	2	0	6		Chalice <i>Cypriote</i>	

Additional Notes 1991

→ and shards. The