

TEL DOR 19

field

16

square

AJ.3.3

phase (in sq.):

LOCUS W19.016.15

date opened

11/08/86

level

14.03-14.08

date closed

11/08/86

level

13.67-13.57

floor level

type of locus

WALL

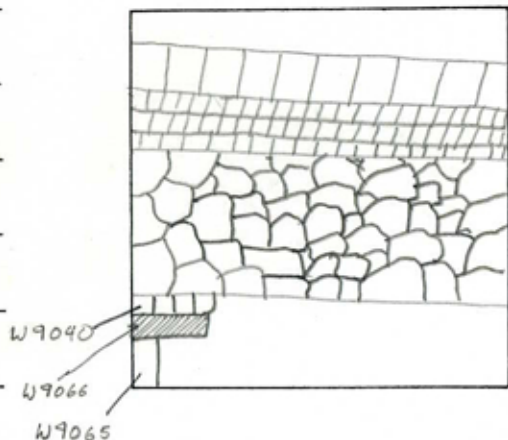
loci above

9.0412

loci below

sealed by

graphic description



final locus no.

arch. unit/logical area

stage (in sq)

final STRATUM

OPENING: STONES DEFINING THE WALL WERE DISCOVERED

DEFINITION LIMITS ON THE NORTH BY THE SOIL UNDER W9040 ON THE WEST BY THE WEST BAVLK AND ON THE SOUTH BY W9065 AND L AND ON THE EAST BY L

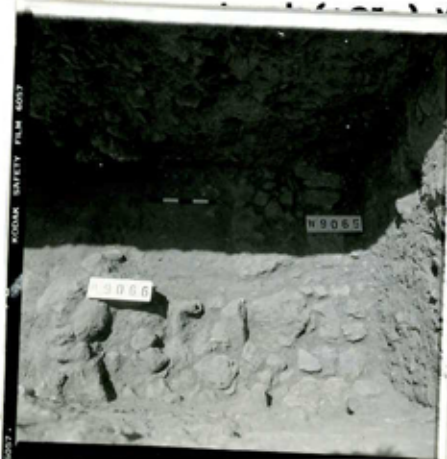
REASON FOR CLOSING: END OF SEASON

RELATION TO OTHER ELEMENTS: ARUTS W9065 AND L9067 REACHES IT.

MATRIX: WALL COMPOSED OF ROUGH FIELDSTONES IN MUD. MUD BRICK MATERIAL ABOVE MAY BE PART OF THE FALLEN UPPER COURSES OF THE WALL

1.80 x 50 CM

photos



when closing locus:

elements

s:

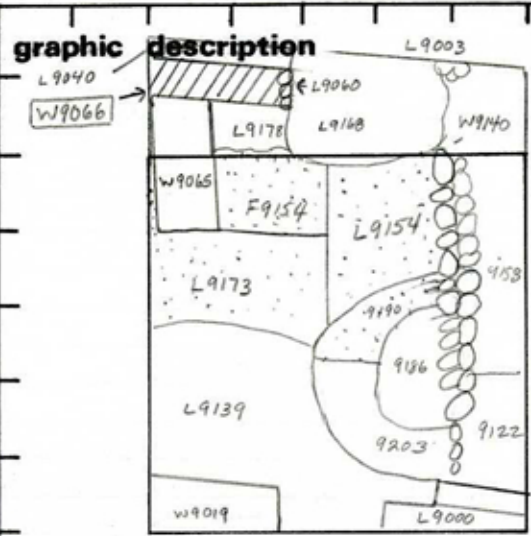
on

1036

WORKING PHOTO 05 1,2

PUBLICATION PHOTO #5 M7035.12

OR	1987	field	6	square	AJ.3.3	LOCUS	W9066
opened	11/08/86	level	1403	date closed	06/08/87	level	
loca above	9042	loca below		sealed by		floor level	
						type of locus	wall



final locus no.	arch. unit / logical area	stage (in sq.)	final STRATUM
-----------------	---------------------------	----------------	---------------

**Summary:**

**Description:** OPENING: stones defining wall were uncovered below L9042 mudbrick material in 1986.

DEF/LIM W9066 is a wall 170 cm by 60 cm. It is limited in the west by the west baulk, on the north by mudbrick soil beneath W9040, by L9178 and W9065 on the south and L9168 on the east.

Closed End of 1987 Season

RELATIONS W9066 abuts but does not clearly dovetail with W9065. W9066 appears to continue into the west baulk and possibly into the mudbrick material below W9040. It is associated with the mud brick material visible in west

section

**photos**

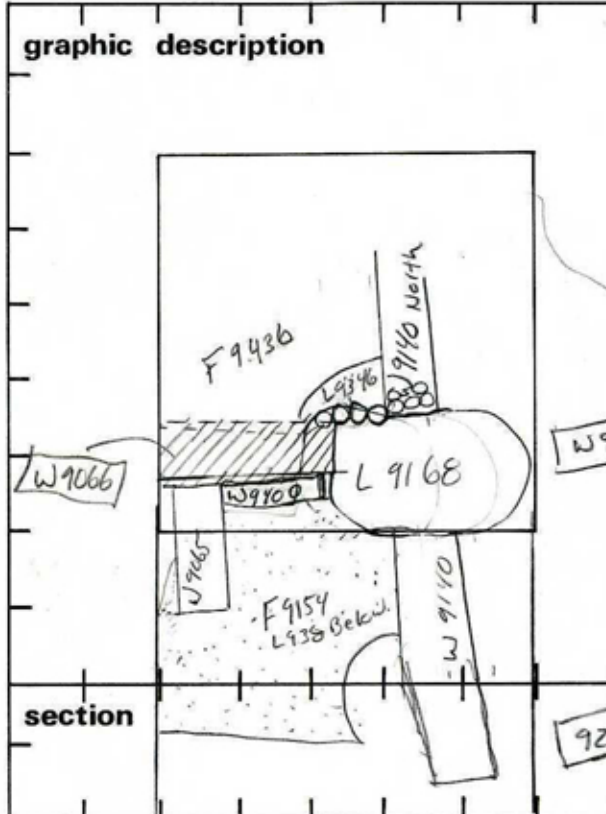
- reason for opening
- definition / limits
- reason for closing
- relation to other elements
- working photos, nos: 34658-34661
- publication photos
- architects permission

written by R. Friedman checked by J. Zorn  
OK

sections at Level max. 14.9.8 The brown mudbrick soil of the northern portion of L9178 reaches W9066. L9168 possibly cuts W9066. Canceled W9060 directly overlies W9066 for 40 cm at east end. The relationship of W9066 to W9060 remains unclear. F9154 did not reach W9066

MATRIX. Small fieldstones in mudbrick soil

OR 19 89 field G square AJ33 phase (in area): LOCUS W 9066 card 3  
 opened level 1403 - date closed level 1379 - floor level type of locus  
 11/08/86 1408 12/08/89 1380 Wall  
 loci above 9346 loci below W9400 sealed by



final locus no. arch. unit / logical area stage (in sq.) final STRATUM  
**Summary:**  
**Description:** SEE CARDS 1 and 2.  
**Relations:** W9066 Abutted By W9065 and continues to East and West. W9066 Sits directly on Remains of Mud Brick Wall L9400. Floor L9436 overlays Northern Edge of wall. W9065 Flats above Floor 9154 and Surfaces L9300. Definitely Cut By L9168 (in the east). W9065 Probably Formed a corner with W9140 North, and Perhaps Phase 2 of W9140, But This area was Robbed out By Pit L9168. There is an actual existing corner (1 stone wide) connecting W9066 to W9140 North. W9066 May have related to Phase II of W9140 south, Phase I of which Associates with Mud Brick walls W9400, 9262, 9295. W9066 is overlaid by L9346 and is Reached by Floor L9436.  
**Reason closed:** End of season, not closed in 1989

**photos**  
 reason for opening  
 definition / limits  
 reason for closing  
 relation to other elements  
 working photos, nos:  
 publication photos  
 architects permission  
 written by R. Lindstrom checked by J. Zorn



Reason closed: End of season, not closed in 1989

Locus W 9066	Dor 19 9.1	Fld G	Sq AK33	Loc. type wall (Cuid?)
Open	Date 8.5/8/9.1	High at 1.4.20 G	Low at 1.3.8.6 E	Seals: _____
Close	8.9/8/9.1	1.4.0.9 G	1.3.8.6 E	Sealed by: _____
Floor: type	_____	_____	_____	Loci L9679 _____
Length 2.3	Width 8.8	Vol _____	_____	above _____
Value 1	Remove 1/1/1	Drawn? YES	_____	below _____
Photo #(1)	_____	Photo #(2)	_____	Loci _____
Written by: J.K.S	Checked by: J.R.Z	_____	_____	below _____

Unit	Phase	Stage	Stratum	PoM
------	-------	-------	---------	-----

Summary

Opened: Came down on wall while excavating [L9679] creating [L9719], [L9720], [L9721], [L9725], and [W9066].

Limits (N) Bounded on the N by [L9719] and [F9679].

(S) Bounded on the S by [L9721] and [L9720].

(E) Bounded on the E by the eastern limit of S0 AK33 (continues into AJ33).

(W) Bounded on the W by [L9725].

Closed: Not closed; end of season

Matrix: Field stone wall roughly faced on two sides with large field stones up to 40cm in length and packed with small field stones (~10cm or less) equal number of large and small stones. Wall make-up included possible stone altar: 4"horned" Cone "horn" Found 1.2m distant in wall makeup), 30cm x 50cm x 30cm, #97028.

Relations: [W9066] in AK33 is covered by [L9679] it is reached by [F9679]. It is also probably reached by [L9721], but this locus was not excavated and the relationship is not clear. [L9725] and [L9720] may cut [W9066] but they were not closed and it is not certain if they cut [W9066] or if the wall simply ends. The relationship of [L9719] is unclear because [L9719] needs to be excavated further, but at present [L9719] appears to reach [W9066]. [W9066] may abut another wall at the perpendicular near its W end but this possible wall exists in [L9719] and needs to be excavated further to determine if it is indeed a wall. [W9066] changes direction approximately 20° to the South from SQA33 at the W end of [W9065]. Stones are placed along the northern side of [W9066] to continue this orientation. These stones of [W9066] are reached by [F9679]. [F9679] ends/is cut? where the stones stop and the true "new" direction of [W9066] in AK33 continues. The altar is W of the floor and in the makeup of the new 20° off direction of [W9066].

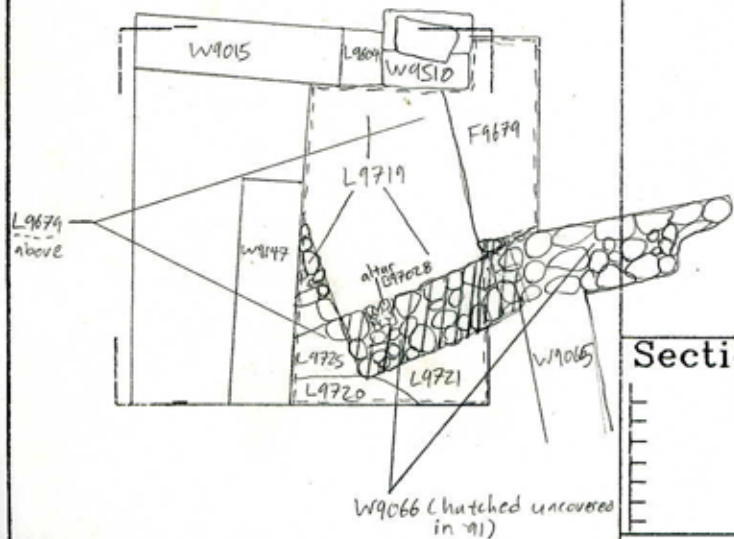
Additional Observations/Value: Iron Age wall reached by Iron Age floor with restoration pottery on floor: High value.

Locus

L 9106:61

Photo # 71-35, 71-316, 71-317, 71-318, 71-319, 71-320

Sketch plan



Photo

Photo

Section

Section

Focus W 19066	Dor 19 913	Fld. 61	Sq AJAJ33	Loc. type Wall (Card 3) anted
Open Date 8/5/87/93	High 14.720	at C	Low 13.810	at E
Close Date 8/4/88/93	13.772	E	13.614	C
Floor: type Length 5.3	Width 2.8	Remove 1/1/1	Vol	Drawn? YES
Photo # (1)	Photo # (2)	Seals: _____	Sealed by: _____	Locl above _____
Written by: JRS	Checked by: JRZ	Locl below _____	_____	_____

Unit	Phase	Stage	Stratum	PoM
Summary				

Opened: See Cards 1 and 2.

Limits (N) See Cards 1 and 2.

(S) See Cards 1 and 2.

(E) See Cards 1 and 2.

(W) See Cards 1 and 2.

Closed: Not closed, end of season.

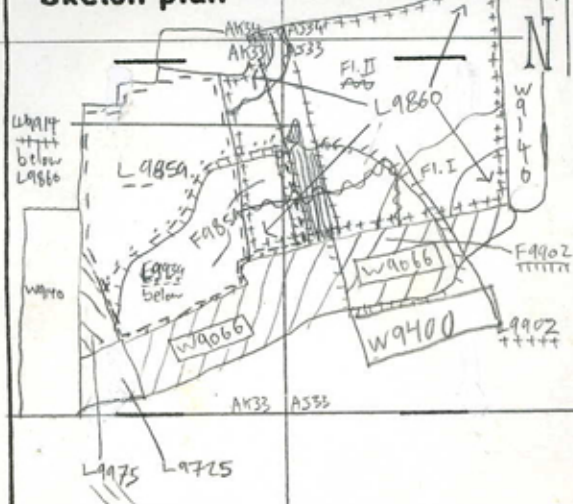
Matrix: See Cards 1 and 2.

**Relations:** W9066 is reached by the horizontal twilight zone of L9859 in SQ AJ33 and by horizontal twilight zone L9860 in SQ AJ33. W9066 is layered upon F9902. W9066 may cut W9914. L9975 may have abutted W9066 but is robbed out by L9725 at this point. Also L9975 needs further exposure to reveal its nature more completely. Both floors I and II of L9860 reach W9066. In order to discern the relationship of L9939 to W9066 further excavation is required, since L9979 (F9859) was not excavated this season. A likely scenario, however is that the material of L9939/F9859 continuing below W9066. Floors I+II of L9860 both reach W9066. L9902 reaches W9066 and W9066 is, as previously stated layered out thick on F9902.  
\* F9902 is seen to reach W9100 S of W9066 and below W9066.

**Additional Observations/Value:** Iron Age Wall reached by Iron Age floors and built directly on earlier Iron Age floors. High Value.

Sketch plan

Scale: 1:100



101016

Section



Section



102303



101017



101017

<b>Locus</b> WJ 9.016.61	<b>Dor</b> 19 <sup>94</sup>	<b>Fld</b> 61	<b>Sq</b> AK1331111	<b>Loc. type</b> Wall (Card 4)
<b>Open</b> 014/07/94	<b>Date</b>	<b>High at</b> 114.113 W	<b>Low at</b> 113.719 C	<b>Seals:</b> W941010
<b>Close</b> 119/07/94		113.718 C	113.619 E	<b>Sealed by:</b>
<b>Floor: type</b>				<b>Loci</b>
<b>Length</b> 2.0	<b>Width</b> 0.9		<b>Vol</b>	<b>above</b>
<b>Value</b> 2id	<b>Remove</b> 119/07/94		<b>Drawn?</b> Y, E, S	<b>Loci</b>
<b>Photo #(1)</b> -		<b>Photo #(2)</b> -		<b>below</b>
<b>Written by:</b> JYS		<b>Checked by:</b> JKRZ		
<b>Unit</b>	<b>Phase</b>	<b>Stage</b>	<b>Stratum</b>	<b>PoM</b>

**Summary**

**Opened:** See Cards 1 and 2.

**Limits (N)** See Cards 1 and 2.

(S) See Cards 1 and 2.

(E) See Cards 1 and 2.

(W) See Cards 1 and 2.

**Closed:** Removed up to West side of W9065 to reveal material below W9066 still exists East of the West side of W9065

**Matrix:** See cards 1 and 2. Although the matrix of W9066 has not changed, the western half of portion of W9066 removed was one course high while the eastern half of the portion removed up to W9065 (and the continuation of W9066 into SA333 E of W9065) extended one course lower than the exposed top course, 2 courses total.

**Relations:** W9066 is reached by the horizontal twilight zone of L18015 to the North. F18015 extends below W9066 as did F1859 (excavated '93 season). W9066 covers L18031, which is partially the mudbrick material on the sole of W9400. To the South W9066 is reached by L18005 and L18008. F18005 probably reached W9066 but this relationship was obscured by erosion. F18008 extends below W9066 to reach W9400, as does F18019 below F18008, although F18019 is significantly lower than F18008 and does not relate to W9066, nor does L18019 relate to W9066. The relationship of W9066 and W9975 is still unclear, but they appear to abutt one another. This relationship is still obscured by the unexcavated Locus L9725.

2003 btm elevations 13.67 (E) - 13.57 (W)

**Additional Observations/Value:** Phase 6 wall reached by floors, covering earlier floors and phase 7 wall. High Value.

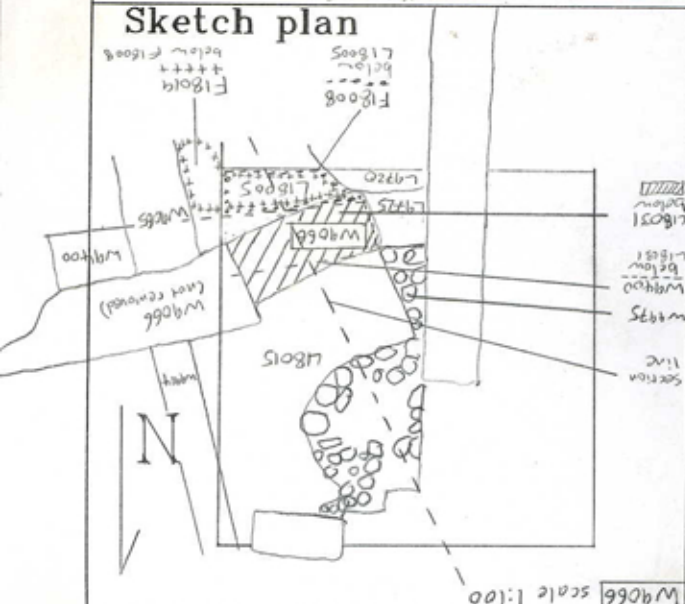


LOCUS

W 9191016

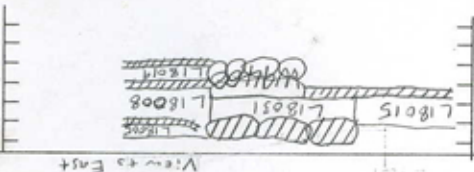
\*Note L1805 =

### Sketch plan



Photo

### Section



### Section



View to East

W9066 scale 1:100