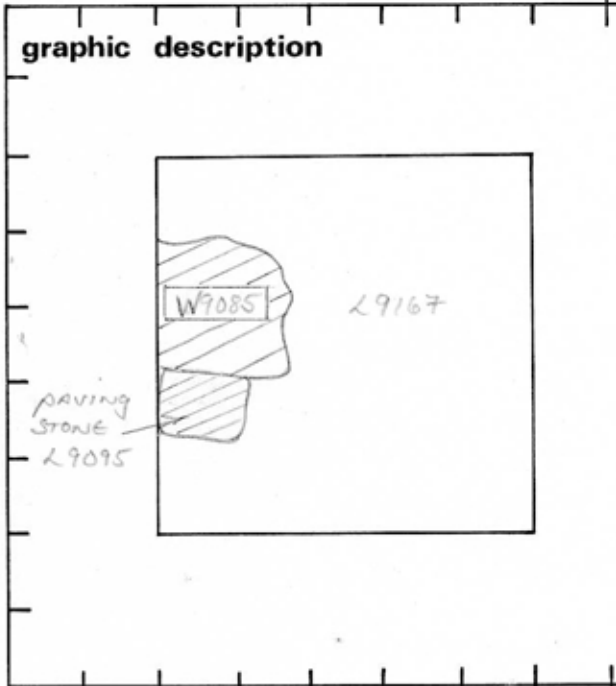


TEL DOR 19 87 field G square AI.34 phase (in area): 1 LOCUS W 9085

date opened 23/07/87 level 1650 date closed 27/07/87 level (not reached) floor level _____ type of locus Wall

loci above L9164 loci below _____ sealed by _____



section

- photos
- reason for opening
 - definition / limits
 - reason for closing
 - relation to other elements
 - working photos, nos:
 - publication photos
 - architects permission
- written by Michael Chase checked by J. Zorn

final locus no.	arch. unit / logical area	stage (in sq.)	final STRATUM
Summary:			
Description: Reasoning for opening: level of foundation course W 9085 was attained via removal of L9167.			
Definition/Limits: Locus 9085 continues E of N bulk from square AI.34 approximately one third distance into AI.34. It is bordered on N, E, and SE edges by L9167 tarmac, but is abutted by squared paving stone S, most likely the sole remainder of pavement L9095 (discovered in square AI.33 & have been part of a street leading into or away from a large open area represented by L9000 pavement (squares AI.31 and 32, AI.31 and 32) - which was of the same phase.			
Reason for closing: Only top level of L9085 was attained before season end. L9167 represents the next distinct excavation around that locus.			
Relation to other elements: Locus 9085 protrudes from N bulk continuing SE to its final extent one third distance into AI.34, where it cuts L9167 and all subsequent layers below L9167 tarmac. Paving stone L9095 reaches abutts L9085 on its S edge, and is reached by L9167, and abutts N bulk. L9085 closing elevation would be its actual limit.			
Matrix: Locus 9085 is a concrete & stone foundation course, and L9095 remainder is a squared limestone paving block.			
Probably cuts L9170			
* See note to L9167			

TEL DOR

19

87

field

6

square

AJ.3.4

phase (in area):

LOCUS

Card 1
W/90.25.

date opened

06/07/87

level

L652

date closed

/ /

level

1584
1321

floor level

type of locus

FOUNDATION WALL

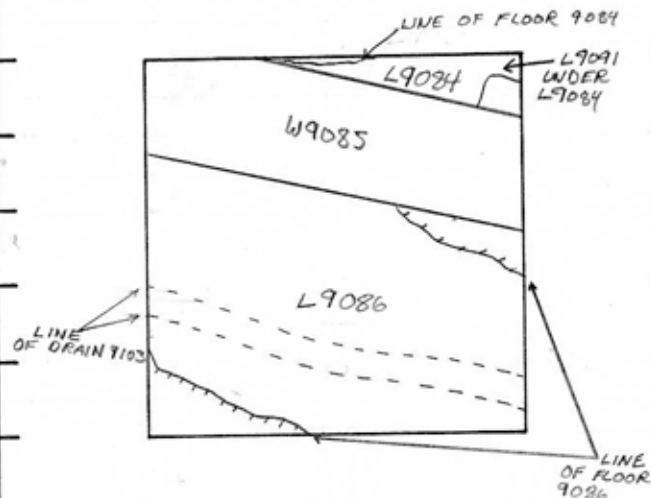
loci above

9076

loci below

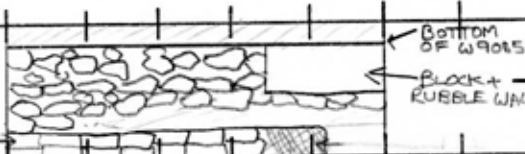
sealed by

graphic description



section

MUD BRICK WALL



photos

- reason for opening
- definition
- reason for closing
- relation to other elements
- work
- publication 34 1-9-9
- archival

written by DENNIS C. STANFILL checked by J. ZORN

OK

final locus no.

arch. unit / logical area

stage (in sq.)

final STRATUM

Summary:

Description:

OPENED: WHEN A LARGE AREA OF SOLID CONCRETE WAS DEFINED SPLITTING TOPSOIL LOCUS [9076] INTO [L9084], [W9085] AND [L9086].

DEFINITION/LIMITS: FOUNDATION WALL RUNNING DIAGONALLY EAST/WEST ACROSS AJ34. BOUNDED ON THE NORTH BY [L9084] AND THE NORTH BAULK, ON THE EAST BY THE EAST BAULK, ON THE WEST BY THE WEST BAULK AND ON THE SOUTH BY [L9086].

MATRIX: HARD CONCRETE WITH ROUGH FIELDSTONES (AVE 30 x 20 x 20 cm)

REASON FOR CLOSING: END OF '87 SEASON. NOT CLOSED.

RELATION TO OTHER ELEMENTS: ON THE NORTH, FLOOR [9084] PROBABLY REACHED [W9085] 15 CMs LOWER [FLOOR 9091] DEFINITELY REACHED [L9085]. THESE MAY REPRESENT DIFFERENT LEVELS OF SUB-FLOORING FOR THE ORIGINAL FLOOR OF [9085] WHICH WAS PROBABLY

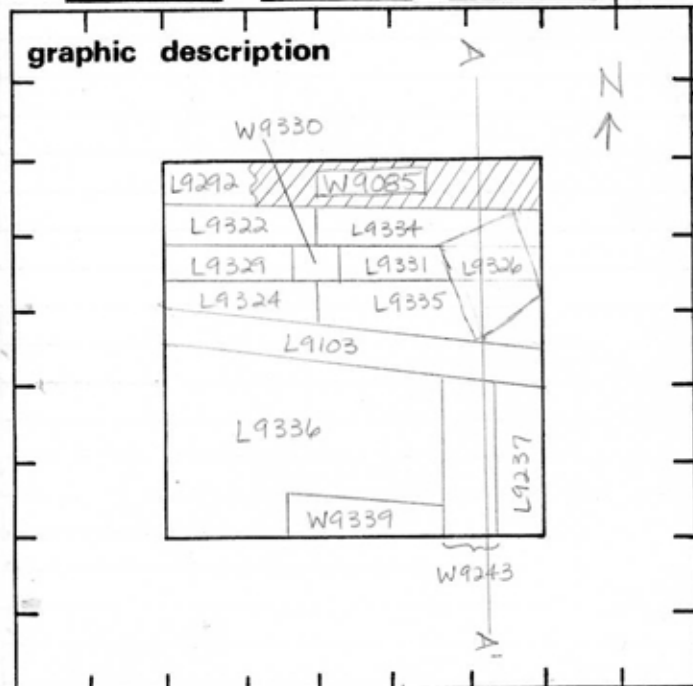
CUT STONE (1 STONE FOUND IN SITU IN AJ 34). [W9085] CUTS [L9121], [L9124] AND [L9126]. IT IS POURED ON TOP AND AROUND [L9125]. ON THE SOUTH, FLOOR [9086] REACHES [W9085] (THIS FLOOR, OR SUB FLOOR, LIES DRAIN [9103] WHICH IS PROBABLY CONTEMPORARY. [W9085] CUTS [L9094], [L9102] AND 2 CMs OF [L9127]. IT DOES NOT FLOAT, BUT RESTS ON TOP OF AN EARLIER WALL OF "BLOCK AND RUBBLE" CONSTRUCTION. THIS EARLIER WALL FLOATS ON A 45 CM LAYER OF [L9160]. UNDER THIS LAYER OF [L9160] IS THE FACE OF A MUD BRICK WALL. SEE SECTION)

Carcl in AK34

TEL DOR 1988 field G square AK34 phase (in area): LOCUS W19.0.85

date opened 11/27/88 level L6.63 date closed 12/28/88 level L6.10 floor level _____ type of locus Wall

loci above L9.2.2.1 loci below _____ sealed by _____



final locus no.	arch. unit / logical area	stage (in sq.)	final STRATUM

Summary:

Description: [Reason for Opening]: Excavation in Square AK34 revealed presence of [W9085].

[Definition/Limits]: [W9085] extends in an E-W line across AK34, and remains partially contained within the N baulk.

[Reason for Closing]: End of Season - Not Closed

[Relation to Other Elements]: [W9085] lies immediately below [L9221]. To the S, [W9085] cuts [L9292], [L9303], [L9322], & [L9334]. [W9085] continues in adjoining squares AJ34 (to the E), & AL34 & AM34 to the W.

Note: A portion of [W9085] appears to have been robbed out in the NW corner of Square AK34

photos

elements
nos: 41040, 41047, 41310

architects permission

written by A. Capel checked by J. Zorn

[Matrix]: Cement and rubble foundation poured into a trench, ca. m wide

TEL DOR

1933

field

G

square

Am35

phase (in area):

LOCUS

card 4

W19085

date opened

19/07/88

level

16.51
16.62

date closed

___/___/___

level

floor level

type of locus

FOUNDATION WALL

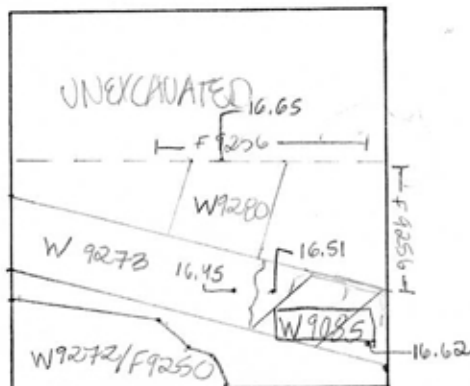
loci above

29256

loci below

sealed by

graphic description



section

photos

- reason for opening
- definition / limits
- reason for closing
- relation to other elements
- working photos, nos:
- publication photos
- architects permission

written by W. Swansonchecked by J. Zorn

final locus no.

arch. unit / logical area

stage (in sq.)

final STRATUM

Summary:

Description:

REASON FOR OPENING / UNECAVATED BUT UNECAVATED.

DEFINITION / LIMITS: ENTERS SQUARE, FROM SOUTH-EAST CORNER RUNNING WEST. BOUNDED ONE BY BAULK, CONTINUED FROM SQUARE A134 BOUNDED BY ABUTTING W9273 ON WEST, AND TWO UNECAVATED UNNUMBERED FILLS BELOW LEVEL OF PAVEMENT W9272. W9085 EXTENDS 1.8M FROM BAULK AND IS ca 1m IN WIDTH.

MATRIX / HARD CONCRETE WITH RIDGES INDICATING ASHLARS OF ABOUT 30x20cm WERE SET IN IT.

ASHLARS 30x20x20 WERE FOUND ON IT IN SQ A134.

REASON FOR CLOSING / END OF SEASON, NOT CLOSED

RELATION TO OTHER ELEMENTS / ABUTS IN 9273 TO THE WEST, REACHED BY FLOOR 9256 TO THE NORTH.

FLOOR 9256 IS HIGHER IN ELEVATION THAN W9085 (16.65m) BUT DOES NOT COVER W9085. THERE IS PROBABLY A RELATIONSHIP BETWEEN THE PASTER SUBFLOOR AND THE WALL. W9085 APPEARS TO BE A FOUNDATION POURED BY THE ROMANS TO EXTEND THE PRE-EXISTING WALL W9273. W END OF W9085 ON SAME LINE AS E. FACE OF W9280 / JOINING OF W9280 AND W9273 HERE.

TEL DOR

1988.

field

G

square

AL34/AL35

phase (in area):

CARD 3
LOCUS W19085

date opened

11/07/85

level

16.63

date closed

level

floor level

type of locus

WALL

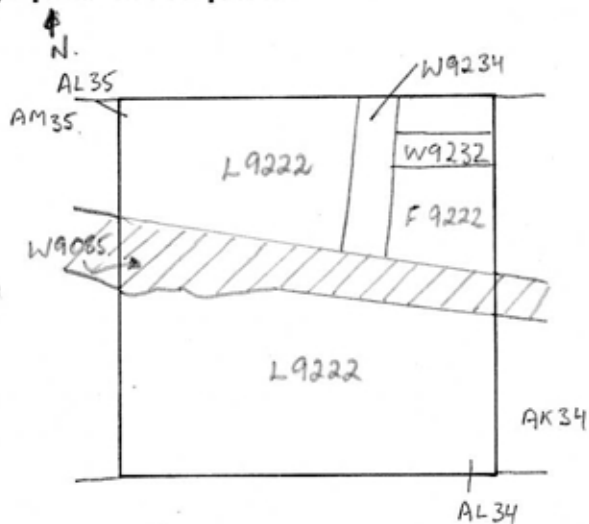
loci above

9222

loci below

sealed by

graphic description



section

photos

- reason for opening
 definition / limits
 reason for closing
 relation to other elements
 working photos, nos:
 publication photos
 architects permission

written by J.M.C.

checked by J. Zorn

final locus no.

arch. unit / logical area

stage (in sq.)

final STRATUM

Summary:

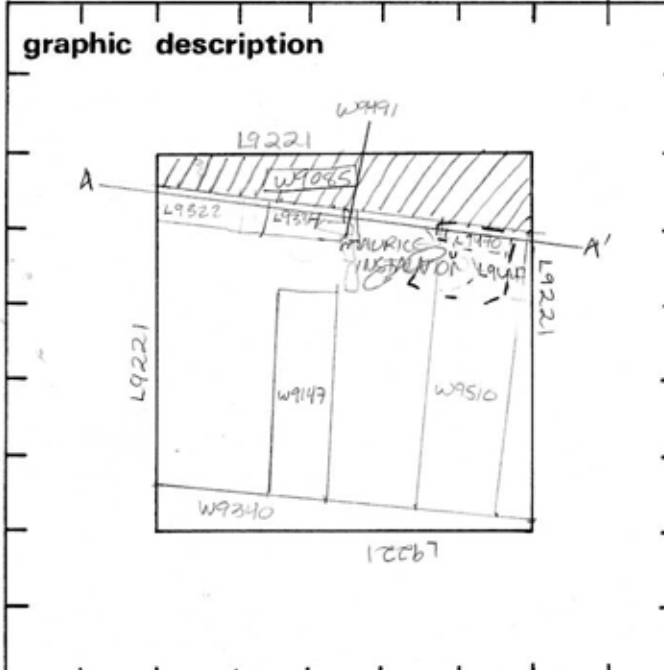
Description:

OPEN: CAME DOWN ON (W9085)
 MATRIX: HARD CONCRETE WITH ROUGH FIELDSTONES.
 LIMITS: BORDERED TO THE NORTH BY (L9222) AND WALL (9234),
 TO THE SOUTH BY (L9222) AND CONTINUING INTO AK34
 TO THE EAST AND AM35 TO THE WEST.
 CLOSING: END OF SEASON; NOT CLOSED.
 RELATIONS: (W9085) RUNS EAST/WEST ACROSS THE ENTIRE SQUARE
 INTO THE ADJOINING SQUARES, AK34 AND AM35. IT
 CUTS W9234, WHILE L9222 COVERED THE WALL
 AND DEFINES IT ON ITS NORTH AND SOUTH FACES.
 1/2 DOZEN LARGE KURKAR BLOCKS SIT ON THE SOUTH
 WESTERN EDGE OF (9085) AND ARE TENTATIVELY

IDENTIFIED AS A SUPERSTRUCTURE WHICH SAT
 ASTRIDE THE WALL. (L9222) IS ALSO
 CUT BY (W9085).

(W9085) CUTS THE UNNUMBERED FILLS TO ITS NORTH
 AND SOUTH WHICH ARE BELOW (L9222)

TEL DOR 19 89 field G square A.K.3.4 phase (in area): Card 2 in AK34
 date opened 11/07/88 level 1663 date closed 11/08/89 level 1597 floor level _____ type of locus WALL
 loci above L9221 loci below NONE YET sealed by _____



section
 SEE BACK

photos

- reason for opening
- definition / limits
- reason for closing
- relation to other elements
- working photos, nos:
- publication photos
- architects permission

written by W. Swanson checked by J. Zorn

final locus no.	arch. unit / logical area	stage (in sq.)	final STRATUM
Summary:			
Description:			
REASON FOR OPENING: SEE PREVIOUS CARD			
DEFINITION/LIMITS: SEE PREVIOUS CARD			
REASON FOR CLOSING: END OF SEASON - NOT CLOSED			
MATRIX: CEMENT AND RUBBLE FOUNDATION POURED INTO TRENCH ca. 1m WIDE			
RELATIONS: SEE PREVIOUS CARD. [W945] CUTS [L9322], [L9334], [L9447] & [L9470] TO SOUTH, FLOATS ABOVE [W949] (MAURICE INSTALLATION). BUILT ON TOP OF [W951], [L9524], [L9541], [L9534], [L950] APPEAR TO EXTEND UNDER [W945] PEDESTAL (MAURICE INSTALLATION MATERIAL & BELOW), ALSO [L9467], [L9469], [L9487]			
NOTE: ROBBED OUT (OR ERODED ON W.)			

Locus WJ 9085	Dor 19 92	Fld G	Sq A 34	Loc. type WALL (CONTINUATION)
Open 13/27/92	High at 16.50	Low at 15.94	Seals: _____	
Close 24/27/92	at N	at E	Sealed by: _____	
Floor: type _____	Width _____	Vol _____	Locl _____	
Length _____	Remove _____	Drawn? _____	above _____	
Value _____			below _____	
Photo # (1) _____	Photo # (2) _____			
Written by: S.F.B	Checked by: J.R.Z			

Unil _____	Phase _____	Stage _____	Stratum _____	PoM _____
-------------------	--------------------	--------------------	----------------------	------------------

Summary _____

Opened: CONTINUED DOWN ON NORTH SIDE OF W9085 IN 1992 SEASON

- Limits (N)** L9750 (ELEV. 15.78-15.58) L9752 (ELEV. 15.68-15.14)
- (S) PREVIOUSLY EXCAVATED
 - (E) PREVIOUSLY EXCAVATED
 - (W) CONTINUES INTO SQUARE AJ 34

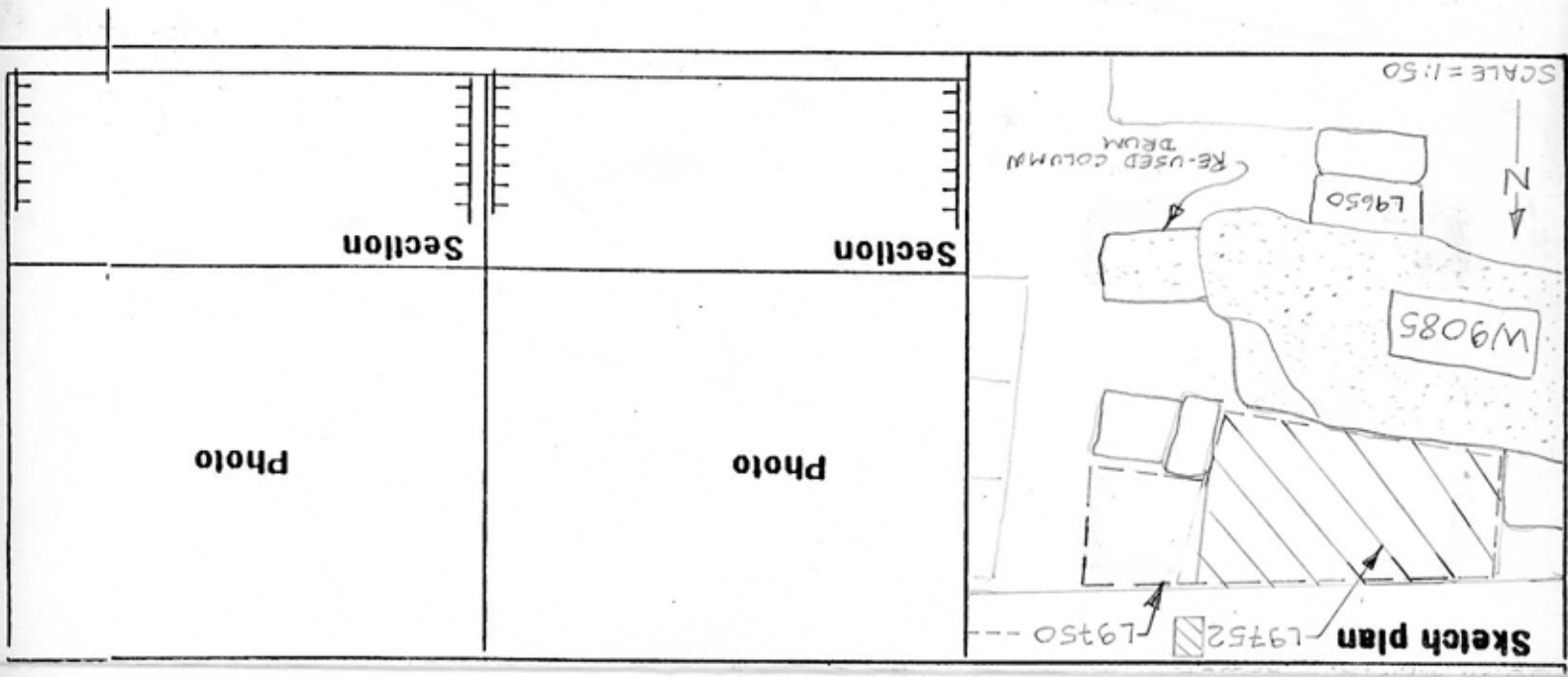
Closed: CLOSED W9085 WHEN L9752 REACHED LEVEL OF BOTTOM OF "B" (FIELD STONE) PHASE ON NORTH SIDE OF WALL. End of Season - Not removed.

Matrix: W9085 IS CONCRETE FILLED WITH STONE RUBBLE IN ITS UPPER "A" PHASE FROM ELEVATION 16.50 TO APPROX. 15.80 (W) - 15.55 (E). IN ITS LOWER "B" PHASE (OR FOUNDATION FILL) IT IS COMPOSED OF FIELD STONES VARYING FROM ABOUT 50 CM TO 20 CM ACROSS. BOTTOM ELEVATION OF "B" PHASE IS APPROX. 15.20

Relations: DURING 1992, EXCAVATED (2) LOCI ON NORTH SIDE OF WALL WHICH REVEALED "B" PHASE ON THAT SIDE. BOTH L9750 & L9752 WERE CUT BY "B" PHASE OF W9085

Note: 1594 opening low is on column drum and is taken from separations.

Additional Observations/Value: ALTHOUGH ALL IDENTIFIED AS PART OF W9085, REUSED COLUMN DRUM AT EAST END OF WALL SITS ON ASHLAR FOUNDATION AND HAS A _____



Locus W 9085	Dor 19 9,3	Fld G ₁	Sq A,1,3,4	Loc. type Wall (Baby Block)
Open	Date 02/07/93	High at 16.5p G	Low at 15.94 F ₁	Seals: _____
Close	05/07/93	15.29 N ₁	14.96 F ₁	Sealed by: _____
Floor: type	_____	_____	_____	Locl _____
Length	1.7	Width 0.9	Vol _____	above _____
Value	_____	Remove _____	Drawn? YES	below _____
Photo #(1)	100690	Photo #(2)	100691	Locl _____
Written by:	RSS	Checked by:	JRZ	below _____

Unit	Phase	Stage	Stratum	PoM
------	-------	-------	---------	-----

Summary

Opened: When W9650 was removed from along S. face of W9085.

Limits (N) See previous season cards

(S) W9650

(E) See previous season cards

(W) See previous season cards

Closed: End of season - Not closed.

Matrix: See previous season cards

Relations: For all previous relations see previous season cards.

W9085 appears to cut the Persian period pie/pedestal W9650.

Note: It is possible that W9650 originally related to the 2nd from the top (non-recent) phase of W9085. Possibly W9650 abutted that lower phase of W9085. It would then roughly parallel the W9147 + W9510 to the West. (Pia's and Wendy's walls).

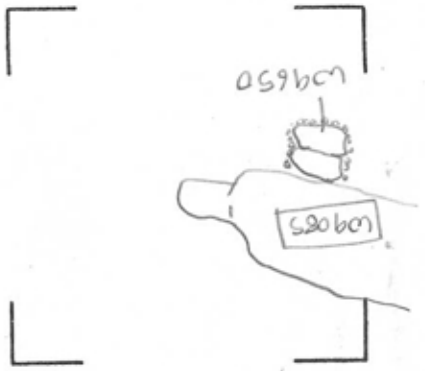
Additional photos: 100692 to 100695.

Additional Observations/Value: High value: big wall.

Section

Section

Photo



↔

Sketch plan 100695 1:100

Locus WJ 9085	Dor 19 9.1	Fld G	Sq A134	Loc. type Wall
Open Date 0.4/07/91	High at 1.6.5.0 SW	Low at 1.6.5.0 SW	Seals: _____	
Close Date 0.8/08/91	_____	_____	Sealed by: _____	
Floor: type _____	_____	_____	Loci _____	
Length L. 7	Width 0.9	Vol _____	above _____	
Value 14	Remove 1/1/1	Drawn? Y/E/S	below _____	
Photo #(1) _____	Photo #(2) _____		Loci _____	
Written by: KAIL	Checked by: JRZ		below _____	

Unit _____	Phase _____	Stage _____	Stratum _____	PoM _____
------------	-------------	-------------	---------------	-----------

Summary _____

Opened: Was main feature of A134 at beginning of season. Opened in 1987.

Limits (N) 9205

(S) 9198, 9613, 9649, 9680

(E) 9205, 9615, 9696

(W) wall continues through northern A134

Closed: End of season. Unchanged. Not closed

Matrix: W9085 was the largest feature of A134. It is a solid and sturdy wall composed of courses of large stones, possibly reused from other structures. The stones are held together with tough cement and the stones range in size from fist sized cobbles to column drums/ashlars.

Relations: W9085 may possibly be the SE corner of a foundation for a large civic structure. L9205, L9696 and the western half of L9615 may have robbed the eastern wall which would have made a corner with W9085. The two ashlar in L9696 appear parallel and only more excavation east and north of W9085 can examine this foundation wall theory. The locus north of W9085 was not excavated in '91. West W9085 continues through A134 and forms the northern boundary for Area G. Pit 9198, 9613, 9649, 9680 at the south reaches W9085. No part of W9085 was removed during the '91 season.

L9632 (a paving stone/pediment for a statue) and L9650 (Foundation courses for L9632?) probably reach W9085. (JRZ)

Additional Observations/Value: Major feature, cuts everything around it.

(17)

LOCUS

W 9.0.8.51

Sketch plan



Sec