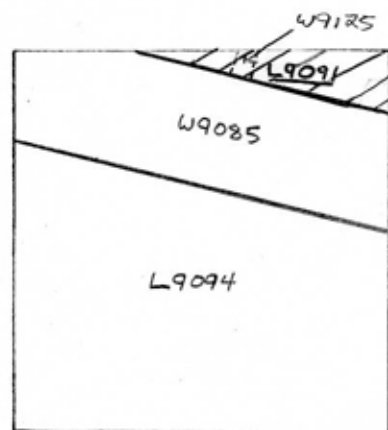


TEL DOR 1987 field 16 square A.J. 3,4 STRATUM LOCUS 49,091

date opened 08/07/87 level 16,418 date closed 08/07/87 level 16,313 floor level 16,313-16,313 type of locus FLOOR MAKEUP OF 9084 AND FILL TO FLOOR 9091

loci above 91084, loci below 9121, sealed by

graphic description



final locus no. arch. unit

description:

OPENED: TO EXCAVATE BELOW FLOOR 9084DEFINITION/LIMITS: SECTION NORTH OF W9085 WHICH REACHES NORTH AND EAST Baulks.MATRIX: FILL OVER FLOOR 9091 CONSISTED OF A FAIRLY EVEN LAYER OF 10-15 CM. ROUND STONES IN A SANDY SOIL WITH FEW SHEPDS + SHELLS. FLOOR 9091 WAS A WELL PRESERVED LAYER OF POUNDED KURKAR PEBBLES.REASON FOR CLOSING: REACHED FLOOR 9091RELATION TO OTHER ELEMENTS: FLOOR 9091 REACHES W9085 ALONG ITS ENTIRE NORTH SIDE. THE CONNECTION WAS VERY DISTINCT. THIS FLOOR PROBABLY REPRESENTS A LEVEL OF SUB FLOOR FOR THE ORIGINAL FLOOR OF W9085 WHICH WAS PROBABLY CUT STONE. THE LEVEL OF FLOOR 9091 CORRESPONDS TO THAT OF FLOOR 9086 ON THE SOUTH OF W9085. IT SEEMS LIKELY THAT THESE FLOORS WERE IN USE AT THE SAME TIME. IT IS ALSO POSSIBLE THAT THIS FLOOR WAS IN USE WITH WALL 9125 WHICH IS AT ROUGHLY THE SAME LEVEL, ALTHOUGH NO CONNECTION WAS PRESERVED.

PHOTO # 873503.29

AFTERNOTE: THE DISCOVERY OF A PAVING STONE ON THE SOUTH OF 9085 IN AJ 34 ADDS WEIGHT TO THE HYPOTHESIS THAT 9091 AND 9086 ARE SUB-FLOOR LAYERS.

photos # 873503.29

DENNIS, C. STANFILL

