

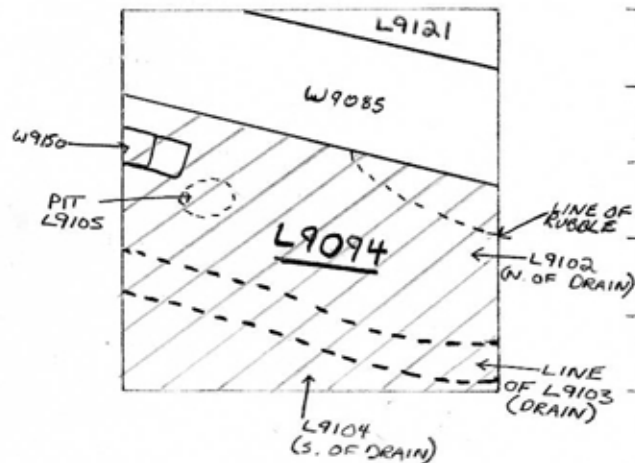
TEL DOR 19 87 field 16 square A.J.3.4 STRATUM \_\_\_\_\_ LOCUS L9,0,9,4  
 date opened 08/07/87 level 16,3,5 date closed 09/07/87 level 16,0,9 floor level \_\_\_\_\_ type of locus \_\_\_\_\_  
 loci above 9,0,8,6, \_\_\_\_\_ loci below 9,1,0,2, 9,1,0,3 sealed by \_\_\_\_\_  
 9,1,0,4, 9,1,5,0, 9,1,0,5, \_\_\_\_\_

graphic description

final locus no. \_\_\_\_\_

arch. unit \_\_\_\_\_

description:



OPENED: WHEN REMOVING FLOOR MAKEUP OF FLOOR [9086].

DEFINITION/LIMITS: AREA SOUTH OF W9085 REACHING WEST, EAST AND SOUTH Baulks.

MATRIX FLOOR MAKEUP CONSISTED OF A LAYER OF ROUNDED KURKAR WITH A FAIR AMOUNT OF BONE. IMMEDIATELY UNDER THE FLOOR LARGE AMOUNTS OF POTTERY IN SANDY FILL SIMILAR TO MATERIAL IN [L9102] AND [9104] BELOW.

SOUTH OF [W9085], PRIMARILY ON THE EAST SIDE, LARGE AMOUNTS OF RUBBLE STONES (AVG. 20x20x20 CMS) WERE FOUND.

REASON FOR CLOSING: [L9094] CLOSED UPON DEFINITION OF [L9103 (DRAIN)]. [L9094] SPLIT INTO [L9102 (N. OF DRAIN)], [L9105 (PIT IN 9102)], [L9103] AND [L9104] (S. OF DRAIN).

RELATION TO OTHER ELEMENTS: [L9094] IS CUT BY [W9085]. [L9094] COVERED

BOTH [L9102] (DRAIN) AND [W9150]. IT ALSO COVERED PIT [9105] AND THERE COULD BE CONTAMINATION OF THE ARTIFACTS FROM THIS LOCUS WITH LATER MATERIAL DUE TO FAILURE TO RECOGNIZE THE PIT FROM ITS START.

JZ '89: also covers [L9104].

photos

DENNIS C. STANFILL *DK*

LOCUS L19.0.9.4 BASKET LIST

basket no.	level	str def	cont	R +	periods			comments
90873	1613	1009			09			LEAD WEIGHTS
90876	1613	1001	1		06	05	03	
90879	1613	1011						BONES
90880	1613	1009						LEAD WEIGHTS
90882	1613	1013						GLASS
90884	1613	1004						BRONZE NAIL
90891	1609	0301	1		12			LATEST (02) KEPT
90892	1609	0311						BONES
90896	1609	0313						GLASS
90903	1609	0309						BRONZE NAIL