

TEL DOR

19 87

field

E

square

AI 33

phase (in area):

LOCUS L 9097

date opened

09/07/87

level

L 621

date closed

06/08/87

level

L 548

floor level

type of locus

FILL

loci above

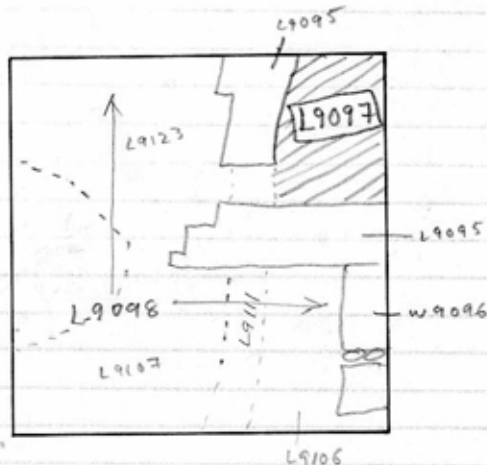
9077

loci below

9297

sealed by

graphic description



final locus no.

arch. unit / logical area

stage (in sq.)

final STRATUM

Summary:

Description:

OPENED: TOPSOIL [L9077] SPLIT INTO [L9095] [W9096] [L9097] AND [L9098] WHEN TOP OF PAVING STONES [L9095] AND [W9096] UNCOVERED.

DEFINITION/LIMITS: CLAY FILL BETWEEN NORTH BAWLK, EAST BAWLK AND PAVING STONES [L9095].

MATRIX: HARD, BROWN CLAY WITH KURKAR BITS, SHELL, SHERDS AND STONES.

REASON FOR CLOSING: STOPPED DIGGING WHEN SANDY SOIL BEGAN TO APPEAR, CLOSED AT END OF SEASON.

RELATION TO OTHER ELEMENTS: WAS BELOW TOPSOIL [L9077], REACHES PAVING STONES [L9095], IS CUT BY DRAIN [L9111]. [L9097] MAY BE FILL WHERE PAVEMENT WAS

ROBBED AND FILL BELOW MISSING PAVING STONES. IS

OF A SIMILAR MATRIX TO [L9106] [L9107] AND [L9123] WHICH ^{are also} FILL BELOW ROBBED STONES.

section

photos

- reason for opening
- definition / limits
- reason for closing
- relation to other elements
- working photos, nos:
- publication photos
- architects permission

written by ALLEN ESTER

checked by J. Zorn

