

TEL DOR

19

87

field

G

square

A.J.3.4

phase (in area):

LOCUS

49.1.24

date opened

4/07/87

level

6.09  
161.3

date closed

30/07/87

level

15.60

floor level

type of locus

STRATIFIED ACCUMULATION

loci above

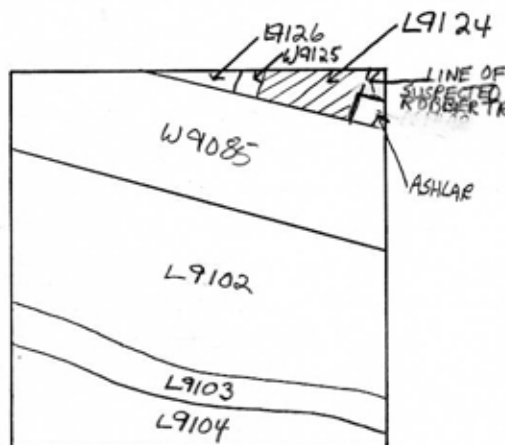
9.1.2.1

loci below

sealed by

9.0.9.1

graphic description



final locus no.

arch. unit / logical area

stage (in sq.)

final STRATUM

Summary:

Description:

OPENED UPON DISCOVERY OF [W9125] DIVIDING [L9121] (AREA NORTH OF [W9085] INTO [L9124], [W9125] AND [L9124])

DEFINITION/LIMITS: AREA NORTH OF [W9085]. DEFINED ON THE WEST BY [W9125] AND THE MATERIAL BENEATH IT AND ON THE EAST BY A LARGE ASHLAR CEMENTED INTO [W9085] AND A SMALL SECTION OF SUSPECTED ROBBERS TRENCH.

MATRIX: HARD RED CLAY SOIL, FEW SHERDS AND TESSERAE, MUCH DIFFERENT FROM THE SOFT GREY SANDY FILL IN [L9102] TO THE SOUTH OF 9085

section

REASON FOR CLOSING: END OF 87 SEASON, NOT CLOSED.

RELATION TO OTHER ELEMENTS: [L9124] REACHES W9125 FOR 5 CMS

photos

- reason for opening
- definition / limits
- reason for closing
- relation to other elements
- working photos, nos:
- publication photos
- architects permission

AT WHICH POINT [W9125] FLOATS ABOVE IT. [L9124] REACHES THE SINGLE ASHLAR UNTIL 16.01 WHEN THE ASHLAR FLOATS ABOVE IT. [L9124] REACHES (IS CUT BY?) THE SMALL SEGMENT OF SUSPECTED ROBBERS TRENCH MATERIAL IN THE NE CORNER. [L9124] IS CUT BY [W9085] UNTIL 15.70 AT WHICH POINT [W9085] FLOATS.

written by DENNIS G. STANFILL checked by J Zorn

