

TEL DOR

19

87

field

6

square

AJ34

phase (in area):

LOCUS L9126

date opened

14/07/87

level

L6.2.1

date closed

30/07/87

level

L6.0.8

floor level

type of locus

STRATIFIED ACCUMULATION

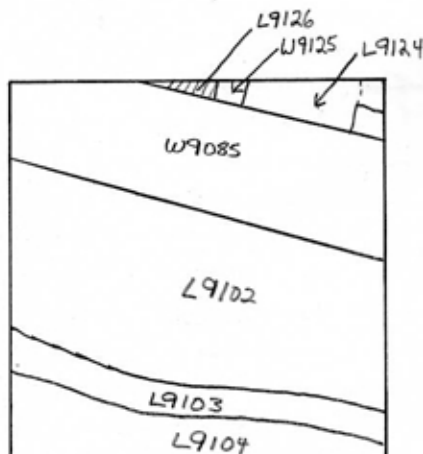
loci above

9.1.2.1

loci below

sealed by

graphic description



final locus no.

arch. unit / logical area

stage (in sq.)

final STRATUM

Summary:

Description:

OPENED: UPON DEFINITION OF W9125 WHICH SPLIT L9121 (AREA NORTH OF W9085) INTO L9126, W9125 AND L9124

DEFINITION/LIMITS: SMALL TRIANGULAR AREA REACHING NORTH BULK, THE NORTH FACE OF W9085 AND THE WEST FACE OF W9125

MATRIX: VERY LITTLE MATERIAL REMOVED DUE TO THE AWKWARD POSITION OF THIS LOCUS. SOIL BROWN AND QUITE FIRM. SIMILAR TO MATERIAL IN W9124 MUCH HARDER THAN SOIL IN W9102.

REASON FOR CLOSING: END OF 87 SEASON

RELATION TO OTHER ELEMENTS: MATERIAL IN W9126 DEFINITELY CUT BY W9085 AND PROBABLY CUT BY W9125.

section

photos

- reason for opening
- definition / limits
- reason for closing
- relation to other elements
- working photos, nos:
- publication photos
- architects permission

written by DENNIS G. STANFILL checked by JZora

