

TEL DOR

1987

field

G

square

AJ.3.2

phase (in area):

6

LOCUS 2/9/31

date opened

15/07/87

level

14.45

date closed

21/07/87

level

14.27

floor level

type of locus

mudbrcky fall

loci above

9.1.13.

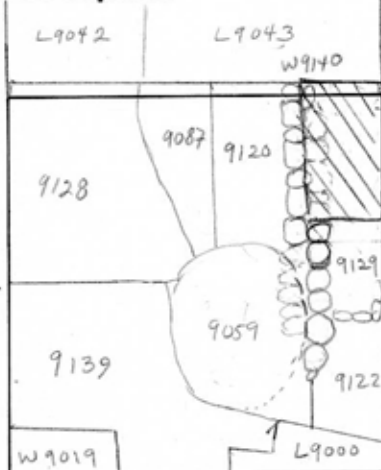
9.0.89

loci below

9.1.58

sealed by

graphic description



final locus no.

arch. unit / logical area

stage (in sq.)

final STRATUM

Summary:

Description:

[L9131] was opened to excavate below [L9113] and [L9089] after Persian material removed.

DEF/LIM [L9131] is mudbrcky fall and hard mudbrcky material. It is limited by the east bank, it is cut by [L9043], it is limited on the south by [L9129]. To the west is the western row of stones of [W9140], the upper course.

Closing [L9131] came down upon second course of [W9140], eastern <sup>row of</sup> stones.

Relations [L9131] is related to the mudbrcky material in southeast corner of AJ33 [L9043] which visibly slopes down to [L9131] in eastern bank. It maybe fall from [W9140]. [L9131] reaches the western upper course of [W9140], but overlies the eastern second course. <sup>The</sup> Upper course on

section

photos

- reason for opening
- definition / limits
- reason for closing
- relation to other elements
- working photos, nos:
- publication photos
- architects permission

written by R. Friedman checked by J. Zurn  
OK

East side may have been robbed out, but no evidence of further Persian disturbance in [L9131].

[L9131] reaches [L9129] more mudbrcky material. [L9131] also reaches the upper course eastern row of stones of [W9140] to south.

Matrix: Hard mudbrcky material with many rocks and rubble.

