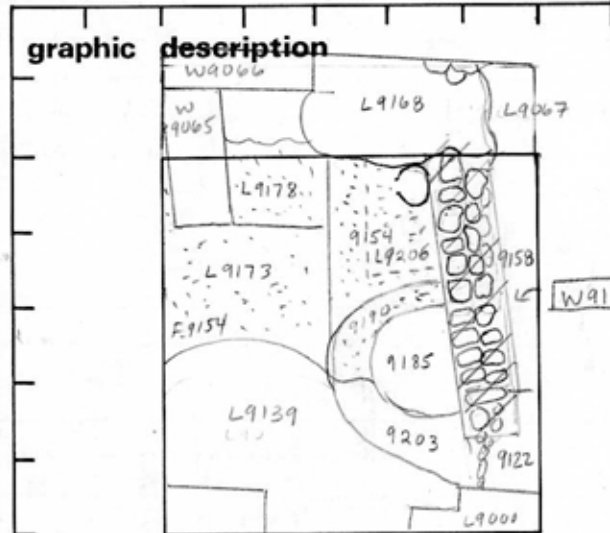


TEL DOR 19 87 field G square AJ3.2 phase (in area): 6+7 LOCUS W9140^{card 1}
 date opened 16/07/87 level 14.52-14.16 date closed 06/08/87 level _____ floor level _____ type of locus wall
 loci above 9081 East B. 9131 loci below _____ sealed by _____
9153 9059 9129



final locus no.	arch. unit / logical area	stage (in sq.)	final STRATUM

Summary:

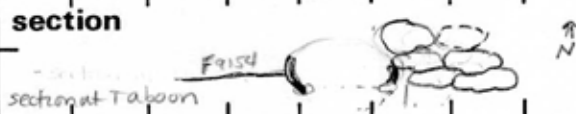
Description:

OPENED W9140 was opened when stores of a wall were discovered below surface L9081 East B.

DEF/LIM W9140 is a field stone wall, 2 rows wide, and at least 3 courses deep. It is approx 3.60 m long N-s. It is bounded on the east by L9158 and L9122. It is bounded on the west by L9120 and L9154 below L9166 below which was L9190 and L9185. It is bounded on the north by L9168. It is possibly bounded on the south by L9203, but rubble there may be a continuation to the pedestal supporting L9000.

Closed. End of 1987 season.

RELATIONS W9140 is cut by pit L9168. Its continuation north



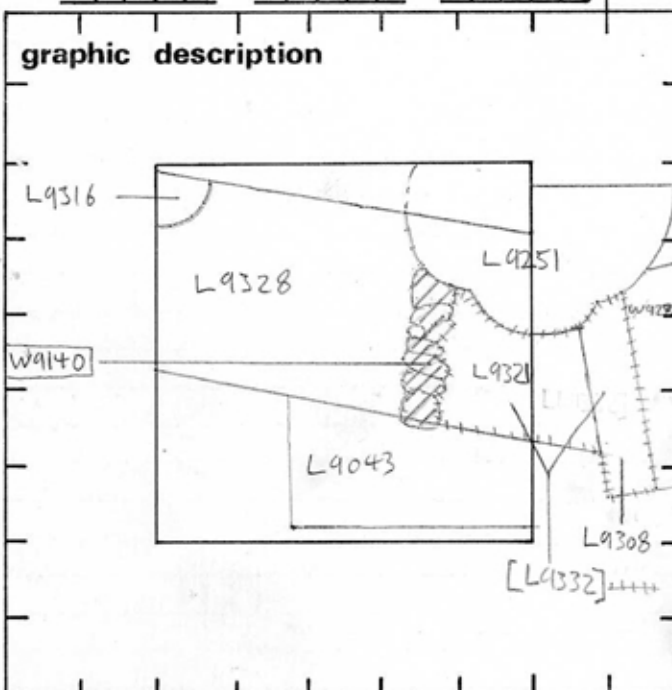
photos

- reason for opening
- definition / limits
- reason for closing
- relation to other elements
- working photos, nos: L34658 - 34661
L34409 - 34112
- publication photos 873525.26.27
- architects permission

written by R. Friedman checked by J. Zorn

may be visible in the section below L9003. The upper course of western row ^{in the north} appeared directly below surface L9081 East. The eastern row in the north is preserved only to the second course, L9131. overlay this, but there was not evidence of Persian disturbance from pit L9089 above. In the south the upper course of the western row was cut by pit L9059. At the southern end L9122 may have cut W9140, but its continuation into the baulk is uncertain. The soil of L9158 reaches W9140

TEL DOR 19 88 field G square AJ33 phase (in area): WALL LOCUS W19140
 date opened 04/08/88 level 144.2 date closed 11/08/88 level 140.4 floor level _____ type of locus WALL
 loci above L9302 loci below _____ sealed by _____



graphic description	final locus no.	arch. unit / logical area	stage (in sq.)	final STRATUM

Summary:

Description: OPENED: WHEN STONES IN L9302 WERE RECOGNIZED AS A WALL WHICH WAS THE EXTENSION OF W9140 IN AJ32

MATRIX: LARGE FIELD STONES APPROX. 40x70cm. PACKED WITH SMALL FIST SIZED FIELD STONES. 3 COURSES WERE EXPOSED.

REASON FOR CLOSING: NOT CLOSED. END OF '88 SEASON.

DEFINITION/LIMITS: BOUNDED BY L9328 TO THE WEST, CUT BY L9251 TO THE NORTH, L9321 TO THE EAST. BOUNDS W9140, and L9043 cuts W9140 to the South.

section

Relationship to other Elements: W9140 is reached by L9328, L9332, and L9321. L9328 is probably tumble from W9140. W9140 is partially robbed out by L9251 and L9043. L9302 covers W9140.



for opening _____
 on / limits _____
 for closing _____
 on to other elements _____
 ing photos, nos: _____
 ation photos _____
 architects permission _____

JZ. '89: See card L9043 for discussion of possible persian pit in this area. If there is a pit, it would have cut W9140

written by J. Yelding Slo checked by _____

TEL DOR

19 89

field

6

square

A.J.3.2

phase (in area):

LOCUS

Card 2

W 19140

date opened

level

date closed

level

floor level

type of locus

Wall

loci above

loci below

sealed by

graphic description



Line Traces
Associations
Described By
Phasing Section
on Duck

Mudbrick
Fill visible
As Foundation
Trench

section

See Back

photos

- reason for opening
- definition / limits
- reason for closing
- relation to other elements
- working photos, nos:
- publication photos
- architects permission

written by R. Lindstromchecked by J. Zorn

final locus no.

arch. unit / logical area

stage (in sq.)

final STRATUM

Summary:

Description:

See Also card 1.

Relations: W9140, and its Mud Brick Packed Foundation Trench Flats Above and Partly Cuts Sloping Surfaces [L9380], [L9501, 9502, 9493, 9494, 9411]. ITS First course is met BY Floor [L9559] on which sits [W9295]. The Wall seems to consist of 2 Phases: Phase I is the lower 1-2 courses, which are met by [F9559]. This is associated with Mud Brick walls [W9400], [9262] and [9295], all of which are aligned and on equivalent levels. Phase 2 would be associated with Stone walls [9065] and [9066] (which makes a corner with [9140] North). Since walls [9065] and [9066] sit on [W9400], these stone walls must belong to a later phase

than the Mud Brick ones.

Since [W9295] sits on both [F9559] and [L9300] (huge blocks/stones) L9300 should be earliest phase E. of W9140. The relations between [W9140] and [L9300] are not yet clear, but [F9559] reaches both of them.

Locus WJ 91149	Dor 19 9.3	Fld 91	Sq AJ32	Loc. type WALL CARD 3 <i>instead</i>
Open Date 20/07/93	High at 1A.216 N	Low at 1.3.40 S	Seals: W9915	_____
Close Date 30/07/93	1B.416 N	1.3.21 C	Sealed by:	_____
Floor: type	_____	_____	Locl	_____
Length 3.6	Width 0.6	Vol	above	_____
Value	Remove	Drawn? YES	below	_____
Photo #(1) 101877	Photo #(2) 101878	Locl W9915	_____	_____
Written by: CUR	Checked by: J.R.Z	_____	_____	_____

Unit	Phase	Stage	Stratum	PoM
------	-------	-------	---------	-----

Summary

Opened: See 1987/1989 cards for previous reason. Currently, uncovered mud brick W9915 under and to W side of W9140.

Limits (N) see 1989 card.

(S) see 89 card

(E) see 89 card

(W) F9493 / F9851

Closed: At end of season - Not closed.

Matrix: Field stones 10-35 cm long; 2 rows wide, 3 courses deep. Seals mud brick W9915, which also extends on W side.

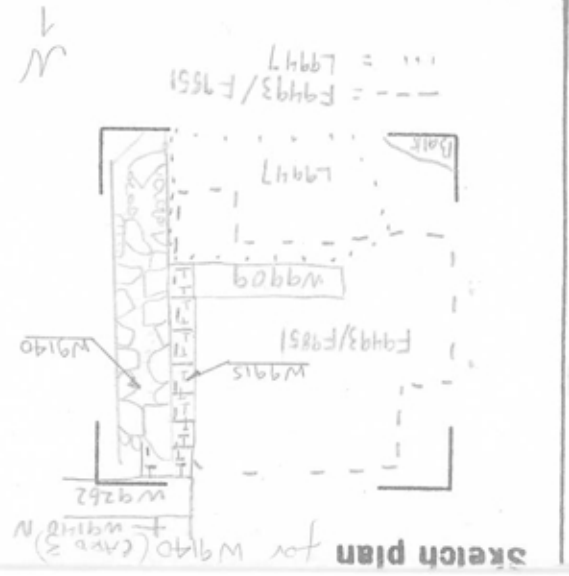
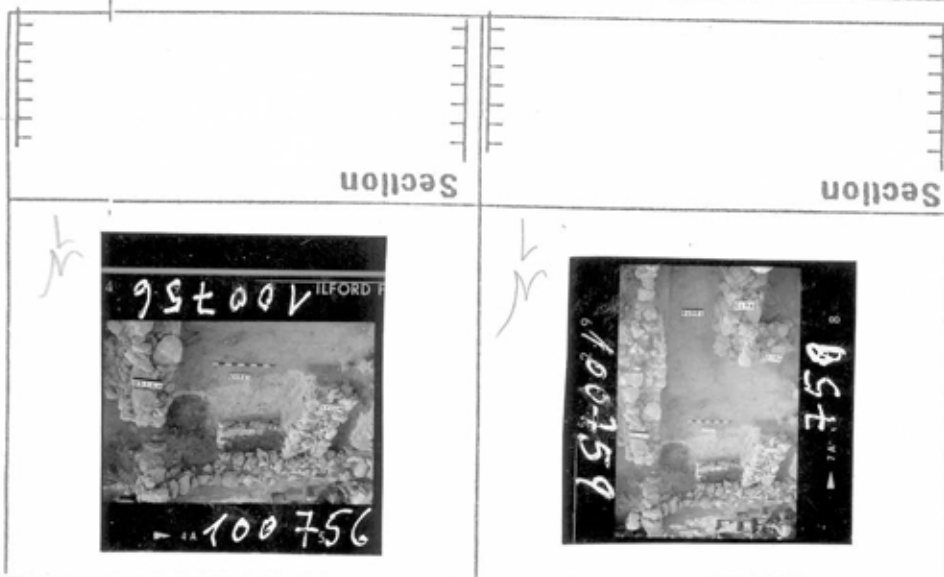
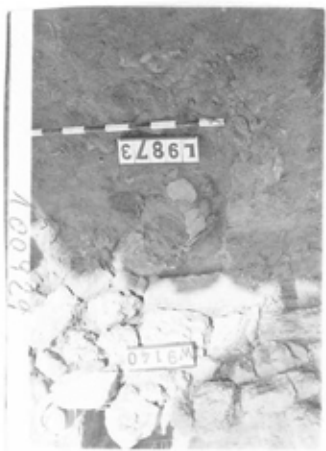
Relations: For previous relations, see 1987 and 1989 cards. F9493/F9851 are the lowest elements of the "sloping surfaces" which reach W9140. No floors below F9493/F9851 will reach W9140.

The foundation trench of W9140 cuts the top preserved mudbricks of W9915, but not W9909, and the lowest stones of W9140 are wedged at odd angles into these top most bricks. W9140 is offset to the E from W9915 below. About half of W9915 is sealed below W9140, the rest of W9915 projects beyond W9140 on the W. W9915 seems to abut W9262 from the S, as W9140 N(AJ33) abuts W9262 from the N. Thus W9140 in AJ32 can only relate to the latest phase(s) of W9140 N.

S of W9909 (W9140) floats on top of L9947; there is no trace of W9915 S of W9909. A thin grey line was seen in the section below W9140 near the top of L9947. This line was not seen in the S half. The line may not have extended far into L9947, or been missed while digging. Could it be a surface laid for the construction of the S end of W9140?

Additional photos: 101879-101890

Additional Observations/Value: Extend N-S across almost entire area G. Very important for determining phasing of all adjacent loci and walls.



Locus W 91140	Dor 19 ₉₄	Fld G	Sq A J 3 3 1 1 1 1	Loc. type Wall (card?)
Open	Date 0.5/0.7/94	High at 1.4.42 S	Low at 1.4.96 G	Seals: _____
Close	0.5/0.8/94	1.3.24 S	1.3.12 M	Sealed by: _____
Floor: type		1.1	1.1	Loci _____
Length 3.3	Width 0.5	Vol _____		above _____
Value 11	Remove 1/1/1	Drawn? Yes		below _____
Photo #(1) ?		Photo #(2) ?		
Written by: J.R.Z		Checked by: J.R.Z		

Unit _____ Phase _____ Stage _____ Stratum _____ PoM _____

Summary _____

Opened: See previous cards

Limits (N) See previous cards

(S) See previous cards

(E) 18021, 18032, 18040, 18067

(W) See previous cards

Closed: Not yet floating, not removed, end of season

Matrix: See previous cards. At the better preserved south end at least 6 courses of field stones are visible; at the north only ca. 4 courses are visible.

Relations: For relations above, N, S and W see previous cards. In '94 the only new relations are to the East.

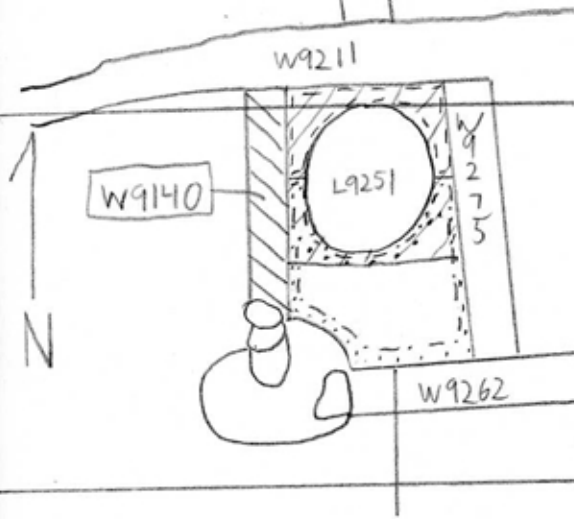
To the East [18021] reaches [W9140], but [F18021] could not be traced to show that it reached [W9140]. [18032] below the north half of [18021] reaches [W9140]. [F18032], a reed mat surface, rises sharply to reach [W9140]. It is not clear if [F18032] is a floor, ceiling or "other" surface fragment. [18040] reaches [W9140]. [18067] reaches [W9140] but it was not possible to trace F18067 as reaching W9140.

Additional Observations/Value: Highly important provides East-West and North-South links in Area G.

Locus
W 9140

--- = 18067 = F18021
... = 18040
- - - = 18032
/// = 18021

Sketch plan



Photo

Photo

Section

Section

Locus W 91140	Dor 19 ₄	Fld G ₁	Sq A, B, 2, 1, 1, 1, 1	Loc. type Wall (card 4)
Open 0.5/0.7/1.4	High 1.1-2.6	at M	Low 1.4-1.2	at S
Close 0.5/0.8/1.4	1.3-6.5	M	1.3-6.3	S
Floor: type 1	Width 1-1	1	Vol 1-1	1
Length 3.6	Remove 1/1/1	Drawn? M, 0	Loci	above
Value 11			Loci	below
Photo # (1) 117537	Photo # (2) 117538			
Written by: JRZ	Checked by: JRZ			

Unit	Phase	Stage	Stratum	PoM
-------------	--------------	--------------	----------------	------------

Summary

Opened: When excavation began along East Side of W9140 in 194

Limits (N) See previous cards

(S) See previous cards

(E) L9300, L18012, L18026, W18048, F/L 18013

(W) See previous cards

Closed: Not closed, end of season

Matrix: see previous cards. Three courses of stone were clearly visible from the East in 194.

Relations: See previous cards

W9140 seems to have been founded directly on mudbrick W9915 (on the West) and W18048 (stones) on the East. W18048 is part of the destruction deposit and so W9140 is clearly post destruction. South of 18048 W9140 seems to be founded on fill. W9140 thus partially covers, and does not seal, W18048.

The only new relations in 194 are to the east.

Since W9140 is founded on two earlier walls it probably uses them as foundation courses alone; thus W9140 should be virtually all superstructure and all related loci should reach it.

Thus: on the East L9300 (pavement) reaches W9140, L18012 and L18026 also reach W9140. A large patch of L/F 18013 adhered to a stone in W9140's lowest course (reaching it).

CAB, who excavated here in 194, believed that L/F 18013 was part of installation L18036 which was built on stone F18035. If this relation is true, then L18035, which can only be said to reach W18048 below W9140 and F18035 which doesn't even reach W18048, may have been in use at the same time as W9140. Thus the topmost course of 18048 may have served as a barely above floor level sole for W9140, and W9140 and F18035 have functioned together.

Additional Photos: 117298-302

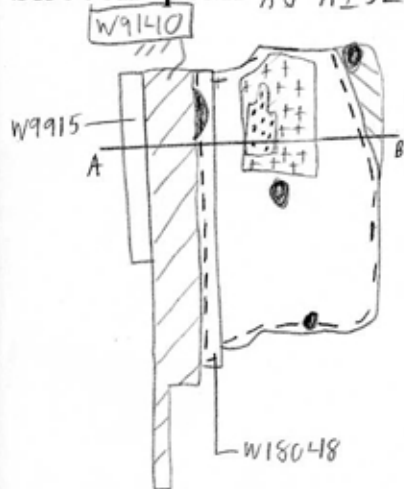
Additional Observations/Value: High value as it links deposits on the East and West sides of Area G

Locus

W 9140

Sketch plan AJ-AI32

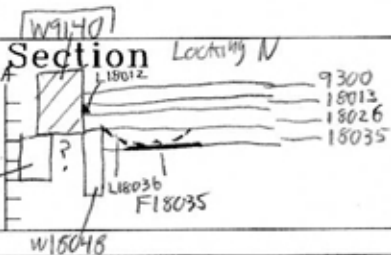
N ↑



-- = L9300
● = F18012
9300 + III = 18026
and = 18035
∴ = 18036
++ = F18035

Photo

Photo



Section

W9915

W18048

B

Locus W 9140	Dor 1917	Fld G ₁	Sq AJ33	Loc. type Wall (card #4)
Open Date 07/07/17	High at 14.42	at C	Low at 14.06	at C
Close Date 08/08/17	High at 12.11	at N	Low at 12.09	at S
Floor: type Length 2.9	Width 9.5	Vol	Drawn?	Seals: _____
Value 1	Remove	Drawn?		Sealed by: _____
Photo #(1) See Isra	Photo #(2)			Loci above _____
Written by: JCM	Checked by: JRZ			Loci below _____

Unit	Phase	Stage	Stratum	PoM
------	-------	-------	---------	-----

Summary

Opened: See previous Cards

Limits (N) See previous Cards

(S) W9140 (AJ32) (W1508)

(E) L18232 = L18279, L18246 = L18281, L18252 = L18254, L18256, L18264 = L18292, L18271 = L18305

(W) See previous cards

Closed: End of season. Not closed.

Matrix: The bottom course of Phase A was constructed with 10x16-20x33 cm roughly shaped Kuvkar boulders. Below this, Phase B [W9140] is made of mostly 8x8 cm fieldstones and 7-8 courses deep. It is set roughly 10 cm in from the east face of Phase A on the south. Phase B is at 12.77 (south)/13.03 (north) and below.

Relations: Above, North, west: See previous Cards.

South: Phase A continues south into AJ32, though it is cut by pit L9168. Phase B ends in the bank under W9262.

East: L18232 = L18279 / F18232 = F18279 reaches [W9140]. (Phase A)

L18246 = L18281 / F18246 = F18281 reaches [W9140]. (Phase A)

L18252 = L18254 / F18252 = F18254 reaches Phase B [W9140].

L18256 / F18256 reaches Phase B [W9140].

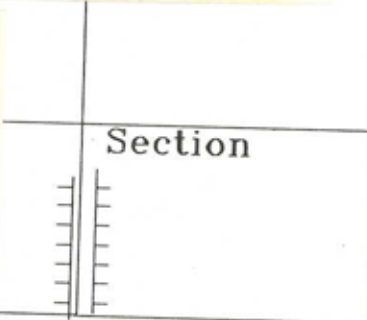
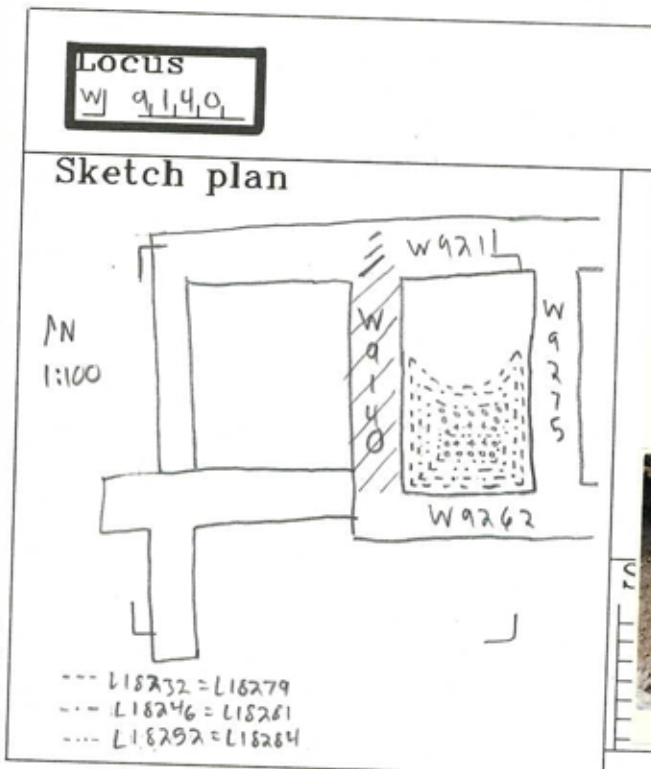
L18264 = L18292 / F18264 = F18292 reaches Phase B [W9140].

L18271 reaches Phase B [W9140].

Below: No numbered loci

It is just possible that the top few preserved stones of W9140, which are slightly smaller than those below, might represent a 3rd, latest, phase in W9140. If this were so the discussion above would refer to phases B (now A) and C (now B).

Additional Observations/Value: High Value.



Note: L18232 = L18279 reflect the total area occupied by all the loci immediately below them.

Locus W 9149	Dor 1977	Fld 6	Sq A532	Loc. type Wall (Card 5)
Open	Date	High at	Low at	Seals: 18048
07/07/97		14.26 N	14.17 S	Sealed by:
Close		13.65	13.63	
Floor: type				Loci
Length 3.6	Width 2.5		Vol	above
Value 1	Remove 09/07/97		Drawn? yes	
Photo #(1)	Photo #(2)			Loci 18048 9915 18214 18219
Written by: JCM	Checked by: JRZ			below

Unit	Phase	Stage	Stratum	PoM
------	-------	-------	---------	-----

Summary

Opened: See Card 4

Limits (N) See Card 4

(S) See Card 4

(E) See Card 4

(W) See Card 4

Closed: Removed Wall.

Matrix: See Card 4.

Relations: See earlier cards.

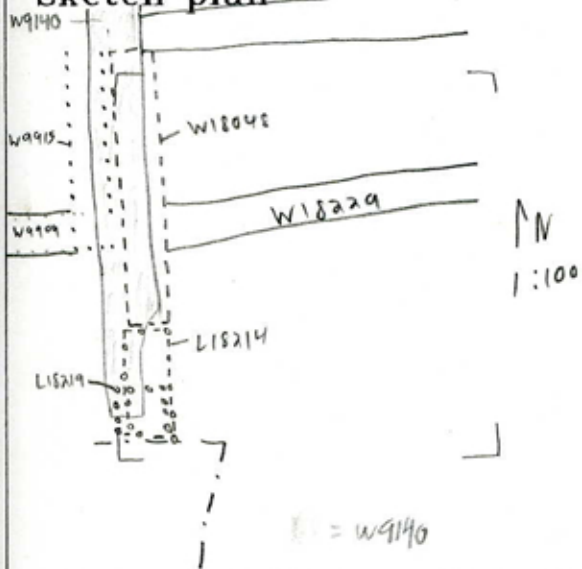
Below: W9140 covers partially W9915 and W18048.

W9140 covers L18219 and L18214, but does not seal them

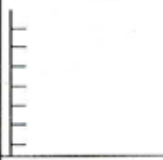
Additional Observations/Value: High Value.

Locus
W 9140

Sketch plan



Section



Section

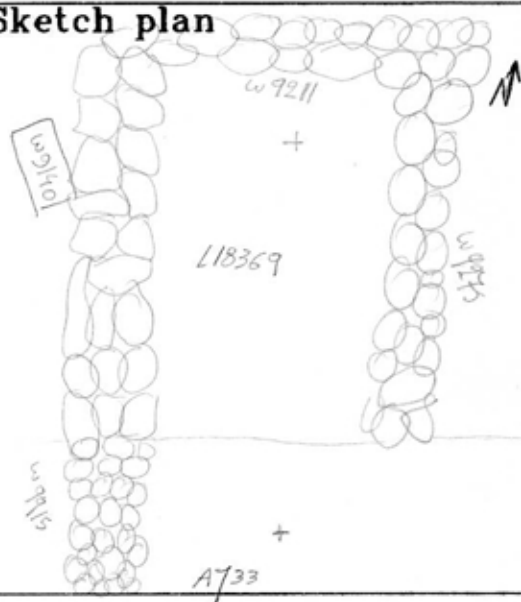


Locus W 9140	Dor 1999	Fld G	Sq AJ 33	Loc. type WALL (CONTINUATION CARD)
Open Date 01/07/99	High at 13.04 M	Low at 12.73 E	Seals: _____	Sealed by: _____
Close Date 01/08/99	12.010 M	11.73 C	Loci above _____	below _____
Floor: type _____	Length _____	Width _____	Vol _____	Drawn? <input checked="" type="checkbox"/>
Value <u>4</u>	Remove _____	Photo #(1) _____	Photo #(2) _____	Unit _____
Written by: KV	Checked by: JRZ	Phase _____		
Summary		Stage _____		
Stratum _____		PoM _____		
Opened: W 9140 WAS EXCAVATED IN L18369				
Limits (N) SEE PREVIOUS CARDS				
(S) STAGE A OF W 9915				
(E) L18365				
(W) SEE PREVIOUS CARDS				
Closed: W 9140 WAS FLOATING AT SOME PLACES IN THE NORTH. WALL WAS NOT REMOVED				
Matrix: (SEE PREVIOUS CARDS) ONLY 2 OR 3 COURSES OF FIRST TO HEAD SIZE STONES SHOULD BE ADDED TO THE BOTTOM				
Relations: THIS CARD WAS WRITTEN TO ADD FOUR THINGS TO THE HISTORY OF THIS WALL				
1. W 9140 IS FLOATING ^{in the North} ONLY IN A VERY FEW PLACES IN L18369 ON THE EAST. L18369 SEEMS TO BE CUT BY W 9140				
2. THE STAGE OF W 9140 WHICH WAS EXCAVATED THIS YEAR EQUALS STAGE B AND C OF W 9915. THE NUMBER W 9140 HAS NOW TECHNICALLY ONLY VALUE FOR THE UPPER STAGES OF THIS WALL (= BIG STONES) ^{and apex} THEREFORE, THE LEVELS GIVEN AT THE TOP ARE THE UPPER AND LOWER LEVELS OF W 9915 IN THE NORTH IN AJ33				
In other words: W 9140 Stage A = top 4-5 course of double-head size stones. Stage B = large boulders 1 course high Stage C = North continuation of W 9915				
Additional Observations/Value: High value. Ties squares AJ32 and 33 together through wall stage				

Locus

W 9, L 49

Sketch plan



Photo

Photo

Section

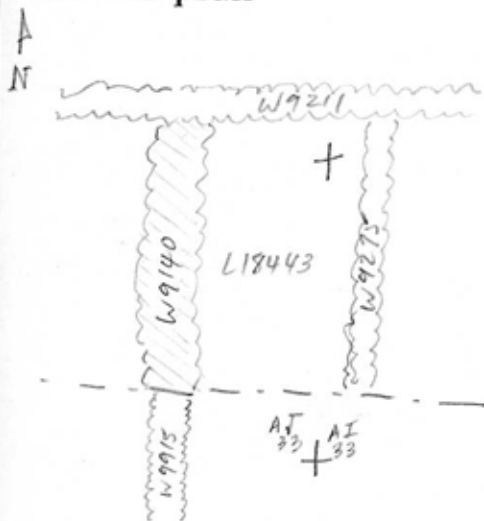
Section

Locus W 91149	Dor 20 00	Fld 91	Sq A1J331	Loc. type wall (card #6)
Open Date 0.4 / 10.8 / 18.8	High at 14.42	Low at 13.12	Seals: _____	Sealed by: _____
Close _____	_____	_____	Loci above _____	_____
Floor: type _____	Width _____	Vol _____	Loci below _____	_____
Length 3.3	Remove _____	Drawn? YES	Photo #(1) _____	Photo #(2) _____
Value 1-	_____	_____	Written by: WSB	Checked by: EBS
Unit _____	Phase _____	Stage _____	Stratum _____	PoM _____
Summary				
Opened: see previous cards.				
Limits (N) _____				
(S) _____				
(E) hypothetical foundation trench L18469				
(W) _____				
Closed: still standing at end of season.				
Matrix: _____				
Relations:				
- for Phase B see 1997 card (#4), @ 12.77(S) - 13.03(N)			} IS '02 lean photos of floors this is the base elevation of phase B, i.e. top elevation for W 18481 !!	
- floating in N in L18369 (E), F18369 cut by W9140.				
- 1999: Stages B+C of W9104 = W9915				
Stage A = top 4-5 courses of double-head size stones				
Stage B = large boulders 1 course high				
Stage C = north continuation of W9915				
2000: W9275 = W9140 Ph. A				
W18481 = W9140 Ph. B				
Additional Observations/Value: high value.				

Locus

W 9440

Sketch plan



Photo

Photo

Section

Section