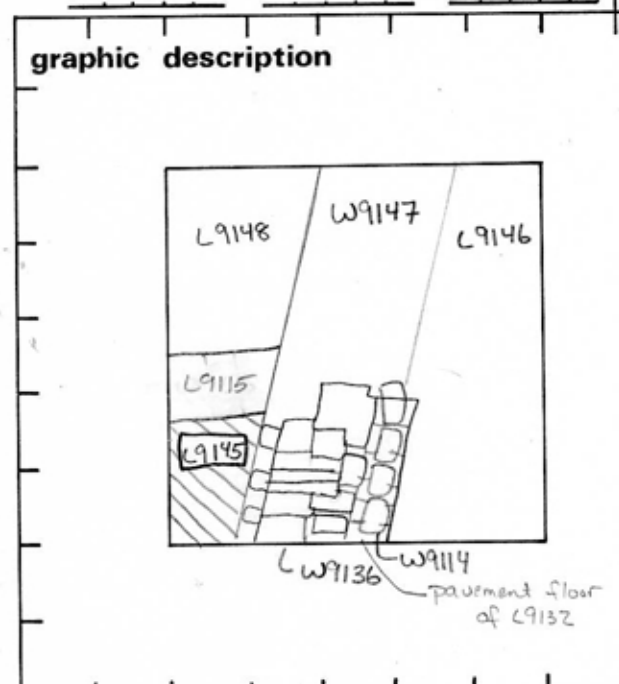


TEL DOR 1987 field G square AK3.2 phase (in area): - LOCUS L9145

date opened 17/07/87 level 15.67 date closed 22/07/87 level 15.40 floor level _____ type of locus Rubble
FILL DOWN TO WALL OR

loci above 9132 loci below W9162 L9163 sealed by _____



section

- photos
- reason for opening
 - definition / limits
 - reason for closing
 - relation to other elements
 - working photos, nos:
 - publication photos
 - architects permission
- written by Ria Anderson checked by J. Jarn

final locus no.	arch. unit / logical area	stage (in sq.)	final STRATUM

Summary:

Description: OPENED: CAME DOWN UPON WALL WITH A THRESHOLD BUILT INTO IT W9136 AND PAVEMENT ^(FLOOR 9132) DIRECTLY EAST OF W9136, IN THE EASTERN HALF OF L9132, SO THE WESTERN PART BECAME K9145.

DEFINITION / LIMITS: L9145 LIES DIRECTLY ABOVE W9162 AND L9163 AND DIRECTLY BELOW L9132. TO THE WEST AND SOUTH L9145 BORDERED BY Baulks, TO THE NORTH IT IS BORDERED BY L9115 AND TO THE EAST BY W9136.

MATRIX: JUST LIKE THAT OF L9132, HARD PACKED LIGHT BROWN DIRT WITH OCCASIONAL SMALL ROCKS.

REASON FOR CLOSING: CAME DOWN ON TWO COURSE DEEP, THREE COURSE WIDE LINE OF RUBBLE WHICH LOOKED AS IF IT MAY HAVE BEEN A WALL W9162.

RELATION TO OTHER ELEMENTS: MATRIX OF L9145 JUST LIKE THAT ABOVE L9132 AND BELOW L9163 IT. L9145 REACHES W9136 AND IS CUT BY L9115. L9145 LOOKS AS IF IT MAY HAVE BEEN CUT BY K9147.

