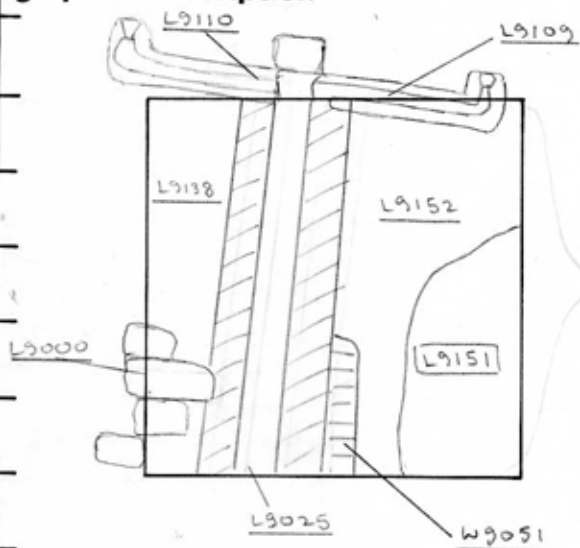


TEL DOR 1987 field G square AI32 phase (in area): _____ LOCUS L9151
 date opened 20/07/87 level 15.20 date closed 22/07/87 level 14.63 floor level _____ type of locus PIT?
 loci above L9130 loci below 9165 sealed by _____

graphic description



section

final locus no.	arch. unit / logical area	stage (in sq.)	final STRATUM

Summary:

Description:

REASON FOR OPENING IDENTIFIED MATERIAL IN S.E. CORNER OF SQUARE BELOW KURKAR FLOORS [L9099A] AND [L9099B]. AS OF A DISTINCTLY DIFFERENT CHARACTER - PROBABLY A PIT, OR FILL PACKED DOWN BELOW THE KURKAR FLOORS.

DEFINITION / LIMITS IT IS BOUNDED BY THE SOUTH AND EAST BAULKS AND BY [L9152] ON ALL OTHER SIDES. [L9130] LIES ABOVE IT, AND [L9165] BELOW IT.

MATRIX FINE GRAY SANDY MATERIAL, CONTAINING A LOT OF ASH, WITH MANY LUMPS OF CHARCOAL. VERY LARGE AMOUNT OF MIXED POTTERY, OFTEN IN THICK LAYERS, WITHIN THE FILL.

photos

- reason for opening
- definition / limits
- reason for closing
- relation to other elements
- working photos, nos:
- publication photos
- architects permission

written by C. Hallett

checked by J. Zorn

OK

REASON FOR CLOSING DISCOVERED END OF PIT - SOIL CHANGE. COLLAPSED 9151 + 9152 INTO

9165

RELATION TO OTHER ELEMENTS TECHNICALLY, [L9151] LIES BELOW [L9130]. BUT FROM THE BAULK IT SEEMS THE PIT MATERIAL EXTENDED FROM BELOW FLOORS [9099A+B] AND BELOW PIT [L9100]. [L9151] CUTS [L9152], AND LIES ABOVE [L9165]. THIS LOCUS EXTENDED INTO AI31 AND FORMED THE EASTERN PARTS OF [L9050], [L9055] AND [L9056].

