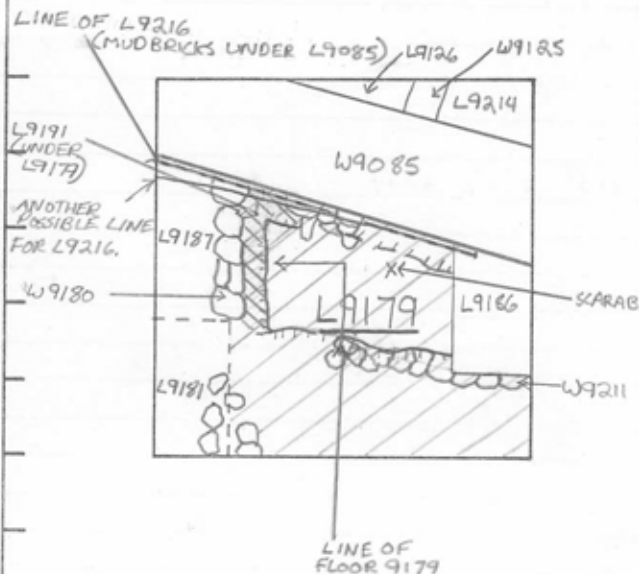


TEL DOR 19-87 field 6 square A.53.4 phase (in area): LOCUS L9.1.79.
 date opened 22/07/87 level 146.1 date closed 05/08/87 level 144.2 floor level 144.2 type of locus FILL ABOVE FLOOR
 loci above 9160 loci below 9276 sealed by

graphic description



section

photos

- reason for opening
- definition / limits
- reason for closing
- relation to other elements
- working photos, nos:
- publication photos 8735 25.18 -21
- architects permission

written by A. Stenfill

checked by J. Zorn
cll



final locus no. arch. unit / logical area stage (in sq.) final STRATUM

Summary:

Description:

OPENED: UPON DISCOVERY OF W9180 WHICH SPLIT L9160 (AREA SOUTH OF W9085) INTO L9181, L9186, L9187 AND L9179

DEFINITION/LIMITS: AREA SOUTH OF MUD BRICK (L9216) UNDER W9085 BOUNDED ON THE WEST BY W9180 AND L9181, ON THE EAST BY L9186 AND THE EAST BAWK AND ON THE SOUTH BY THE SOUTH BAWK.

MATRIX: PRIMARILY LOOSE GREY SANDY FILL SIMILAR TO L9160 ABOVE, BUT WITH SOME RED CRUMBLY CLAY AND CHUNKS OF DARK BROWN MUD BRICK MATERIAL. FLOOR SURFACE OF SOFT WHITE PLASTER

REASON FOR CLOSING: REACHED FLOOR 9179

RELATION TO OTHER ELEMENTS: L9179 IS CUT BY L9186 (PIT). L9179 REACHES L9181. FILL ABOVE FLOOR 9179 REACHES WALL 9180, BUT FLOOR 9179 REACHES (IS CUT BY ?) L9191, AN AREA OF CRUMBLY RED MUD-BRICK MATERIAL TO THE EAST OF W9180. IT IS SUPPOSED THAT F9179 ORIGINALLY REACHED THE MUD BRICK (L9216) UNDER W9085, BUT THE CONNECTION IS SO BADLY DESTROYED BY RUBBLE IT IS IMPOSSIBLE TO SAY CONCLUSIVELY AT THIS POINT.

AFTERNOTE: A LIKELY EXPLANATION FOR THIS SITUATION IS THAT WE HAVE THE CORNER OF A ROOM WHICH HAS 9180 AND 9211 AS WALLS, 9179 AS A FLOOR (OVER)

