

TEL DOR

1987

field

G

square

A.534

phase (in area):

LOCUS W/9211

date opened

04/08/87

level

421  
1441

date closed

05/08/87

level

floor level

type of locus

WALL

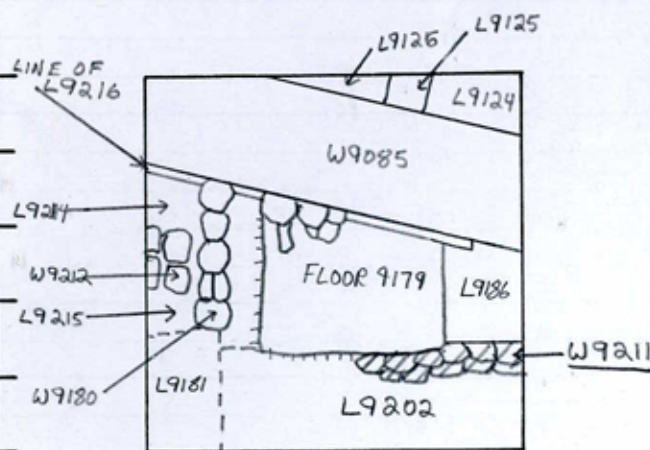
loci above

9179

loci below

sealed by

graphic description



section

photos

- reason for opening  
 definition / limits  
 reason for closing  
 relation to other elements  
 working photos, nos:  
 publication photos  
 architects permission

written by DENNIS C. STANFILL checked by J. Zorn

final locus no.

arch. unit / logical area

stage (in sq.)

final STRATUM

Summary:

Description:

OPENED WHEN A WALL WAS DISCOVERED IN A MINI BANK DIVIDING L9186 AND L9202.

DEFINITION/LIMITS: ROUGH FIELDSTONE WALL EXTENDING 2.5 METERS INTO A534 FROM THE EAST BANK. BOUNDED ON THE NORTH BY THE SOUTH FACE OF FLOOR 9179 AND THE MATERIAL BELOW IT AS WELL AS THE SOUTH SIDE OF L9186.

MATRIX: IRREGULAR FIELDSTONES IN A HARD CLAY BINDER. ONLY 1 COURSE VISIBLE AT PRESENT.

REASON FOR CLOSING: END OF 87 SEASON; NOT CLOSED

RELATIONSHIP TO OTHER ELEMENTS: THIS WALL IS EXPECTED TO

CROSS AND JOIN W9180, BUT DUE TO TIME LIMITS WE WERE NOT ABLE TO EXCAVATE IT COMPLETELY. L9202 REACHES W9211, FLOOR 9179 MAY REACH W9211, BUT THE PLASTER IS SO POORLY PRESERVED IT IS IMPOSSIBLE TO SAY CONCLUSIVELY. L9186 POSSIBLY CUTS PART OF THE NORTH FACE OF W9211

<b>Locus</b> WJ 9211	<b>Dor</b> 1993	<b>Fld</b> 6	<b>Sq</b> A134	<b>Loc. type</b> Rubble Wall <u>entrail</u>
<b>Open</b> <u>07/07/93</u>	<b>Date</b>	<b>High</b> <u>at</u> <u>14.44</u> <u>E</u>	<b>Low</b> <u>at</u> <u>13.31</u> <u>W</u>	<b>Seals:</b> _____
<b>Close</b> <u>04/08/93</u>		<u>13.42</u> <u>W</u>	<u>13.29</u> <u>E</u>	<b>Sealed by:</b> _____
<b>Floor:</b> type _____				<b>Locl</b> <u>9866</u> <u>1680</u> _____
<b>Length</b> _____	<b>Width</b> _____	<b>Vol</b> _____		<b>above</b> _____
<b>Value</b> _____	<b>Remove</b> _____	<b>Drawn?</b> <u>YES</u>		<b>Locl</b> _____
<b>Photo # (1)</b> _____	<b>Photo # (2)</b> _____			<b>below</b> _____
<b>Written by:</b> <u>RSS</u>	<b>Checked by:</b> <u>JAZ</u>			

<b>Unit</b> _____	<b>Phase</b> _____	<b>Stage</b> _____	<b>Stratum</b> _____	<b>PoM</b> _____
-------------------	--------------------	--------------------	----------------------	------------------

<b>Summary</b>
----------------

**Opened:** L9866 came down on the E. extension of W9211.

**Limits (N)** Unexcavated rubble fall.

**(S)** W9275, L9872, L9816, L9919, L9928, L9684

**(E)** See 1993 card for AH/A134

**(W)** See 1993 card for A134

**Closed:** End of Season - Not closed.

**Matrix:** 6 to 7 courses of mostly head-sized and doublehead sized rocks. Possibly two phases. Upper phase is d to 2 rows of stones wide while lower phase appears adjacent to W9684 and is wider by one row of stones (head-size and smaller) in the lowest two visible courses. See also L9928 card.

**Relations:**

L9866 and cleaning below pit. L9680 revealed the E. extension of W9211. Both L9866 and the twilight zone below L9680 cover but do not seal W9211.

The N. face of W9211 is obscured by unnumbered rubble fall which continues N. into the unexcavated fill of A134.

To the W. and E. W9211 continues into A134 and AH34 respectively.

To the S. L9872 reaches the upper phase of W9211.

Below this, L9816 rubble fall from W9211 and W9684 also reaches the upper phase of W9211. Presumably L9916 also reached this phase.

L9919 appears to reach an earlier phase of W9211 (normal phase from top).

Below this, L9928 also reaches this second phase, and L9928 climbs sharply along the S. face of W9211 (L9928 really reaches W9211).

W9684 appears to abut W9211 (though see AH34 card) and W9275; the stone socle for a mudbrick wall appears to dovetail with W9211. In fact, the mudbricks from W9275 dovetail with stones from W9211. See sections below.

However, the stones of W9275 appear to abut the face of W9211.

**Additional Observations/Value:** Very high value; big wall.





Locus W 9211	Dor 19 <sup>93</sup>	Fld G <sub>1</sub>	Sq AH/ATBA	Loc. type WALL CARD #2 entered
Open	Date 02/07/93	High at 14.64 S	Low at 14.48 N	Seals: _____
Close	06/08/93	13.51 W	13.60 E	Sealed by: _____
Floor: type C/F	Width unknown	Vol	Drawn? YES	Locl SEE PREVIOUS SEASONS' CARDS
Length 2.8	Remove			above _____
Photo #(1) SEE ISRA	Photo #(2) SEE ISRA			Locl _____
Written by: SER	Checked by: JRZ			below _____

Unit	Phase	Stage	Stratum	PoM
Summary				

Opened: WHEN W9825 WAS FOUND TO BE A CONTINUATION OF W9211

Limits (N) SEE PREVIOUS SEASONS' CARDS for W9825  
 (S) L9855, L9876  
 (E) SEE PREVIOUS SEASONS' CARDS for W9825  
 (W) WALL CONTINUES INTO AJ34, SEE PREVIOUS SEASONS' CARDS for W9825

Closed: NOT CLOSED, END OF SEASON

Matrix: VERY LARGE FIELDSTONES WITH SMALLER COBBLES INTERMIXED RANGING FROM 20 CM TO 60+ CM IN DIAMETER. Width of wall uncertain because the proximity of [W9787] makes it impossible to adequately trace the N face of W9211.

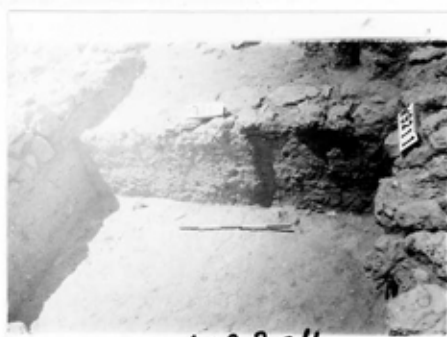
Relations: W9211 COVERS AND SEALS UNEXCAVATED MATERIAL BELOW. IT IS REACHED BY L9855, L9876, L9937 AND L9994, AS WELL AS F9876. W9211 ABUTS W9684 AND W9266, AND CONTINUES INTO AJ34. AREA TO THE NORTH OF W9211 REMAINS UNEXCAVATED, AND THE WIDTH OF THE WALL REMAINS UNCERTAIN. F9876 NOT ONLY REACHES W9211 BUT ALL FOUR OTHER WALLS IN THE ROOM: W9684, W9729, W9266, AND W9845.

ALSO, PLEASE SEE PREVIOUS SEASONS' CARDS.

93 JRZ: relation of [W9211] to W9684 not yet certain. They could dovetail; also W9684 could abut [W9211]

Additional Observations/Value: VERY IMPORTANT IR WALL CONSIDERING ITS RELATIONS  
 ADD'L PHOTOS

Sketch plan



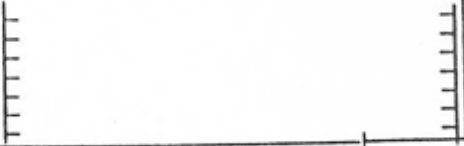
102304

Section



102297

Section



100573



102304



102310

Locus WJ 9211	Dor 19 913	Fld G1	Sq A, J, 3, 4	Loc. type wall <u>entrance</u>
Open Date 8/5/87/93	High at 14.41	Low at 18.28 NE	Seals: <u>    </u> <u>    </u> <u>    </u> <u>    </u>	Sealed by: <u>    </u> <u>    </u> <u>    </u> <u>    </u>
Close Date 8/4/88/93	13.11 G1	13.84 CE	Locl <u>    </u> <u>    </u> <u>    </u> <u>    </u>	above <u>    </u> <u>    </u> <u>    </u> <u>    </u>
Floor: type <u>1</u>	Width <u>8.6</u>	Vol <u>    </u> <u>    </u> <u>    </u> <u>    </u>	Locl <u>    </u> <u>    </u> <u>    </u> <u>    </u>	below <u>    </u> <u>    </u> <u>    </u> <u>    </u>
Length <u>5.0</u>	Remove <u>1/1/1</u>	Drawn? <u>YES</u>		
Photo #(1) _____	Photo #(2) _____			
Written by: <u>SMS</u>	Checked by: <u>  </u>			

Unit _____	Phase _____	Stage _____	Stratum _____	PoM _____
------------	-------------	-------------	---------------	-----------

Summary \_\_\_\_\_

Opened: see Card #

Limits (N) See Card #

(S) See Card #

(E) See Card #

(W) The unexcavated material below W9510 bounds W9211 to the West.

Closed: Not closed, end of season

Matrix: See Card #

Relations: In the '93 season, W9211 was found to extend to the unexcavated material below W9510 to the West. W9211 continues into this matrix.

W9211 is reached by L9860 and by Floor II of L9860. Below L9860, L9940 appears to reach W9211, but this locus was not excavated this season and the relationship is difficult to determine. Also below L9860, W9914 and L9923 reach W9211. Below L9923, L9969 reaches W9211. It is also possible W9914 is cut by W9211.

On the North face of W9211, L9861 reaches W9211, as does L9881 below L9861 and L9903 below that. L9974 and L9985 below L9903 also reach W9211. Then unnumbered mudbricks below L9903 to the East of L9985 also reaches W9211. W9904 abuts W9211 and L9905 reaches W9211. L9906 reaches W9211.

On the North face of W9211 a seam was noticed in the stone corseponding to the projected line of the East face of W9140. A possible doorway was uncovered on the South side of W9211 East of the East face of W9914. This doorway appears to belong to Phase 2 of W9211, with Phase 1 being a later construction where this doorway was walled over. The side of the possible door aligns with the West face of W9408.

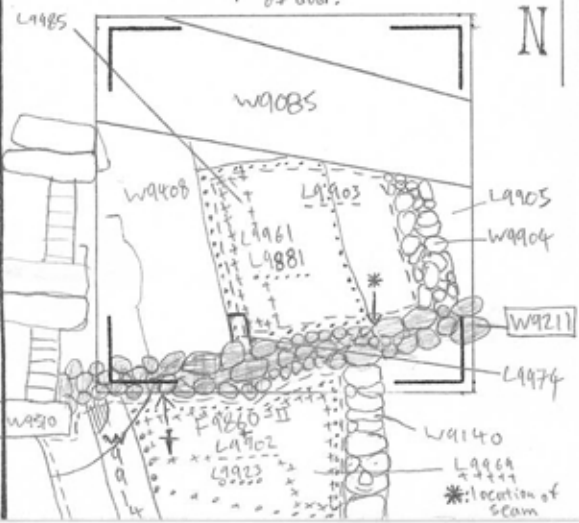
Additional Observations/Value: Iron Age Wall exhibiting different phases of construction abutting several Iron Age walls and reached by several floors

High Value.

**Sketch plan**

Scale 1:100

†: location of door



**Section**



**Section**





Locus W 92111		Dor 19 <sub>94</sub>	Fld G	Sq A534	Loc. type Wall Card
Open	Date	High at	Low at	Seals:	
	05/08/94	13.64 M	14.21	Sealed by:	
Floor: type				Loci	
Length 4.5	Width 0.6		Vol	above	
Value	Remove		Drawn? YCS	Loci	
Photo #(1) See Isrd	Photo #(2)			below	
Written by: JRZ	Checked by: JRZ				
Unit	Phase	Stage	Stratum	PoM	

### Summary

Opened: See Previous cards

Limits (N) 18004, 18065, 18089, W9408

(S) 18021, 18032, 18015, 18063, 18054

(E) See previous cards

(W) See previous cards

Closed: W9211 is floating at its west end (where it goes into balt below W9510); this section has not yet been removed. W9211 is not closed at end of 194 season.

Matrix: Mostly head to 2x-head sized stones with fist sized cobble chinking. 4-5 courses were visible on the South face, and as many as 11 courses on the north.

Relations: For relations above, E and W see previous. Only new relations in '94 were to North and South

On the North L18004 (a pit) may cut W9211; it certainly reaches W9211. F18004 does reach W9211. W9211 probably cuts the top few centimeters of L18041 (below 18004), but L18041 in the main continues below W9211 to the south. W9211 floats here at 13.72-13.64. The inner stone part of W9408 abuts W9211. L18065 apparently reaches W9211, though on the plans of JYS it seems that 18065 steps well north of W9211. F18065 does reach W9211 (and W9904). L18089 reaches W9211 as does L18054 \*

On the South L18021 reaches W9211. No trace of F18021 was found in the vicinity of W9211 so the relation of this floor to W9211 is undeterminable. L18032 reaches W9211; F18032 (creed matting) reaches W9211 but it is unclear if F18032 is a true floor or ceiling material collapsed against W9211. L18015 may reach or is cut by W9211; it is difficult to be certain as only a small area of L18015 was adjacent to W9211. L18063 is below the bottom level of W9211 in this area.

\* W9211 seems to begin to float in L18065 just east of the "seam", where W9140 to the south abuts W9211

Additional Observations/Value: High Value. In use for many years with many floor and wall relations.





Locus W 9211	Dor 1977	Fld G	Sq A1-A133	Loc. type Field Gene Wall C
Open	Date 07/07/97	High at 14.44	Low at 11.30	Seals: _____
Close	08/08/97	12.23	12.09	Sealed by: _____
Floor: type				Loci _____
Length 8.5	Width 0.8	Vol	Drawn? Yes	above _____
Value 1	Remove			below _____
Photo #(1)	Photo #(2)			
Written by: JCM	Checked by: JRC			

Unit	Phase	Stage	Stratum	PoM
------	-------	-------	---------	-----

Summary

Opened: See previous cards

Limits (N) see previous cards

(S) L18259, L18283, L18285, W9140, W9275

(E) See previous cards

(W) see previous cards

Closed: not closed, end of season.

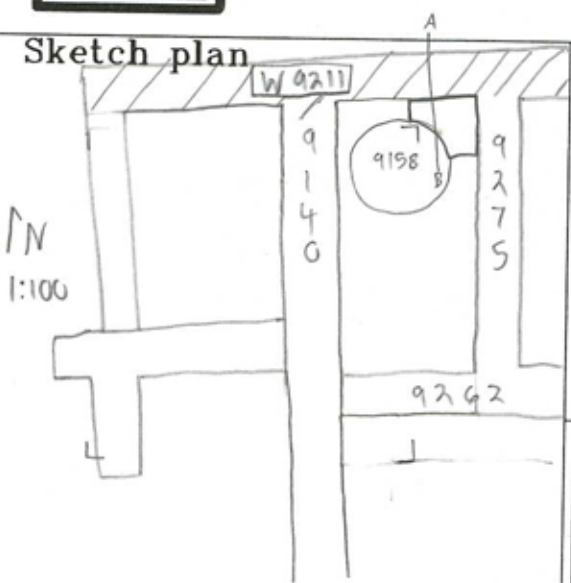
Matrix: See previous card For Phase A. Phase B begins at 13.06/12.08 cm<sup>(west/east)</sup> and is made of unwaxed stores ranging in size from 9x12 to 9x19 cm.

Relations: South: L18259/F18259, L18283/F18283, and L18285 reach W9211 Phase. W9140B abuts with W9211 to west Phase A-D. W9275 abuts W9211

Additional Observations/Value: High Value.

**Locus**  
W 9211

Sketch plan



143669



143670



143671



167650

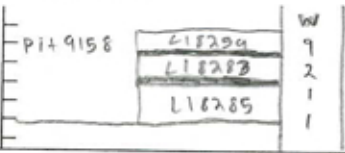


167646



167649

Section





<b>Locus</b> W 9211	<b>Dor</b> 1999	<b>Fld</b> G <sub>1</sub>	<b>Sq</b> AJ-AE 33 <sub>1</sub>	<b>Loc. type</b> WALL (CONTINUATION CARD)
<b>Open</b> 017/07/99	<b>Date</b>	<b>High at</b> 14.44 C <sub>1</sub>	<b>Low at</b> 14.21 W <sub>1</sub>	<b>Seals:</b> _____
<b>Close</b> 29/07/99		12.37 W <sub>1</sub>	12.10 C <sub>1</sub>	<b>Sealed by:</b> _____
<b>Floor: type</b>		_____	_____	<b>Loci</b> _____
<b>Length</b> 0.5	<b>Width</b> 0.8	<b>Vol</b> _____		<b>above</b> _____
<b>Value</b> U <sub>1</sub>	<b>Remove</b> _/_/_	<b>Drawn?</b> NP <sub>1</sub>		<b>below</b> _____
<b>Photo #(1)</b> _____	<b>Photo #(2)</b> _____			
<b>Written by:</b> KY <sub>1</sub>		<b>Checked by:</b> JRZ		

**Unit** \_\_\_\_\_ **Phase** \_\_\_\_\_ **Stage** \_\_\_\_\_ **Stratum** \_\_\_\_\_ **PoM** \_\_\_\_\_

**Summary**

**Opened:** W 9211 FURTHER EXCAVATED WITHIN L18369

**Limits (N)** see PREVIOUS CARDS

(S) L18369

(E) } see PREVIOUS CARDS

(W) }

**Closed:** W 9211 WAS FLOATING BUT NOT REMOVED

**Matrix:** (see PREVIOUS CARDS) ONLY ONE OR TWO COURSES OF SMALL HEADSIZE STONES SHOULD BE ADDED AT THE BOTTOM

**Relations:** ABOVE:

NORTH:

EAST:

WEST:

SOUTH: W 9211 STARTED TO FLOAT IN L18369. F18369 CONTINUES INTO THE BALK UNDERNEATH W 9211

BELOW: NO RELATIONS

Note that W 9211 begins to float ca. 35 cm before the N part of W 9915 (formerly 9140 lowest stage) does

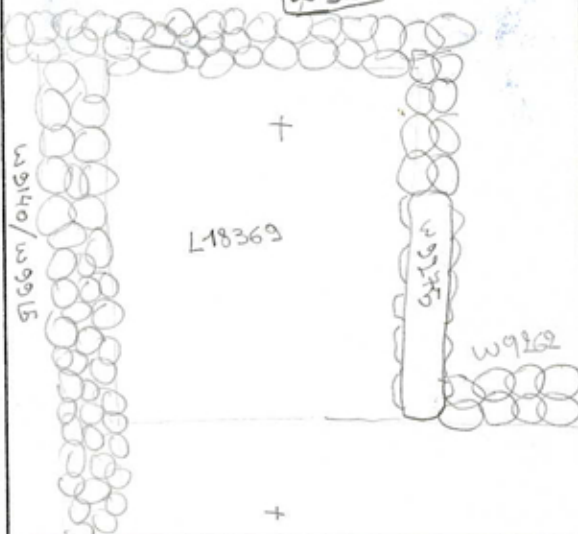
**Additional Observations/Value:** MEDIUM VALUE

LOCUS

W 9211

Sketch plan

W 9211



W 9140 / W 9915

L 18369

W 9269

W 9962

