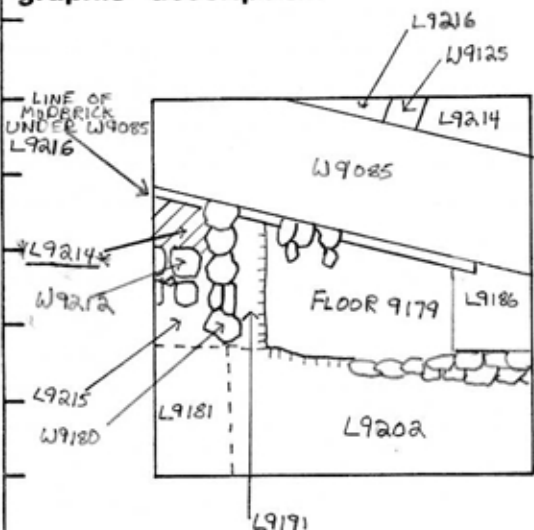


TEL DOR 19 field 6 square AJ.3.4 phase (in area): LOCUS L19.21.4

date opened 05/08/87 level 1454 date closed 05/08/87 level --- floor level --- type of locus STRATIFIED ACCUMULATION

loci above L9187 loci below --- sealed by ---

graphic description



final locus no. arch. unit / logical area stage (in sq.) final STRATUM

Summary:

Description:

OPENED: UPON DISCOVERY OF W9212 WHICH SPLIT L9187 (AREA SOUTH OF L9216, WEST OF W9180 AND NORTH OF L9181) INTO L9214, W9215 AND W9212.

DEFINITION/LIMITS: AREA NORTH OF W9212, WEST OF W9180 AND SOUTH OF L9216.

MATRIX: SANDY GREY FILL WITH CHUNKS OF MUD BRICK MATERIAL, SOME SMALL RUBBLE STONES VISIBLE, NOT EXCAVATED.

REASON FOR CLOSING: END OF 87 SEASON, NOT CLOSED.

RELATIONSHIP TO OTHER ELEMENTS: L9214 REACHES L9216. L9214 REACHES W9212 AND W9180.

section

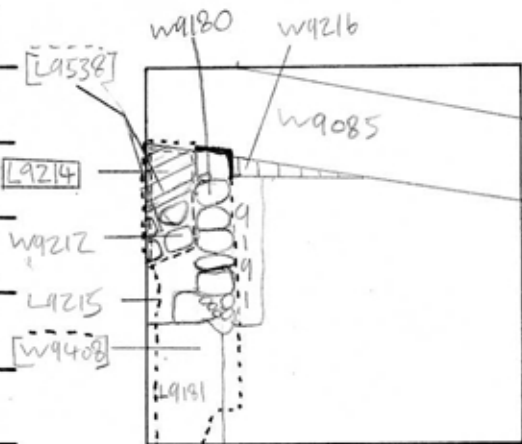
photos

- reason for opening
- definition / limits
- reason for closing
- relation to other elements
- working photos, nos:
- publication photos
- architects permission

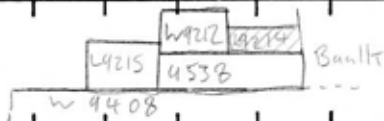
written by DENNIS C. STANFILL checked by J. Zorn

CARD 2
 TEL DOR 1989 field G square AJ.3.4 phase (in area): Card 2
 LOCUS L9214
 date opened 02/08/89 level 145.4 date closed 02/08/89 level 143.2 floor level _____ type of locus Stratified Accumulation
 loci above 918.7 loci below 953.8 sealed by _____

graphic description



section



photos

- reason for opening
- definition / limits
- reason for closing
- relation to other elements
- working photos, nos:
- publication photos
- architects permission

written by John Felding Sloan checked by J. Zorn

final locus no. _____ arch. unit / logical area _____ stage (in sq.) _____ final STRATUM _____

Summary:

Description: OPENED: see Card #1

Definition/Limits: Area North of W9212, West of W9180, and South of mudbricks in Baukt below W9085, which are probably W9408, not W9216.

Matrix: orange and brown mudbrick.

Relationship to Other Elements: L9214 is cut by W9212 and W9180. L9214 covers L9538 w/ W9212. L9214 and L9538 are both of the same mudbrick matrix and are upper courses of W9408. The bricks to the North of L9214 in the Baukt below W9085 belong to W9408, not W9216. This is because the bricks in the Baukt are orange and

brown, like the bricks of W9408, while the bricks of W9216 are all orange in color. This means L9214 is part of the matrix of W9408. The bit of material to the North of W9180 and to the East of L9214 is part of W9408 for the same reason.

