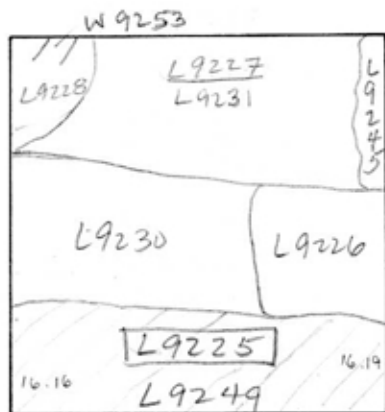


TEL DOR 19 88 field G square A.H.3.4 phase (in area): LOCUS 49225
 date opened 13/07/88 level 1064 date closed 13/07/88 level 10.16 floor level _____ type of locus
 STRATIFIED ACCUMULATION
 loci above L9224 loci below L9249 sealed by _____

graphic description



final locus no. _____ arch. unit / logical area _____ stage (in sq.) _____ final STRATUM _____

Summary:

Description: OPENED: CHANGE BELOW SURFACE SOIL (L9224) FROM LOOSE MEDIUM BROWN TO HARD DARK BROWN SOIL. DEFINITION/LIMITS: BOUNDED ON THE NORTH BY (L9230) AND (L9226); BOUNDED BY THE WEST EAST AND SOUTH BALKS. MATRIX: MEDIUM-PACKED DARK BROWN SOIL WITH MANY CLOUDS, LITTLE POTTERY, FEW ROOF TILE FRAGMENTS, SHELLS, SMALL ROCKS AND TESSERAE. APPEARS TO BE IDENTICAL TO MATRIX OF (L9227) AND (L9226).

CLOSED: (L9225) COMES DOWN UPON REDDISH SOIL WHICH APPEARS TO CONTAIN TWO-BRICK DEBRIS (L9249).

RELATION TO OTHER ELEMENTS: (L9225) APPEARS TO BE CONTINUATION OF (L9227) BOTH OF WHICH ARE CUT BY SUSPECTED ROBBERS TRENCH (L9230) AND (L9226).

* L9225 comes down on possible floor = fl 9229 in AH33. Excavator in AH34 observed the separation at floor level but not the floor. fl 9225? probably reached an upper portion of W9282 which was rolled out.

section

photos

- reason for opening
- definition / limits
- reason for closing
- relation to other elements
- working photos, nos:
- publication photos
- architects permission

written by A.M. ABRAMS checked by J. ZORN

