

TEL DOR

19 88

field

S

square

A#3.4

phase (in area):

LOCUS

CARD 2
L9231

date opened

15/07/88

level

1634

date closed

05/08/88

level

1514

floor level

type of locus

DEEP SANDY
FILL WITH WALL DEBRIS
ABOVE FLOOR
AND W9301, W9306,
W9290

loci above

L9230

L9227

L9226

L9245

L9294

loci below

above L9268

L8210

sealed by

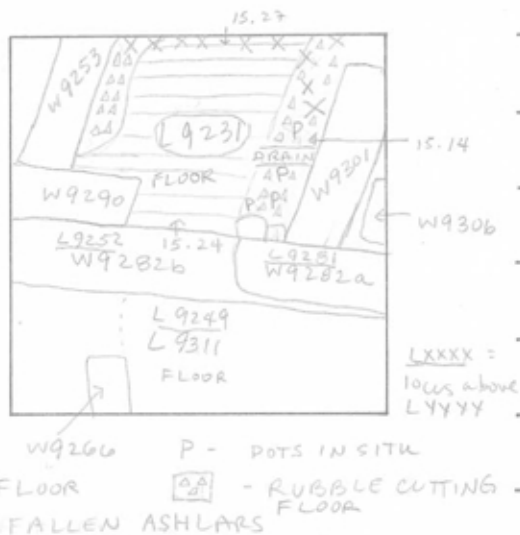
graphic description

final locus no.

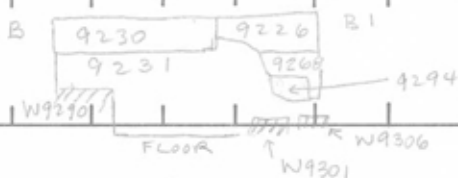
arch. unit / logical area

stage (in sq.)

final STRATUM



section

SEE
CARD 1

photos

- reason for opening
- definition / limits
- reason for closing
- relation to other elements
- working photos, nos:
- publication photos
- architects permission

written by A.M. ABRALDES checked by J. Zorn

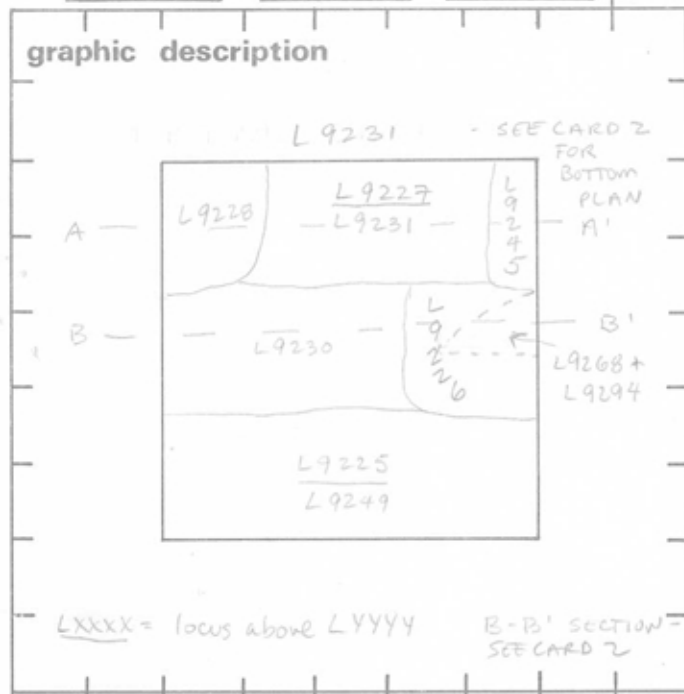
Summary:

Description:

RELATION TO OTHER ELEMENTS, CONTINUED FROM
CARD 1: OVERLIES AND REACHES
A PLASTERED PILLAR ATTACHED
TO W9282a,CONTINUES BELOW L9268, L9294, BOTH OF WHICH
ARE BELOW L9226. L9268 HAS THE SAME MATRIX
AS L9231: THEY APPEAR TO BELONG TO THE SAME FILL.
OVERLIES W9301, W9306.L9231 COMES DOWN UPON A HARD PLASTER FLOOR
WHICH REACHES W9290 AND W9282b AND
W9253 AT ITS SOUTHERN END.FLOOR IS CUT CA. 45m FROM THE EASTERN FACE
OF W9253* AND CA. 40m FROM THE WESTERN FACE
OF W9301.** W9290^{possibly} REPRESENTS THE THREE
LOWEST STEPS OF THE STAIRS LEADING INTOTHE ROOM FILLED IN BY L9231
PLASTER DRAIN, .45m WIDE, .15m LONG
REACHES FLOOR 9231 AND W9301^{Does not go through W9301}
POTTERY ABOVE FLOOR: LARGE QUANTITY OF
ROMAN LAMP FRAGMENTS INCLUDING 2
COMPLETE EXAMPLES; 4 FRAGMENTARY
VESSELS IN SITU, BETWEEN F9231
AND W9301Storage Jar, Casserole Dish, 2 bowls
* - floor reached W9253 which was subsequently robbed
** - reached W9301 whose west. face robbed

TEL DOR 19 88 field G square AH34 phase (in area): (CARD 1) LOCUS L9231

date opened 15/07/88 level 1634 date closed 05/08/88 level 1514 floor level _____ type of locus DEEP SANDY FILL WITH WALL DEBRIS, ABOVE FLOOR
 loci above L9227 L9245 loci below L8210 sealed by AND W9301, W9306, W9290
L9230 L9226 L9294 above L9268



final locus no. _____ arch. unit / logical area _____ stage (in sq.) _____ final STRATUM _____

Summary: _____

Description: OPENED: UPON DISCOVERY OF SOIL CHANGE BELOW L9227 FROM HARD DARK BROWN TO SANDY LIGHT BROWN.

DEFINITION/LIMITS: BOUNDED BY NORTH BANK; BOUNDED ON THE WEST BY L9228, ON THE EAST BY L9245, ON THE SOUTH BY L9230, L9226, CONTINUES UNDER ALL THE ABOVE LOCI, AS WELL AS L9268 AND L9294, BOTH OF WHICH ARE BELOW L9226

MATRIX: SANDY LIGHT BROWN SOIL WITH MANY SHELLS, LARGE ROCKS, CEMENT DEBRIS, TUMBLE OF ASHLARS, MUDBRICK DEBRIS, ORANGE-RED CLAY ABOVE W9301 AND W9306, ASH DEPOSITS ABOVE FLOOR.

CLOSED: UPON REACHING FLOOR AND W9301, W9306, W9290.

- photos
- reason for opening
 - definition / limits
 - reason for closing
 - relation to other elements
 - working photos, nos: 4
 - publication photos
 - architects permission
- written by A.M. ABRALDES checked by J. ZORN



RELATION TO OTHER ELEMENTS: AT ITS OPENING, L9231 IS CUT BY ROBBER TRENCHES, L9228 TO THE WEST, L9245 TO THE EAST, L9230, L9226 TO THE SOUTH IT THEN CONTINUES BELOW THE ABOVE LOCI; REACHES W9253 BELOW L9228; REACHES ROBBER TRENCH L9252 AND W9202b BELOW L9252; L9231 OVERLIES AND REACHES W9290 and CONTINUED ON CARD 2

LOCUS

L19231

BASKET LIST

CARD 1

| basket no. | level | str def | cont | R + | periods | comments |
|------------|-------|---------|------|-------|---------|--|
| B92393 | 1583 | 03 | 01 | 0 | 02 | POTTERY DISCARDED (02 - some earlier) |
| B92394 | 1583 | 03 | 11 | | | BONES |
| B92399 | 1583 | 03 | 04 | | | BRONZE NAIL |
| B92419 | 1564 | 03 | 01 | 2 | 02 | INDICATIVES SAVED |
| B92424 | 1564 | 03 | 11 | | | BONES |
| B92464 | 1558 | 03 | 01 | 2 | 02 | INDICATIVES SAVED |
| B92470 | 1558 | 03 | 11 | | | BONES |
| B92483 | 1534 | 03 | 01 | 0 | 02 | POTTERY DISCARDED |
| B92484 | 1534 | 03 | 01 | 2 | 02 | INDICATIVES SAVED |
| B92489 | 1534 | 03 | 06 | | | ARM OF TC FIGURINE? |
| B92500 | 1534 | 03 | 11 | | | BONES |
| B92502 | 1548 | 03 | 16 | | | LEFT HAND FROM MARBLE STATUE (LIFE-SIZED) |
| B92600 | | 03 | 01 | 05-02 | | POTTERY DISCARDED |
| B92625 | 1526 | 03 | 01 | 2 | | INDICATIVES SAVED |
| B92647 | 1526 | 03 | 01 | R | 02 | RESTORATION |
| B92648 | 1526 | 03 | 09 | | | TCLOOM WEIGHT |
| B92652 | 1526 | 03 | 11 | | | BONES |
| B92660 | 1526 | 03 | 01 | 2 | | INDICATIVES SAVED + R SHERDS |
| B92666 | 1526 | 03 | 02 | R | | RESTORATION |
| B92657 | 1526 | 03 | 10 | | | BURNED MATERIAL FROM STORAGE JAR |
| B92667 | 1526 | 03 | 10 | | | BOWL WITH MATERIAL FOR ANALYSIS |
| B92669 | 1526 | 03 | 13 | | | GLASS |
| B92670 | 1526 | 03 | 11 | | | BONES |
| B92673 | 1526 | 03 | 10 | | | YELLOW PIGMENT |
| B92677 | 1526 | 03 | 01 | 0 | 02 | POTTERY (R) DISCARDED |
| B92684 | 1526 | 03 | 05 | | | IRON NAILS (3) |
| B92685 | 1526 | 09 | 01 | 2 | 02 | INDICATIVES SAVED |
| B92689 | 1538 | 09 | 17 | | | ROMAN TC LAMP WITH 2 PUTI (NO NOZZLE) |
| B92690 | 1541 | 09 | 17 | | | ROMAN TC LAMP - COMPLETE |
| B92693 | 1534 | 09 | 12 | | | BRONZE COIN |
| B92691 | 1533 | 09 | 03 | | | COOKING POT (FRAG. WITH SHERDS) |
| B92694 | 1526 | 09 | 11 | | | BONES |
| B92700 | 1524 | 09 | 01 | 2 | 02 | INDICATIVES & LAMP FRAGMENTS (R) SAVED (5) |
| B92701 | 1524 | 09 | 13 | | | GLASS |
| B92702 | 1524 | 09 | 11 | | | BONES |