

TEL DOR

19 88.

field

G

square

AL34/AL35.

phase (in area):

LOCUS W9232.

date opened

13/07/88

level

16.60

date closed

11/08/88

level

floor level

type of locus

WALL.

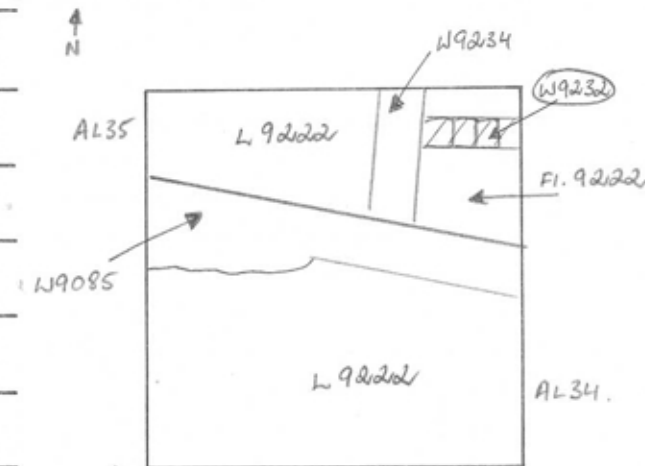
loci above

9222.

loci below

sealed by

graphic description



final locus no.

arch. unit / logical area

stage (in sq.)

final STRATUM

Summary:

Description:

OPEN | CAME DOWN ON W. 9232 below L 9222

MATRIX | KURKAR HEADER WALL.

LIMITS | BOUNDED NORTH BY unnumbered fill WEST BY W9234,  
SOUTH BY FL9222 AND EAST BY THE BULK.

CLOSING | END OF SEASON ; LOCUS NOT CLOSED.

RELATIONS | W9232 REACHES W9234 AND IS REACHED  
BY FL9222. Cuts unnumbered fill to North.

section

photos

- reason for opening
- definition / limits
- reason for closing
- relation to other elements
- working photos, nos:
- publication photos 41046.
- architects permission

written by J.M.I.checked by J. Zorn