

TEL DOR

19 88

field

G

square

AL34/AL35

phase (in area):

LOCUS W9234

date opened

13/07/88

level

16.59

date closed

\_\_\_/\_\_\_/\_\_\_

level

floor level

type of locus

WALL.

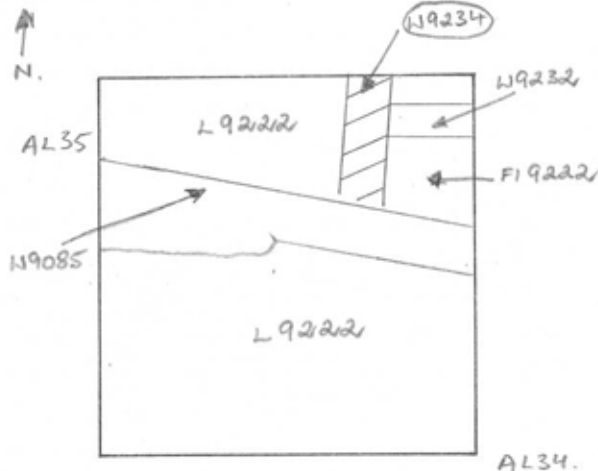
loci above

9.2.2.2.

loci below

sealed by

graphic description



final locus no.

arch. unit / logical area

stage (in sq.)

final STRATUM

Summary:

Description:

OPEN | CAME DOWN ON (W9234) BELOW (L9222)

MATRIX | KURKAR BLOCKS.

LIMITS | BOUNDED TO THE NORTH BY THE BANK, TO  
THE SOUTH BY (W9085), WEST BY (unnumbered fill) AND  
EAST BY (W9232) AND (FL9222)

CLOSING | END OF SEASON; LOCUS NOT CLOSED.

RELATIONS | (W9234) IS CUT BY (W9085), (W9232) AND  
(FL9222) BOTH REACH (W9234). (W9234)  
ALSO CUTS unnumbered fills to East and North

section

photos

- reason for opening
- definition / limits
- reason for closing
- relation to other elements
- working photos, nos:
- publication photos 41046.
- architects permission

written by JMY.

checked by JZorn