

TEL DOR

1988

field

G

square

AK.3.3

phase (in area):

2

LOCUS W9243

date opened

15/07/88

level

15.97

date closed

21/07/88

level

15.66

floor level

type of locus

Header wall

loci above

L9237

loci below

L9283 W9147

sealed by

graphic description

final locus no.

arch. unit / logical area

stage (in sq.)

final STRATUM

Summary:

Description:

[Opened]: Excavation revealed presence of header wall [9243] below [L9237].

[Definition/Limits]: [W9243] is bounded on the N by the paving stones of [L9237], and extends through the S bank. [W9243] splits the closed locus [9237] into [L9242] to the W, and [L9244] to the E.

[Reason for Closing]: [W9243] was removed.

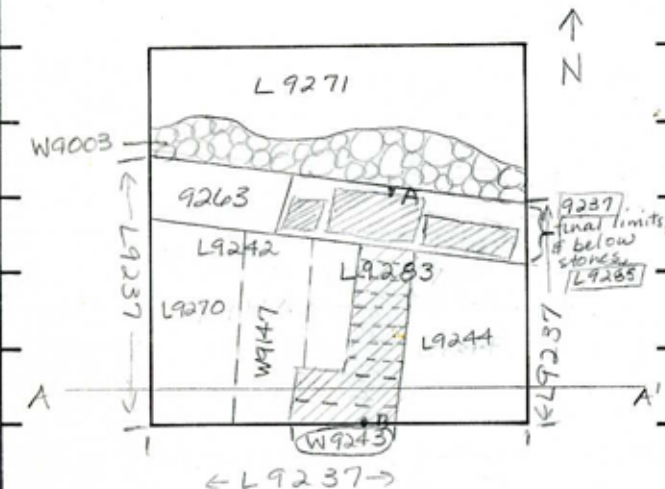
Note: One large header stone of [W9243] remains in place, partially imbedded in the S bank.

[Relation to Other Elements]: [W9243] cuts [L9242] & [L9244]. The paving stones of [L9237] do not rest upon those of [W9243], but are larger than those of [W9243] &

are sunk at a deeper level than those of [L9243] therefore the stones of [L9237] may cut [L9243]. Flats above [W9147].

Note: The 2 Southernmost blocks of [W9243] are twice the width of the other stones. ← Is D2: Also, they are flat liers (= part of pavement)

[Matrix]: Header stones 9000



section



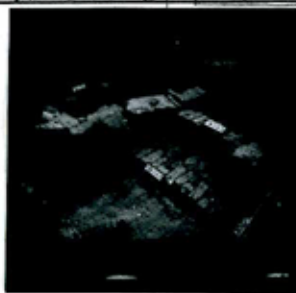
photos

original  
Site no. L9237  
Header Wall W9243

- reason for opening
- definition / limits
- reason for closing
- relation to other elements
- working photos, nos: 41163
- publication photos
- architects permission

written by A. Capel

checked by J. Zorn









TEL DOR

1959

field

G

square

A.K.3.1

phase (in area):

LOCUS W19.24.3

date opened

03/08/88

level

16.05

date closed

24/07/89

level

15.80

floor level

type of locus

HEADER WALL

loci above

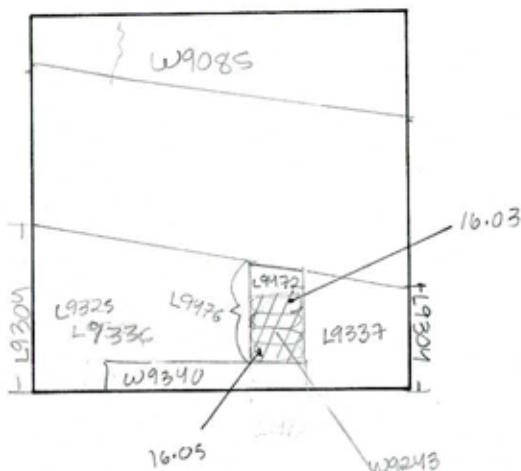
L9.3.0.4

loci below

L9.4.76

sealed by

graphic description



section

final locus no.

arch. unit / logical area

stage (in sq.)

final STRATUM

Summary:

Description:

REASON FOR OPENING: EXCAVATION REVEALED HEADER WALL [W9243].

MATRIX: 4 HEADER STONES. AVG SIZE: 40 CM LENGTH, 19 CM WIDTH, 25 CM HT. SITTING ON SHELL &amp; KURKAR.

DEFINITION/LIMITS: BOUNDED ON N. BY [L9476], ON E. BY [L9337], ON S. BY [W9340] ON W. BY [L9325], [L9336] AND [W9340]

REASON FOR CLOSING: REMOVED WALL [W9243].

RELATIONS: COVERED BY [L9304] PARTIALLY SEALS [L9476] CUT BY [L9472] AND [W9340]. CUTS [L9337], [L9325] &amp; [L9336] ARE CUT BY [W9243]

photos

- reason for opening
- definition / limits
- reason for closing
- relation to other elements
- working photos, nos:
- publication photos
- architects permission

written by W. SWANSONchecked by J Zorn