

TEL DOR

19 88

field

G

square

A132

phase (in area):

LOCUS L19259

date opened

19/07/88

level

L423

date closed

27/07/88

level

L392

floor level

type of locus

MUDBRICK FILL + RUBBLE

loci above

L9235

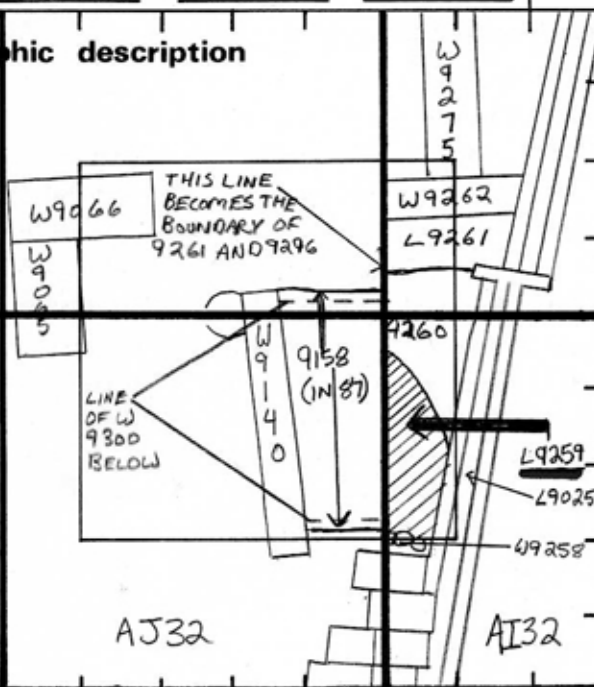
loci below

L9296

L9295

sealed by

graphic description



final locus no.

arch. unit / logical area

stage (in sq.)

final STRATUM

Summary:

Description:

OPENED PIT 9260 SEEN TO CUT 9235 + 9236 ABOVE. 9259 DEFINED AS MATERIAL SOUTH OF PIT AND NORTH OF W9258.

DEFINITION / LIMITS: AREA OF MUDBRICK SOUTH OF L9260, WEST OF THE PEDESTAL SUPPORTING 9025 AND EAST OF L9158 (EXCAVATED IN '87).

MATRIX: MUDBRICK MATERIAL WITH SOME SMALL RUBBLE STONES.

REASON FOR CLOSING PIT 9260 ENDED. L9259 + L9260 COLLAPSED INTO L9296 AND L9295.

RELATION TO OTHER ELEMENTS: L9259 IS CUT BY L9260 AND THE FIRST COURSE OF STONES OF ILAN'S SUMP. THIS LOCUS PROBABLY REPRESENTS A CONTINUATION

OF L9158 (EXCAVATED IN '87) WHICH COULD BE FALL FROM W9140, OR EQUALLY POSSIBLE FALL FROM W9262. QUITE PROBABLY A CONTINUATION OF L9235 ABOVE.

photos

- reason for opening
- definition / limits
- reason for closing
- relation to other elements
- working photos, nos:
- publication photos
- architects permission

written by D. C. STANFILL checked by _____

