

TEL DOR

19 88

field

G

square

A.H.3.4

phase (in area):

LOCUS

CARD 18 OF 5

W 926.6

date opened

03/09/88

level

L532

date closed

12/08/88

level

1508

floor level

type of locus

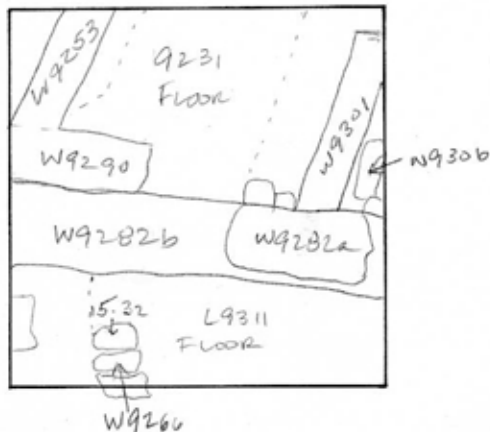
loci above

L9311

loci below

sealed by

graphic description



section

photos

- reason for opening
- definition / limits
- reason for closing
- relation to other elements
- working photos, nos:
- publication photos
- architects permission

written by A.M. ABRALDES checked by J. Zorn

final locus no.

arch. unit / logical area

stage (in sq.)

final STRATUM

Summary:

Description:

OPENED: UPON REACHING [W9266] BELOW [L9311].

DEFINITION/LIMITS: EXTENDS SOUTHWARD INTO SQUARE [AH33]; WESTERN FACE IS CA. .80m EAST OF WEST BANK, BOUNDED ON WEST, NORTH AND EAST BY [L9311] ACCUMULATION ABOVE FLOOR [9311].

MATRIX: SINGLE COURSE OF ROUGH-CUT KURKAR HEADERS.

CLOSED: NOT CLOSED, END OF SEASON. APPROXIMATE DIMENSIONS: .50m LENGTH, .45m WIDTH, .30m HEIGHT

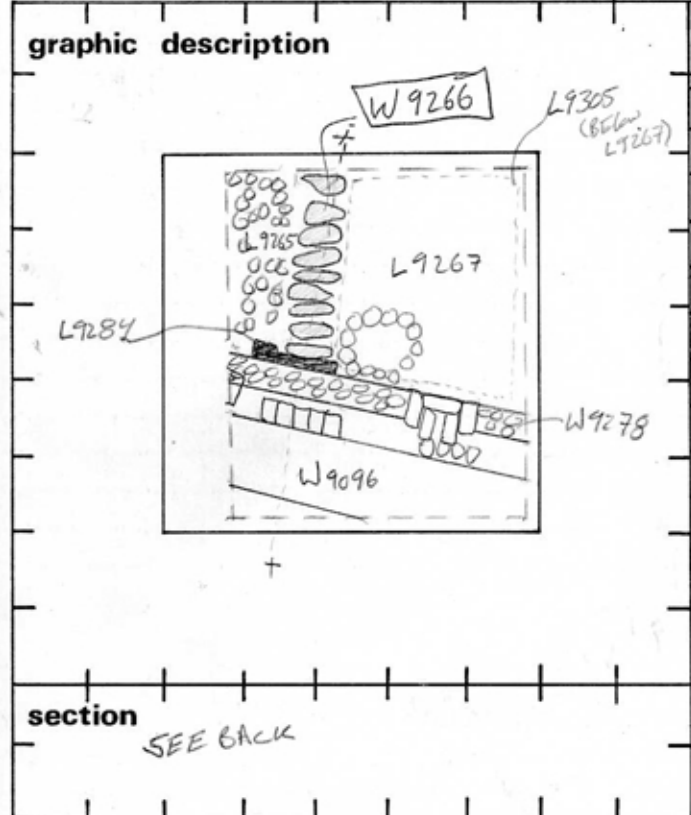
RELATION TO OTHER ELEMENTS: FLOOR [9311] APPEARS TO RUN UNDER [W9266]

[W9266] TERMINATES CA. .80m SOUTH OF SOUTH FACE OF [W9282b] [W9266] AND [W9282b] ARE CONTEMPORARY. MATERIAL OF [L9311] WHICH OVERLIES [W9266] AND FLOOR [9311] REACHING [W9282b] IS IRON AGE.

*[L9311] WAS NOT CLOSED AS IT SHOULD HAVE BEEN WHEN [W9266] WAS DEFINED

TEL DOR 19 88 field 6 square A.H.3.3 phase (in area): CARDIA OF S1
 date opened 20/07/88 level 1545 date closed 01/08/88 level -1486 floor level _____ type of locus WALL
 LOCUS W1926.6

loci above L9254 loci below NONE AT PRESENT sealed by _____



final locus no.	arch. unit / logical area	stage (in sq.)	final STRATUM

Summary:

Description: REASON FOR OPENING: CAME DOWN ON WALL W9266 WHILE EXCAVATING L9254.

DEFINITION AND LIMITS: EXTENDS NORTH FROM L9284 (FOUNDATION MATERIAL OF W9278), INTO NORTH BAULK AND AH34 1.2 M. EAST OF WEST BAULK.

MATRIX: AT LEAST TWO COURSES OF ROUGH CUT KURKAR HEADERS.*

REASON FOR CLOSING: END OF SEASON, NOT CLOSED

RELATION TO OTHER ELEMENTS: CUT BY L9284, WHICH IS FOUNDATION TRENCH FOR W9278. L9265 AND L9267 ARE BOTH FILLS REACHING THE WALL. RUBBLE ^{below} IN L9265 DOES NOT REACH THE WALL AT THE END OF SEASON LEVELS. LOWEST COURSE OF WALL UNEXPOSED AT END OF SEASON. L9305 IS ALSO A FILL REACHING THE WALL

* SIZES VARY, AROUND 50CM WIDE X 30CM HIGH BY 20CM LONG.

* AS OF '91 SEASON - EXTENDS N. TO ADDIS QUIT? BIL W9282 IN AH34 AND EXTENDS S. AND IS CUT BY W9096 - SE CARIA - CLR

section SEE BACK

photos

- reason for opening
- definition / limits
- reason for closing
- relation to other elements
- working photos, nos: 411-68
- publication photos
- architects permission

written by R. LINDSTROM checked by J Zorn

Locus W9266a	Dor 19 9.1	Fld A	Sq A133/1133	Loc. type WALL card 2 of 5
Open 0.4/07/9.1	High at 1.5 4.5	Low at 1.4 8.6	Seals: _____	
Close 0.8/08/9.1	1.5 4.5	1.4 8.6	Sealed by: _____	
Floor: type _____	_____	_____	Loci L9254 9.711 9.278 9.284	
Length 4.5	Width 0.5	Vol _____	above _____	
Value _____	Remove _____	Drawn? YES	below _____	
Photo #(1) 70621	Photo #(2) 70623			
Written by: CWB/BS	Checked by: JIRZ			

Unit _____	Phase _____	Stage _____	Stratum _____	PoM _____
-------------------	--------------------	--------------------	----------------------	------------------

Summary _____

Opened: PRESENT AT BEGINNING OF 191 SEASON - CAME DOWN ON FROM L9254 IN '59 SEASON.

Limits (N) BOUNDED BY L9282

(S) BOUNDED BY L9096

(E) BOUNDED BY L9657 AND L9658 AND L9735

(W) L9637, L9687, L9693, L9699, L9722, L9734 and W9729.

Closed: END OF SEASON. DID NOT REMOVE.

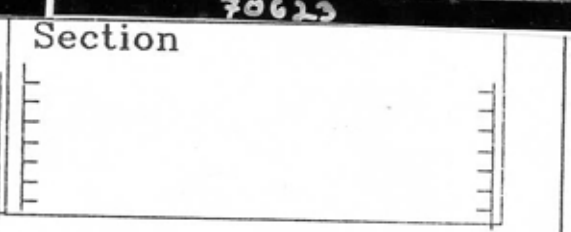
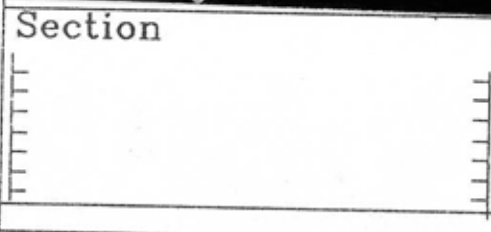
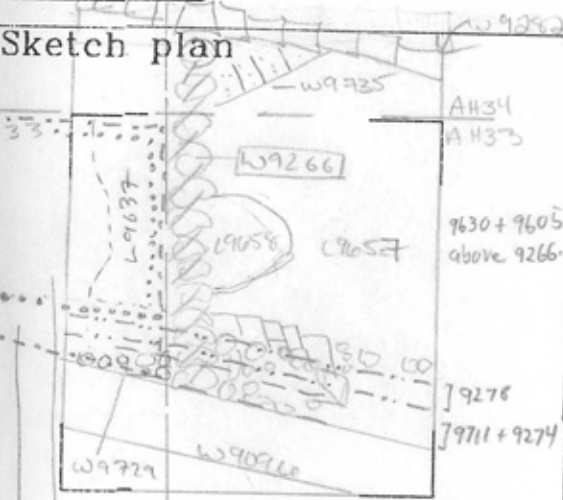
Matrix: CONSISTS OF A LIMESTONE WALL 4 COURSES HIGH OF VARIOUS SIZED ROCKS RANGE FROM APPROXIMATELY 50cm X 30cm X 20cm. WALL LENGTH IS 4.5 METERS LONG. Bottom course of wall has not yet been reached.

Relations: L9637, winter wash reaches the w. face of W9266. L9687, L9693, L9699, L9722 and L9734, all mud-brick loci, reach w. face of W9266. W9729 abuts S. end of w. face of W9266, forming a corner. W9266 runs parallel to W9684, with which it probably forms a room. W9729 is probably the S. wall to this room. Erosional wash 9605 reaches 9266 on 9266's E. face. 9630 and 9657 also reach 9266 on the E. Taken 9658 was built up against, and so reaches 9266. The floor of 9657 may well reach 9266, but this is uncertain because the floor could not be traced to the wall. W9735 (mudbrick) may form a corner with 9266, thus reaching it, or abutting it, E 9657 reaches W9735 and likely also W9266. This is an important connection. It cannot certain be said that 9266 does not cut 9735, only a narrow area of this juncture is exposed. That they form a corner seems more likely. L9711 (sealed below W9274) covered the S. end of 9266. W9278 covered and sealed the area just N. of 9711.

Additional Observations/Value: IRON AGE WALL - VERY IMPORTANT

LOCUS
 W 92661

Sketch plan



Locus W 9266	Dor 1992	Fld 6	Sq AH33	Loc. type Wall Card 3 of 5
Open 14/07/92	High 15.45	at C	Low 14.86	at N
Close 18/08/92	High 14.00	at N	Low 14.00	at S
Floor: type	Length 4.5	Width 0.5	Vol	Drawn? YEE
Value	Remove			
Photo #(1) See Isra	Photo #(2)			Seals:
Written by: RSS	Checked by: JRZ			Sealed by:
				Locl
				above
				Locl
				below

Unit	Phase	Stage	Stratum	PoM
Summary				

Opened: continued excavation against W. face of W9266

Limits (N) See previous season cards

(S) See previous season cards

(E) See previous season cards

(W) L9759, L9817 and W9845 - see also previous season cards

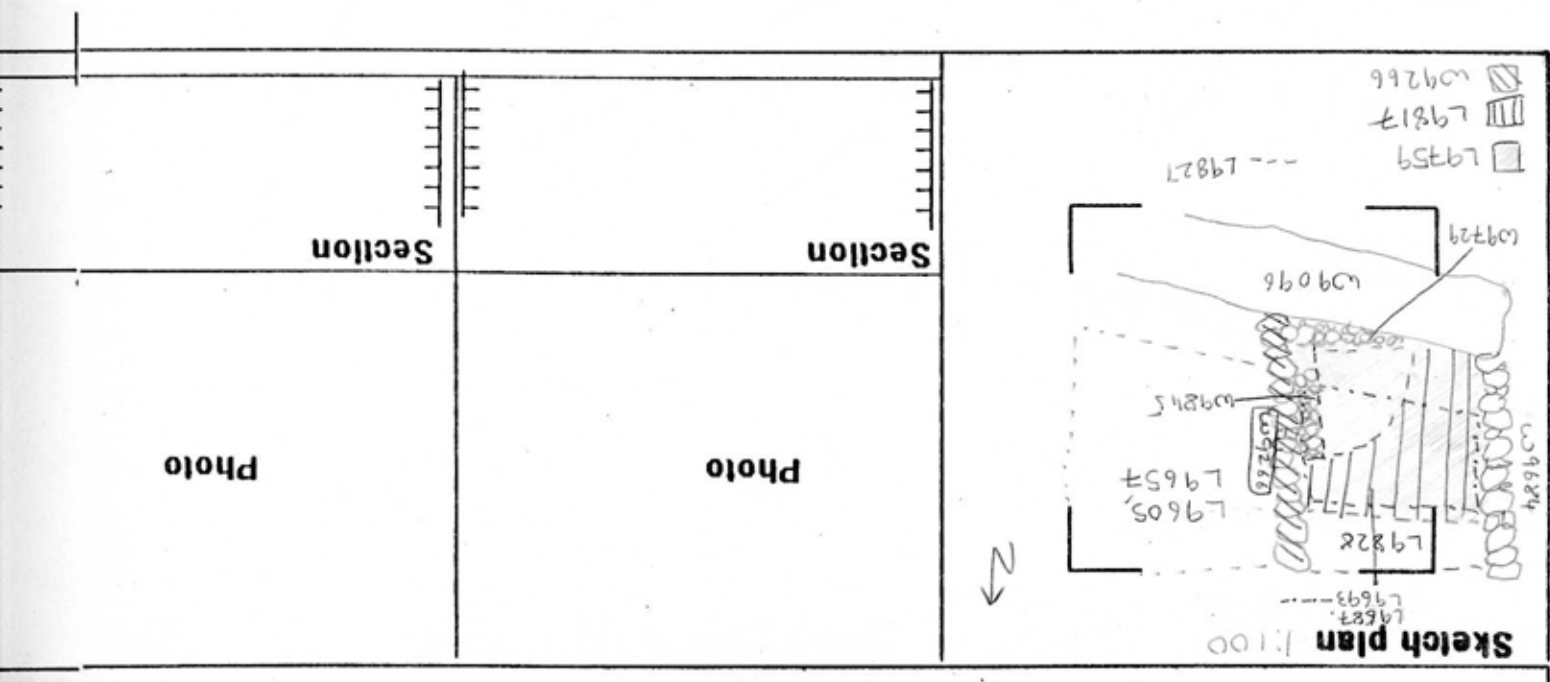
Closed: Not closed - End of season.

Matrix: See previous season cards. At least two construction phases - Lower phase - double and triple head sized boulders - upper phase - head sized boulders. Similar W9684. Number of courses not counted this season.

Relations: L9759 reaches the W. face of W9266. The floor is L9759 appears definitely related to W9266, as does the lower floor in L9817, though neither reaches W9266. L9817 reaches the W. face of W9266. W9845 abuts the W. face of W9266 - for further relations see 1992 card for W9845.

W9266 appears to be a two phase wall. The earlier phase relates to floors 9817 and 9759 to the W. and floor 9657 to the E. The later phase probably relates to floors 9687 and 9693 to the W. and floor 9605 to the E. An even later phase may relate to floor 9828 to the W. There is no relation, yet, to multiple Floor/Installation/Wall? L9827.

Additional Observations/Value: Still an Iron Age wall - still very important.



(continued)

Do under AH34 w. Cheryl

Locus WJ 9266	Dor 19 92	Fld G	Sq AH34/AH34	Loc. type WALL (CONTINUATION)
Open 1.6.07.92	High 15.45	at C	Low 15.36	at N
Close 1.1.08.92	High 14.21	at N	Low 14.21	at S
Floor: type	Width	Vol	Drawn? YES	Seals: _____
Length	Remove	Drawn? YES		Sealed by: _____
Value				Locl _____
Photo #(1) 87138	Photo #(2) 87133			above _____
Written by: SFB	Checked by: J.R.Z.			Locl _____
				below _____

Unit	Phase	Stage	Stratum	PoM
Summary				

Opened: CONTINUED DOWN ON THE WEST SIDE OF THE NORTH END OF W9266 IN THE 1992 SEASON

Limits (N) GAP S. OF W9282

(S) CONTINUES INTO AH33

(E) NOT EXCAVATED IN 1992

(W) L9769, L9771, L9811, L9838, W9825

Closed: NOT CLOSED, ENDED SEASON AT CLOSING OF L9838

Matrix: ROUGH-CUT KURKAR HEADERS CONTINUED DOWN

Relations:

WEST: L9769, L9771, L9811, & L9838 ALL REACH W9266. THE EAST END OF W9825 MEETS THE NORTH END OF W9266. THE TYPE OF JOINT AT THE CORNER IS NOT CLEAR. ONLY THE TOP COURSE OF W9825 HAS BEEN EXCAVATED THUS FAR.

THE TOP ELEVATION OF W9825 IS APPROX. 14.60. IT MAY HAVE ORIGINALLY REACHED HEIGHT OF W9266 AND LATER BEEN ROBBED OUT. IF LARGE BOULDER ABOVE EAST END OF W9825 PROVES TO BE LINKED WITH THAT WALL'S MATRIX, THE W9266/W9825/W9684 COMPLEX WILL HAVE BEEN SHOWN TO HAVE EXISTED TO AT LEAST THE HEIGHT OF THE TOP OF W9266

Note: W9825 = W9211

Additional Observations/Value: W9266 & W9684 ARE THE TALLEST WALLS IN THIS AREA. THEY SEEM TO HAVE BEEN IN USE DURING MOST OF THE IRON AGE.

Locus W9266	Dor 1993	Fld G	Sq A#33	Loc. type WALL CARD #4 ^{of 5} instead
Open 02/07/93	Date	High at 15.45 C	Low at 14.86 N	Seals: _____
Close 06/08/93		13.60 N	13.48 S	Sealed by: _____
Floor: type _____		_____	_____	Locl SEE PREVIOUS SEASONS CARDS
Length 4.5	Width 0.5	Vol _____		above _____
Value _____	Remove _____	Drawn? YES		below _____
Photo #(1) _____		Photo #(2) _____		Locl UNKNOWN
Written by: SSR		Checked by: JRZ		

Unit _____	Phase _____	Stage _____	Stratum _____	PoM _____
-------------------	--------------------	--------------------	----------------------	------------------

Summary _____

Opened: CONTINUED AT BEGINNING OF SEASON

Limits (N) SEE PREVIOUS SEASONS' CARDS
(S) SEE PREVIOUS SEASONS' CARDS
(E) 1985, 1986, 1987, 1990, 1991 AND W990 ~ ALSO SEE PREVIOUS SEASONS' CARDS
(W) 1985, 1986, 1993, 1999, 1994, AND W945 - ALSO, SEE PREVIOUS SEASONS' CARDS
Closed: NOT CLOSED; END OF SEASON

Matrix: AT LEAST TWO PHASES OF CONSTRUCTION OF VERY LARGE FIELDSTONES. THE UPPER PHASE CONSISTS OF FIELDSTONES RANGING FROM DOUBLE FIST TO TRIPLE-HEAD SIZE. THOSE OF THE LOWER PHASE ARE GENERALLY LARGER, WITH MASSIVE BOULDERS SURROUNDED BY HEAD-SIZE STONES. THERE ARE 8 COURSES SO FAR AND BOTTOM COURSE HASN'T BEEN FOUND
Relations: YES

RELATIONS: FROM THE EAST, W9266 IS BUTTED BY W990 AND MUDBRICK W975. FROM THE WEST, IT IS BUTTED BY W9211 AND W9845. THE RELATIONSHIP BETWEEN W9266 AND W9729 REMAINS UNCLEAR. THE REMOVAL OF W9096 AND THE FILL BELOW WOULD EXPOSE THE SOUTH SIDE OF THIS ARRANGEMENT. IT IS MOST LIKELY THAT BOTH PHASES OF W9729 ABUT W9266 BECAUSE THE TWO WALLS CONNECT WHERE THE TWO PHASES OF W9266 MEET. THE TABUN, L9658 AND L9898, DOES NOT REACH TO W9266. THE SECOND TABUN, L9880 AND L9899, DOES NOT REACH TO W9266 EITHER.
 FROM THE EAST, W9266 IS REACHED BY L9865, L9896, L/F9897, L9950 AND L9951. FROM THE WEST IT IS REACHED BY L9855, L/F9876, L/F9937, L9949, AND L9994. F9876 ALSO REACHES W9211, W9684, W9729, AND W9845. F9896 REACHED W9735 AS WELL AS W9266

Additional Observations/Value: VERY VALUABLE IR WALL, WHICH FORMS THE EAST WALL OF A 4 WALL ROOM AND THE WEST WALL OF A COURTYARD.

Locus W/ 192166	Dor 1997	Fld G ₁	Sq AH33-AH34	Loc. type <u>CARD 5 OF 5</u> WALL
Open	Date 013/07/97	High at 15.510 S ₁	Low at 15.018 N ₁	Seals: <u> </u> <u> </u> <u> </u> <u> </u>
Close	12/08/97	13.418 S ₁	113.319 N ₁	Sealed by: <u> </u> <u> </u> <u> </u> <u> </u>
Floor: type				Loci ^{SEE PREVIOUS LOCUS CARDS} <u> </u> <u> </u> <u> </u> <u> </u>
Length 4.5	Width 0.6	Vol		above <u> </u> <u> </u> <u> </u> <u> </u>
Value <u>11</u>	Remove <u>1/1/1</u>	Drawn? <u>YES</u>		Loci <u>UNEXCAVATED</u> <u> </u> <u> </u> <u> </u> <u> </u>
Photo #(1) 166297	Photo #(2) 166294			below <u> </u> <u> </u> <u> </u> <u> </u>
Written by: <u>MAS</u>	Checked by: <u>JRZ</u>			

Unit	Phase	Stage	Stratum	PoM
------	-------	-------	---------	-----

Summary

Opened: SEE PREVIOUS LOCUS CARDS

Limits (N) SEE PREVIOUS LOCUS CARDS

(S) BALK

(E) SEE PREVIOUS LOCUS CARDS AND L18209, L9898, L9899, L18304, L18278, L18247

(W) SEE PREVIOUS LOCUS CARDS

Closed: NOT CLOSED; END OF SEASON.

Matrix: APPROXIMATELY SIX COURSES OF UNIFORM WIDTH WITH AT LEAST TWO PHASES OF CONSTRUCTION.

THE LATER PHASE IS ABOUT THREE IRREGULAR COURSES WITH 20-40CM STONES WITH MANY IRREGULARLY PLACED

10-20 CM CHINKING STONES. THE NEXT TWO COURSES ARE MUTHA ROCKS ABOUT 50CM TALL AND RANGING

50-80CM WIDE. THERE ARE FEWER CHINKING STONES IN THESE TWO COURSES. A SIXTH COURSE IS BEGINNING TO SHOW WITH

RELATIONS: MATRIX CONTINUED; HAS ROCKS ABOUT THE SIZE OF THOSE IN THE EARLIER PHASE - 70-80CM LONG.

SEE PREVIOUS LOCUS CARDS.

E: W9266 IS NOT REACHED BY TABUNS L9898 AND L9899. W9266 IS REACHED BY L18209, L18247, L18278

AND L18304 BUT NOT BY F18278. F18278 DOES SEEM TO DIVE TO THE WEST SO A CONTINUATION OF

F18278 MAY REACH W9266 IN L18304. ONLY FUTURE EXCAVATION WILL TELL. F18209 AND L18247

PROBABLY REACHED W9266 BUT THIS WAS NOT OBSERVED DURING EXCAVATION.

Additional Observations/Value: HIGH VALUE IRON AGE WALL.



167497

18304 ↓ V18278

LOCUS
W 19266

Sketch plan



- ▨ = W9266
- ▨ = L18209, L18247, L18278
- ▨ = F18278
- ▨ = L18304



167504A



167495



167493



167492



167500



167494



167501



167498