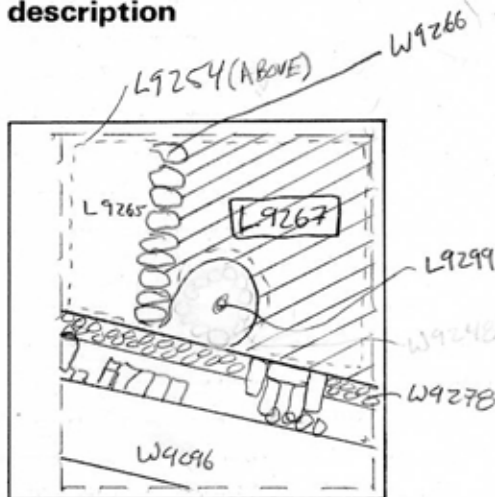


TEL DOR 19 88 field 6 square A.H.33 phase (in area): LOCUS L19.26.7

date opened 20/07/88 level 1538 date closed 28/07/88 level 1509 floor level type of locus Fill

loci above L9254 loci below L9305 sealed by

graphic description



final locus no.	arch. unit / logical area	stage (in sq.)	final STRATUM

Summary:

Description: REASON FOR OPENING: [L9254] CAME DOWN ON [W9266] AND WAS SPLIT INTO [L9265] AND [L9267].

DEFINITION/LIMITS: BOUNDED IN SOUTH BY [W9278] AND SUMP PEDESTAL [L9299]. BOUNDED ON WEST BY [W9266]; bounded by NORTH AND EAST Baulks.

REASON FOR CLOSING: AFTER REMOVAL OF [L9299], SOIL IN THE TWO LOCI WAS IDENTICAL, AND MUCH POTTERY WAS EVIDENT. THESE LOCI WERE COMBINED INTO [L9305].

MATRIX: LT. BROWN SANDY FILL WITH MUCH CHARCOAL AND ASH.

RELATION TO OTHER ELEMENTS: CUT BY [W9278], AND PROBABLY CONTAMINATED BY ITS FOUNDATION TRENCH. REACHES [W9266]. REACHES [L9299] WHICH WAS LEFT AS A PEDESTAL FOR [W9248]. THE MATRIX OF [L9299] AND [L9267] WERE IDENTICAL. THE SAME FILL MATERIAL IS ALSO PRESENT

section

photos

- reason for opening
- definition / limits
- reason for closing
- relation to other elements
- working photos, nos:
- publication photos
- architects permission

written by R. LINDSTROM checked by J. Zorn

IN A.H.34, [L9311]

