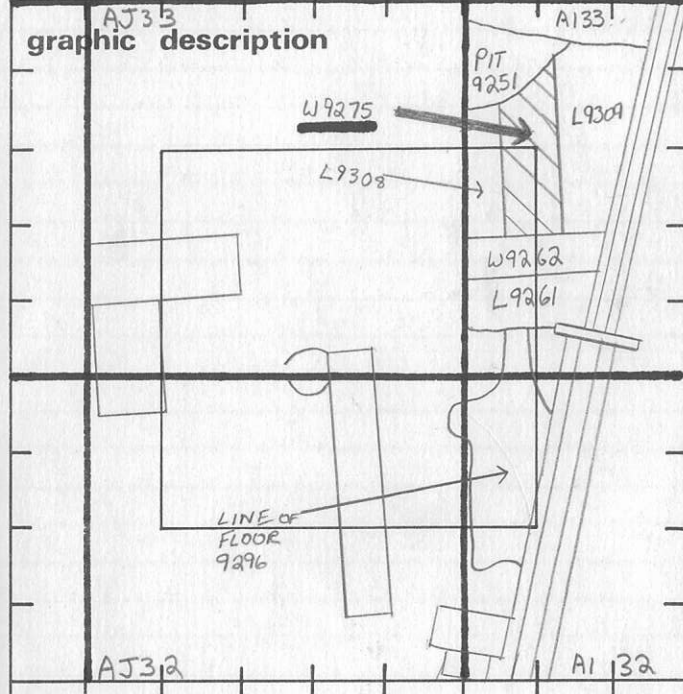


TEL DOR 19 88 field G square A.I.3.3 phase (in area): LOCUS W192.75

date opened 19/07/88 level 144.6 date closed 12/08/88 level 139.8 floor level _____ type of locus WALL (MUDBRICK)

loci above 91.8.3 91.9.3 loci below _____ sealed by _____



final locus no.	arch. unit / logical area	stage (in sq.)	final STRATUM

Summary:

Description: OPENED UPON DEFINITION OF A MUDBRICK WALL DEFINED BY REMAINS OF REED MATTING LAYED BETWEEN LAYERS OF MUDBRICKS. WALL LIES UNDER LOCI 9183, 9193, 9192, 9194 EXCAVATED IN '87.

DEFINITION/LIMITS: MUDBRICK WALL DEFINED ON THE SOUTH BY W19262'S NORTH FACE, ON THE WEST BY L9308, ON THE EAST BY L9309 AND ON THE NORTH BY L9251

MATRIX A MUDBRICK WALL 70 cms WIDE COMPOSED OF BRICKS 30x40 cms. WALL PRESERVED FOR 2.5 METERS, OVER WHICH A COVER OF REEDS WAS FOUND SEPARATING THE TWO LAYERS OF BRICKS.

section

REASON FOR CLOSING END OF SEASON - NOT CLOSED

photos

- reason for opening
- definition / limits
- reason for closing
- relation to other elements
- working photos, nos:
- publication photos 41280
- architects permission

written by D.C. STANFELL checked by _____



RELATION TO OTHER ELEMENTS W19275 REACHES W19262 ON W19262'S NORTHERN FACE. L9308 REACHES W19275 ALONG W19275'S WEST FACE. L9309 REACHES W19275 ALONG W19275'S EAST FACE. PIT 9251 CUTS W19275 ON THE NORTH. UPON REMOVAL OF L9332 ON THE WEST SIDE OF W19275 3 COURSES OF MUDBRICKS IN SITU WERE VISIBLE

Entered

Locus W9275	Dor 1992	Fld G	Sq A133	Loc. type Mudbrick wall Card 2
Open 14/07/92	High 14.21	at S	Low 14.06	at N
Close 14/08/92	High 13.31	at S	Low 13.32	at N
Floor: type	Width 0.7	Remove / / /	Vol	Drawn? YES
Length 1.2	Value 1	Remove / / /	Drawn? YES	Seals: _____
Photo # (1) See Isra	Photo # (2)	Locl above	Locl below	Sealed by: _____
Written by: R.S.S	Checked by: J.R.Z	Locl above	Locl below	_____

Unit	Phase	Stage	Stratum	PoM
-------------	--------------	--------------	----------------	------------

Summary

Opened: To explore E and W. face of W9275.

Limits (N) See previous season card

(S) See previous season card.

(E) L9755, L9808, L9842, W9841, L9835 and L9844

(W) L9815, L9823 and L9836

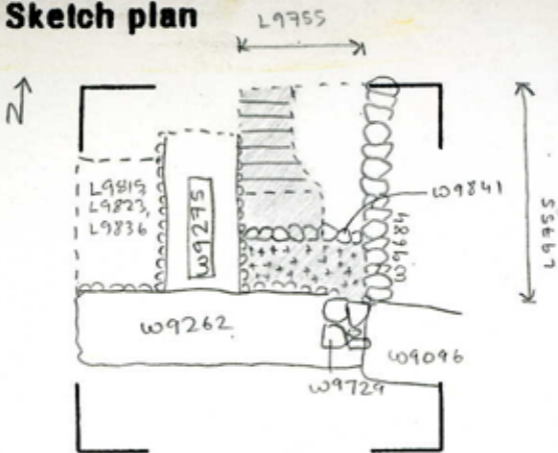
Closed: Not closed - End of season.

Matrix: Sockle observed this season. Two courses of stone with the upper course being smaller, fist-sized cobbles and the lower course being large hand-sized cobbles. The top of the sockle begins 13.62. Number of mudbrick courses were not clearly visible in section. Fragments of reed matting were found to W. in L9815 and L9823 - not in L9842.

Relations: See previous season card for all other relations. On the E. face, L9755, L9808, L9835 and L9842 reach W9275. W9841 appears to abut the sockle of W9275, but this is uncertain. The sockle for W9275 cuts into the top of L9844. On the W. face, L9815, L9823 and L9836 all reach W9275. Floors 9823 and 9836 appear to have probably reached W9275, though neither floor directly touches the sockle. The top level of the sockle for W9275 is 25cm below the level of the top of the sockle for W9262 with which it makes a corner, and the base of W9275's sockle continues for 15cm below the base of W9262's sockle. It may be that W9275 is an earlier wall which is cut by W9262, though no evidence of this has yet been found.

Additional Observations/Value: Mudbrick wall probably reached by floors 9823 and 9836 - High value

Sketch plan



■ L9808

▣ L9835, L9844

▨ L9842

Entered.

Locus WJ 9275	Dor 19 93	Fld G1	Sq A133/341	Loc. type Mudbrick wall with stone socle
Open Date 02/07/93	High at 14.21 S1	Low at 13.73 S1	Seals: _____	_____
Close Date 03/07/93	13.27 S1	13.20 N1	Sealed by: _____	_____
Floor: type _____	Width _____	Vol _____	Locl above 9251 _____	_____
Length 3.9	Remove _____	Drawn? YFS	_____	_____
Photo # (1) See Isra	Photo # (2) _____	Locl below _____	_____	_____
Written by: R.S.S	Checked by: J.R.Z	_____	_____	_____

Unit _____	Phase _____	Stage _____	Stratum _____	PoM _____
------------	-------------	-------------	---------------	-----------

Summary _____

Opened: Beginning of Season - Re-bored.

Limits (N) W9211

(S) W9262

(E) L9251 and see previous season cards

(W) L9816, L9883, L9919, L9928, L9927, L9928 and see previous season cards.

Closed: End of Season - Not closed.

Matrix: See previous season cards for mudbrick (phase A). Socle is 2 to 3 rows of head size and double fist size stones approx. 2-3 courses high. To the S the socle has a lower course of head size stones with two courses of double fist size stones on top of these. The N. socle is more uniform with equal sized stones throughout. There is one massive boulder in the lowest course of the socle but this may*

Relations: Above, the pit L9251 has cut the mudbrick superstructure in the N. extension of W9275. Clearing below the level of the pit revealed the intact stone socle. L9251 evidently slopes inward considerably from E-W, which is why it is above and W of W9275. To the W, L9816, L9883, L9919, L9927 and L9928 all reach the E face of the socle for W9275. W9928 presumably reached W9275. W9928 climbs sharply approximately 10cm before it reaches W9275. It may reach an earlier phase not yet uncovered.

To the N, the socle for W9275 abuts the stone of W9211. The mudbrick of W9275 may dovetail with W9211 (See 1993 A133 W9211 card for discussion)

To the S, the socle of W9275 abuts the socle of W9262.*

W9960 and W9961 both abut W9275. W9960 may be a lower extension of the massive boulder set into the lowest course of the socle of W9275.

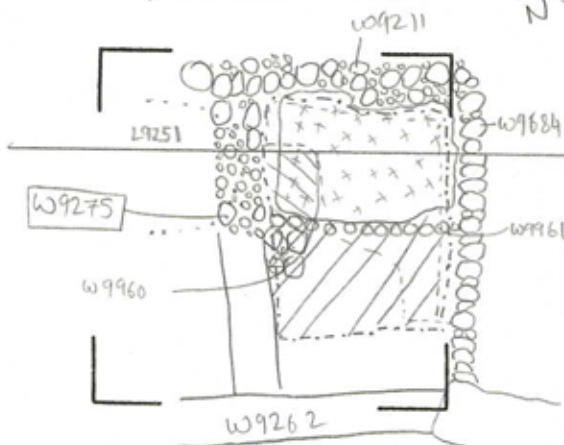
** Also to the S, W9275 floats above what may be a doorway formed by W9960 and W9262.

* relate to W9960 below (see relations). To the S, the socle is floating but to the N, the socle may be floating but it is obscured by the lip of W9928.

A few fragments of reed mat material were found directly on the top of the stone socle/foundation

Additional Observations/Value: High value: 1 of 4 walls which completely surrounds a room

Sketch plan W9275 100



F9928 - - - L9919 - - - L9816
 L9927 L9823 · · · L9251



105939



101128

Section



Section



102317



102314



102319



101200



102315

Locus W 9275	Dor 1994	Fld G	Sq A-E33	Loc. type Wall (card)
Open Date 1/1/1	High at 14.21 S	Low at 14.06 N	Seals: _____	
Close ϕ 5/18/94	13.36 S	13.11 G	Sealed by: _____	
Floor: type	Length 1.7	Width 0.7	Vol _____	Loci _____
Value 1	Remove 1/1/1	Drawn? Yes		above _____
Photo #(1)	Photo #(2)			Loci _____
Written by: J.R.2	Checked by: J.R.2			below _____
Unit _____	Phase _____	Stage _____	Stratum _____	PoM _____

Summary

Opened: See previous cards

Limits (N) See previous cards

(S) W9262

(E) See previous cards

(W) 18021, 18032, 180

Closed: Not closed (End of Season). Wall is floating

Matrix: See previous cards. On its west face W9275 is only 2 courses high of ca. hand-size field stones (or smaller)

Relations: For all relations above, N and E see previous cards. All relations for '94 are to west or south.

To the south the lower mudbrick phase of [W9262] (= 3rd from top) and its stone socle are below the base of the stone foundation of [W9275]. Evidently [W9275] did not exist during the earliest phase of [W9262]. However, the juncture of the 2 walls is obscured by a dirt pedestal used to support the sun shade tent pole. This corner will have to be cleared of debris next season.

To the east [18021] reaches [W9275]; [F18021] also reaches [W9275]. [W9275] begins to float in [18032]. Contra JYS on card for 18032, this suggests that [W9275] may cut [18032].

[18040] reaches [W9275]. [W9275] probably cuts [18067] and F18067 clearly; continues east below [W9275].

Additional Observations/Value: Abuts W9262 and 9211 so important for center phasing of Area G.

LOCUS

L 9121751

--- = 18032

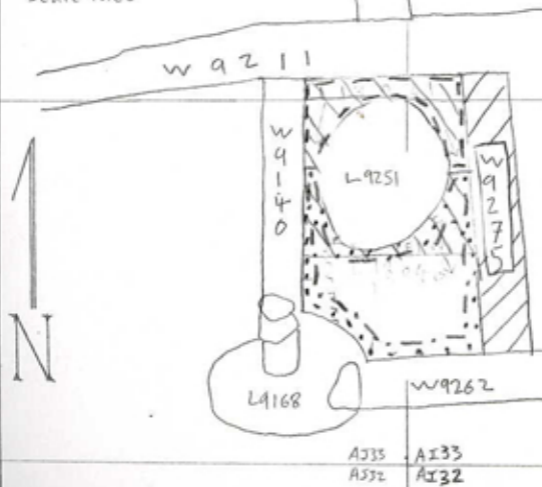
... = 18040

- - - = 18067 = F18021

/// = 18021

Sketch plan

Scale 1:100



Se



Locus W 9275		Dor 1917		Fld G ₁		Sq A133		Loc. type Mudbrick + Stone Wall (Card)	
Date		High at		Low at		Seals: _____			
Open 07/07/97		14.21 S ₁		14.06 M ₁		Sealed by: _____			
Close 08/08/97		12.68 N ₁		12.57 S ₁		Loci _____			
Floor: type _____		Length 3.8		Width 0.8		Vol _____		above _____	
Value _____		Remove _____		Drawn? _____		Loci _____			
Photo #(1) _____		Photo #(2) _____		Loci _____					
Written by: JCM		Checked by: JRZ		below _____					
Unit _____		Phase _____		Stage _____		Stratum _____		PoM _____	

Summary _____

Opened: See previous cards.

Limits (N) See previous cards

(S) See Previous Cards

(E) see previous cards

(W) L18232 = L18279, L18281 = L18246, L18283 = L18264 = L18292, L18271 = L18285

Closed: not closed. end of season reached

Matrix: Phase B has 2-3 courses of rough fieldstones ranging from 10cm² to 20x40 cm² in size. only 2 stones of Phase C are exposed and they are 40 cm² boulders. Phase B ends at 13.26 (North)/12.97 (South); Phase C ends at 12.68 - 12.57

Relations: Above: See previous cards

North: Phase B W9275 abuts W9211

South: See previous cards

East: See previous cards

West: L18232 = L18279 / F18232 = F18279 reaches W9275 Phase B

L18246 = L18281 reaches Phase B / W9275 but F18246 = F18281 continue under it.

L18252 = L18284 / F18252 = F18284 continue under W9275 Phase B

L18256 = L18259 / F18256 = F18259 may continue under W9275 Phase C.

L18264 = L18292 / F18264 = F18292 continue under W9275 Phase C.

L18271 = L18305 / F18271 show continue under under W9275 Phase C.

Phase C is currently the east face of W9275 which continues down 3 courses lower than the west face.

Additional Observations/Value: High Value.

Locus

W 9275



143669



143671



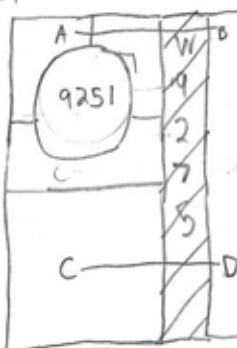
143670

Sketch plan

W9271

W9140

N
1:100



W9262

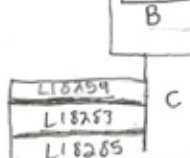


167648

Photo

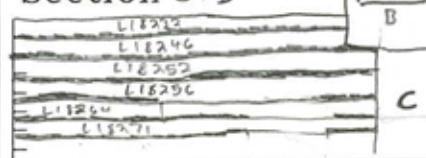
Section A-B

W9275



Section C-D

W9275



167647

Locus W 9, 2, 7, 5	Dor ²⁰ 0.0	Fld G ₁	Sq A I, 3, 3, 3, 4, 1	Loc. type (mudbrick) wall
Open Date 19/07/88	High at 1.4-4.6	at NOT GIVEN	Low at .	Seals: 1, 8, 4, 8, 1
Close Date 14/07/00	1.3-2.6	N ₁	1.2-1.6	C ₁
Floor: type	Width	Vol		Loci 9, 1, 8, 3 9, 1, 9, 3 9, 1, 9, 4
Length 1.7	Remove 14/07/00	Drawn? Y, E, S		above
Photo #(1)	Photo #(2)			Loci W 1, 8, 4, 8, 1 1, 8, 4, 8, 2 1, 8, 4, 7, 6
Written by: W, S, B	Checked by: E, B, S			below

Unit	Phase	Stage	Stratum	PoM
------	-------	-------	---------	-----

Summary

Opened: see previous cards

Limits (N)
(S)
(E)
(W)
Closed:
Matrix:
Relations:

- removed as a floating wall so no new associated floors. The stones were packed in a compact reddish-brown matrix. This same matrix fills the remaining foundation trench L18476.

- foundation stones removed as they were loose + threatened to topple. When removed it became apparent that W9275 sat on a lower ^{wall} aligned slightly more NW-SE. The bottom elevations on 1988-1994 cards are correct, the lower elevation on the 1997 card includes the stones of the second lower wall.

Additional Observations/Value: HIGH VALUE. Wall with associated floors. (see previous cards)