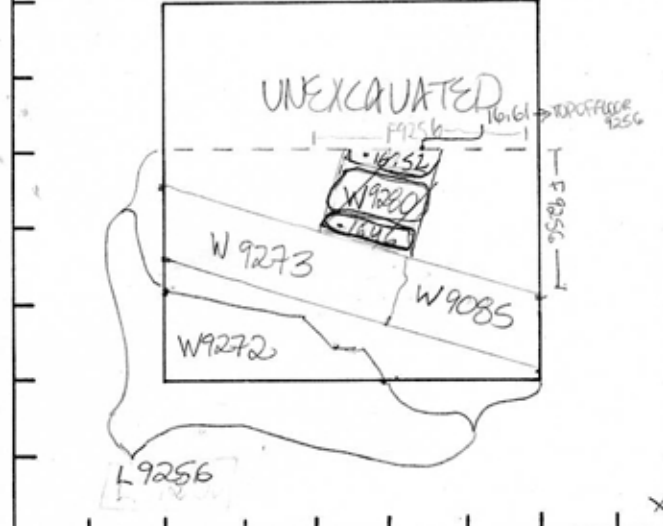


TEL DOR 1988 field G square Am 3.5 phase (in area): LOCUS W19280
 date opened 07/20/88 level 16.52 date closed 12/1/88 level 16.46 floor level type of locus WALL

loci above L9256 loci below sealed by

graphic description final locus no. arch. unit / logical area stage (in sq.) final STRATUM

Summary:



Description: REASON FOR OPENING WALL WAS UNCOVERED BUT UNEXCAVATED / DEFINITION OF LIMITS RUNS INTO EXCAVATED AREA FROM THE UNEXCAVATED NORTHERN SIDE OF SQUARE UNTIL IT MEETS W9273 PERPENDICULARLY WHERE W9085 ENDS THE THREE BLOCKS ARE (FROM SOUTH) 74 cm, 89 cm, 92 cm IN WIDTH. MATRIX MASSIVE ASHLAR BLOCKS MAKING UP A HETEROSTIC(?) HEADER WALL BLOCKS AVERAGED 0.80 M x 0.30 M ON VISABLE FACE REASON FOR CLOSING END OF SEASON, NOT CLOSED. RELATION TO OTHER ELEMENTS UNDER T9256. W9280 MEETS W9273 AT ITS SOUTHERN LIMIT. W9290 IS PERPENDICULAR TO W9273 AND W9085 THE EASTERN EDGE OF W9280 IS IN LINE WITH THE EASTERN END OF W9273, W9273 AND W9280

section ARE AT THE SAME ELEVATION. W9280 ABUTTS W9273. IT CAN NOT YET BE DETERMINED WHICH WAS FIRST (9273 or 9280). W9280 IN NO WAY REACHES W9085 ALTHOUGH THERE IS LIKELY SOME RELATIONSHIP SINCE W9085 ENDS IN LINE WITH THE EAST LINE OF W9280. REMAINS OF AN UNTRAVELED PLASTER FLOOR T9256 COVERED W9280.

photos

- reason for opening
- definition / limits
- reason for closing
- relation to other elements
- working photos, nos:
- publication photos
- architects permission

written by W. Swanson checked by J. Zorn