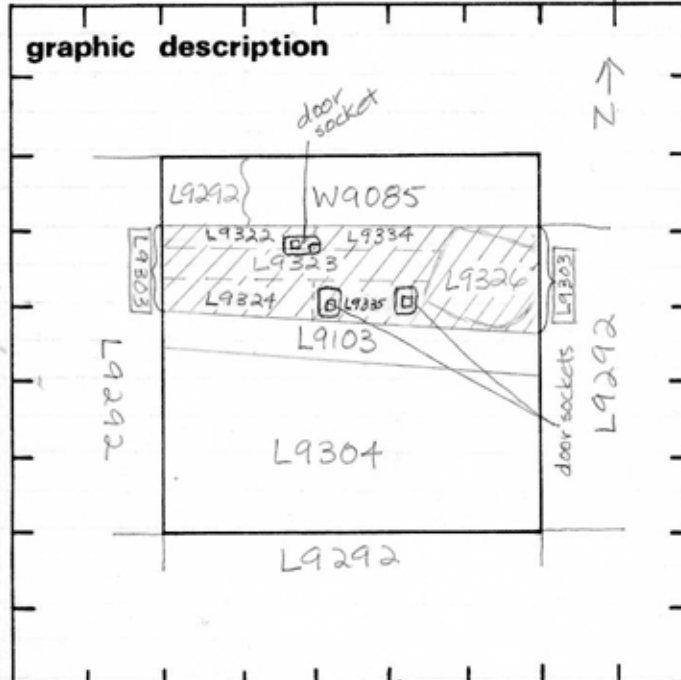


TEL DOR 19 88 field G square AK34 phase (in area): LOCUS L9303

date opened 27/07/88 level L6.33 date closed 05/08/88 level L6.05 floor level _____ type of locus Fill

loci above L9292 loci below L9322 L9323 L9324 L9334 L9335 L9326 sealed by _____



section

photos

- reason for opening
- definition / limits
- reason for closing
- relation to other elements
- working photos, nos: 41310
- publication photos
- architects permission

written by A. Capel checked by J. Zorn

final locus no. _____ arch. unit / logical area _____ stage (in sq.) _____ final STRATUM _____

Summary:

Description: Reason for Opening: Excavation revealed drain L9103 which divided Square AK34.

Definition/Limits: L9303 is bounded to the S by drain L9103, to the N by W9085 & L9292, & by the E & W baulks

Reason for Closing: Excavation revealed a large paving (?) stone L9326, and a robber trench L9323 at the closing level of L9303.

Relation to Other Elements: L9292 lies immediately above L9303. L9303 is cut to the S by drain L9103, & to the N by W9085. Paving stone L9326 lies below L9303 in the NE quarter of AK34. Robber trench L9323, and loci L9334, L9335, L9322, & L9324 lie below L9303.

Matrix: Light brown soil with very numerous rocks & chunks of cement; the matrix is similar to, but less firmly packed than, that of L9304. NOTE: L9303 contained three "door sockets," given a single basket # 92781.

