

TEL DOR

19 88

field

9

square

AH 3.4

phase (in area):

LOCUS

(CARD 1 OF 2)

W 9306

date opened

27/07/88

level

15.41

date closed

12/08/88

level

floor level

type of locus

WALL

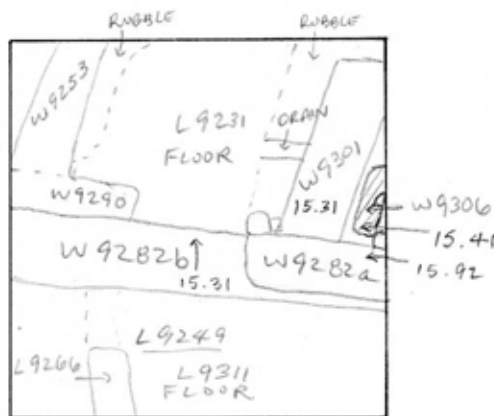
loci above

L 9231

loci below

sealed by

graphic description



LXXXX = locus above YYYY

section

photos

- reason for opening
- definition / limits
- reason for closing
- relation to other elements
- working photos, nos:
- publication photos
- architects permission

written by A.M. ABRANDES checked by J. Zorn

final locus no.

arch. unit / logical area

stage (in sq.)

final STRATUM

Summary:

Description:

OPENED: UPON REACHING [W 9306] Below [L 9231]

DEFINITION / LIMITS: BOUNDED BY EAST BALK;  
BY <sup>HARD CLAY</sup> MATERIAL BELOW [L 9231] ON THE NORTH, WEST AND SOUTH.MATRIX: COMPOSED OF 3 ASHLARS, <sup>NORTHERNMOST TWO:</sup> CA. 45m WIDE  
AND .35 m LONG, SOUTHERNMOST BLOCK .45 m WIDE, .15 m LONG  
NORTHERNMOST BLOCK HAS CURVED CUTTING (ca. .10 m WIDE & .10 m LONG)  
IN ITS SE CORNER

CLOSED: END OF SEASON - NOT CLOSED

RELATION TO OTHER ELEMENTS: [W 9306] PERHAPS REPRESENTS A THRESHOLD  
PARALLEL TO [W 9301] FROM WHICH IT IS SEPARATEDBy 0.10 m. of the same hard clay material which overlay [W 9301] and [W 9306]  
SEPARATED FROM [W 9282a] BY 0.15 m. of hard clay material.  
SIMILAR CONSTRUCTION TO [W 9301] SUGGESTS THE TWO  
ARE CONTEMPORARY.

ROUGH-CUT STONES OF [W 9282b] SUGGESTS EARLIER

CONSTRUCTION, WITH PLASTERED  
PILLAR ATTACHED TO [W 9282a] AND  
PLASTER FACING ON N FACE OF [W 9282a]  
PERHAPS CONTEMPORARY WITH CONSTRUCTION  
OF BOTH [W 9301] AND [W 9306]

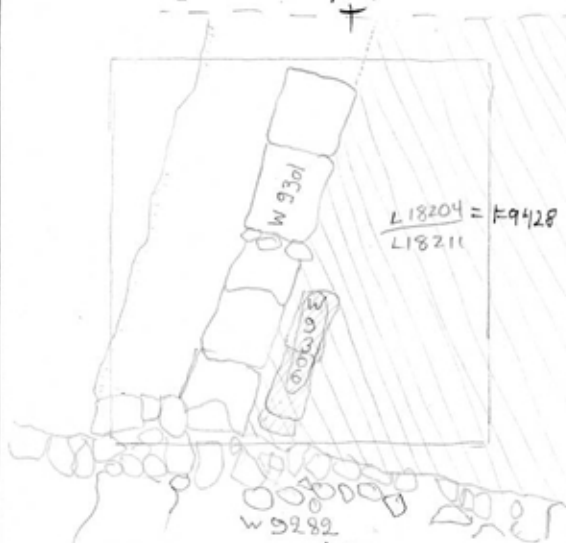
<b>Locus</b> W9306	<b>Dor</b> 19 <sup>97</sup>	<b>Fld</b> G <sub>1</sub>	<b>Sq</b> A1H341	<b>Loc. type</b> (CARD 2 OF 2) WALL
<b>Open</b> 08/07/17	<b>Date</b>	<b>High</b> at 15.42 S.W.	<b>Low</b> at 15.16 N.	<b>Seals:</b> 18204
<b>Close</b> 15/07/97		15.30 S.E.	14.97 N.	<b>Sealed by:</b>
<b>Floor:</b> type				<b>Loci</b> SEE 1988 LOCUS CARD
<b>Length</b> L. 1	<b>Width</b> 0.3	<b>Vol</b>		<b>above</b>
<b>Value</b> SL	<b>Remove</b> 15/07/97	<b>Drawn?</b> YES		<b>below</b>
<b>Photo # (1)</b> SEE PREVIOUS CARD	<b>Photo # (2)</b> SEE PREVIOUS CARD			<b>Loci</b> 18204
<b>Written by:</b> MAS	<b>Checked by:</b> JRZ			
<b>Unit</b>	<b>Phase</b>	<b>Stage</b>	<b>Stratum</b>	<b>PoM</b>
<b>Summary</b>				
Opened: SEE 1988 LOCUS CARD.				
<b>Limits (N)</b> SEE 1988 LOCUS CARD.				
(S)				
(E)				
(W)				
Closed: IN ORDER TO SEE THE RELATIONS OF W9306 AND L18204; W9306 was removed.				
<b>Matrix:</b> SEE 1988 LOCUS CARD.				
<b>Relations:</b> SEE 1988 LOCUS CARD.				
LOCI BELOW: W9306 COVERS L18204 IN THE SOUTH WEST CORNER OF L18204; that is, W9306 was built on top of F9428 (of which L18204 is the make up) and F9428 reaches W9301 and W9282 east and south of W9306, F9428/L18204 does not reach W9306.				
<b>Additional Observations/Value:</b> HIGH VALUE ROMAN WALL.				

LOCUS

M 9306

Sketch plan

N ↑



Photo

Photo

Section

Section

W 9306

AH 34

KG 34