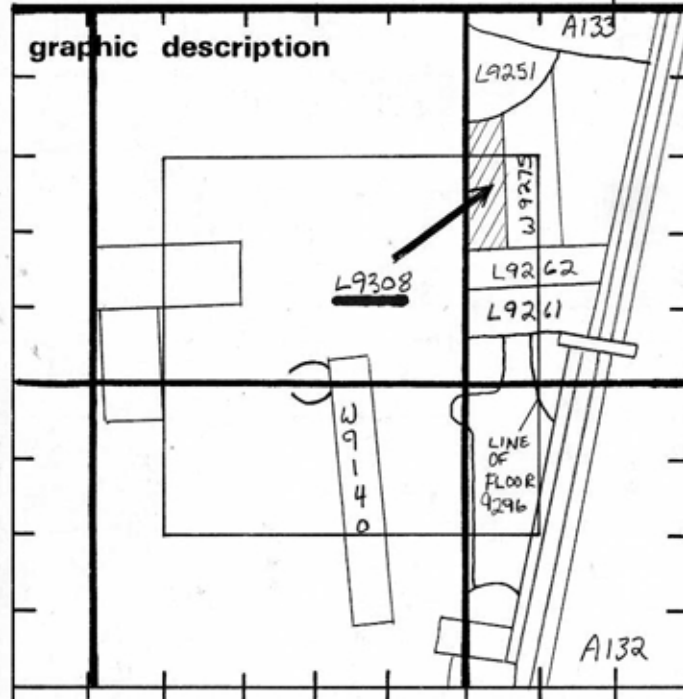


TEL DOR 19 ⁻⁸⁸ field G square A13.3 phase (in area): 6?? LOCUS L1930.8

date opened 01/08/88 level 1444 date closed 12/88/ level 1437 floor level _____ type of locus MUDBRICK DEBRIS + STONES

loci above 9209 9193 loci below 9332 sealed by _____



section

final locus no. _____ arch. unit / logical area _____ stage (in sq.) _____ final STRATUM _____

Summary: _____

Description: OPENED UPON DEFINITION OF A MUDBRICK WALL (L19275) RUNNING NORTH-SOUTH IN A133. L9308 DEFINED AS THE MATERIAL WEST OF L9275 AND NORTH OF L9262. L9308 LIES BELOW L9209, L9193, L9192 AND L9195 ALL EXCAVATED IN '81.

DEFINITION/LIMITS AREA OF MUDBRICK MATERIAL + SMALL RUBBLE STONES NORTH OF L9262, WEST OF L9275, SOUTH OF L9251 AND EAST OF L9321

MATRIX AREA OF MUDBRICK DEBRIS + SMALL RUBBLE STONES.

REASON FOR CLOSING: MATERIAL OF L9321 AND L9308 RECOGNIZED TO BE THE SAME DEPOSIT AREA COLLAPSED INTO L9332.

RELATION TO OTHER ELEMENTS: L9308 REACHES WALLS L9262 AND L9275

photos

- reason for opening
- definition / limits
- reason for closing
- relation to other elements
- working photos, nos:
- publication photos
- architects permission

written by D.L. STANFILL checked by _____

L9308 IS CUT BY L9251 L9308 ALSO REACHES L9321 ALONG L9321'S EASTERN SIDE.

NOTE: POSSIBLE CONTAMINATION FROM PIT L9251

