

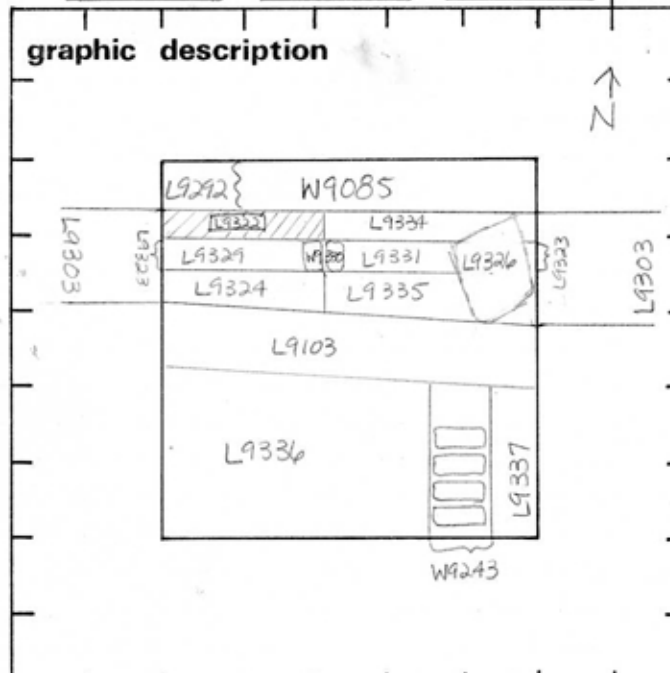
TEL DOR 19 88 field G square AK34

phase (in area):

CARD 1
LOCUS L19322

date opened 05/08/88 level 16.08 date closed 12/08/88 level 16.08 floor level _____ type of locus Stratified Fill

loci above L9303 loci below _____ sealed by _____



section

photos

- reason for opening
- definition / limits
- reason for closing
- relation to other elements
- working photos, nos:
- publication photos
- architects permission

written by A. Capel checked by J. Zorn

final locus no. _____ arch. unit / logical area _____ stage (in sq.) _____ final STRATUM _____

Summary:

Description: Reason for Opening: Excavation revealed robber trench L9323. At opening level of trench, differences in soil were detected in the E & W halves of the area N of drain L9103 & S of W9085.
 Definition / Limits: L9322 is bounded to the N by L9292 & W9085, to the W by the W bank, to the E by L9334, & to the S by L9323.
 Reason for Closing: Not excavated - End of Season
 Relation to Other Elements: L9303 lies immediately above L9322. L9322 is cut by W9085 & L9292 to the N, & by drain L9103 to the S. L9322 reaches L9334 to the E.
 Matrix: Not determined - locus not excavated this season, though the matrix of L9322 appears to be similar to that of L9324.

TEL DOR

1999

field

G

square

A.K.34

phase (in area):

CARD 2.

LOCUS

L19302

date opened

05/09/89

level

1609

date closed

01/07/89

level

1569

floor level

type of locus

FILL

loci above

L9303

loci below

L9467

sealed by

graphic description

final locus no.

arch. unit / logical area

stage (in sq.)

final STRATUM

Summary:

Description:

REASON FOR OPENING: GYLAUTION REVIGLED ROBBAR TRINCH [L9329]

DIFFERENCES IN SOIL WERE DETECTED IN THE G.I.W. HANDLES OF THE
XREX S OF W9085.

MATRIX: CHOCOLATE SOIL CONTAINING POTTERY AND BONE.

DEFINITION/LIMITS: BOUNDED TO THE N BY [L9292] AND [W9085], TO
THE W BY BANK TO THE E BY [L9339] AND TO THE S BY [L9329]REASON FOR CLOSING: REACHED UNIFORM GREY SOIL IN UNDER REGION
[L9329] AND [L9324] - ALSO UNDER ^{W. half of} [L9336], COLLAPSED INTO [L9467]RELATIONS: [L9303] COVERS [L9322]. [L9322] IS CUT BY [W9085]
[L9292] CUT BY [L9329] ROBBAR TRINCH. REACHES [L9339]
COVERS [L9467].

section

photos

- reason for opening
- definition / limits
- reason for closing
- relation to other elements
- working photos, nos:
- publication photos
- architects permission

written by W. SWANSONchecked by J. Zorn