

TEL DOR

1938

field

G

square

A.K.3.4

phase (in area):

CARD+

LOCUS

L93.24

date opened

05/08/88

level

16.08

date closed

12/09/88

level

16.08

floor level

type of locus

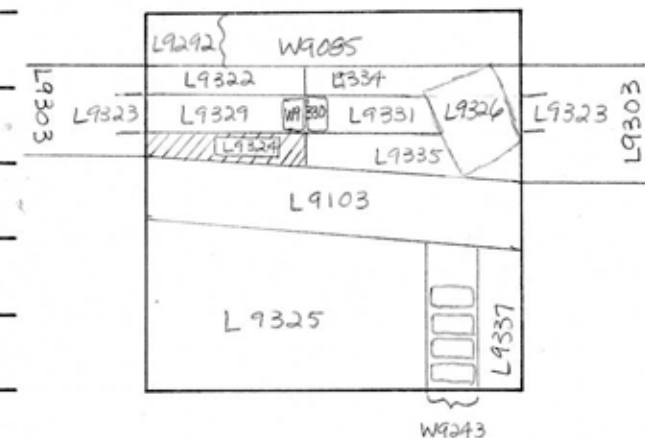
loci above

L93.03

loci below

sealed by

graphic description



section

photos

- reason for opening
- definition / limits
- reason for closing
- relation to other elements
- working photos, nos:
- publication photos
- architects permission

written by A. Capelchecked by J. Zorn

final locus no.

arch. unit / logical area

stage (in sq.)

final STRATUM

Summary:

Description:

Reason for Opening: Excavation revealed robber trench [L9323]. At opening level of trench, differences in soil were detected in the E & W halves of the area N of drain [L9103] & S of [W9085].

Definition/Limits: [L9324] is bounded to the N by [L9329], to the S by [L9103], to the W by the W bank, & to the E by [L9335].

Reason for Closing: Not excavated - End of Season

Relation to Other Elements: [L9303] lies immediately above [L9324]. [L9324] is cut by drain [L9103] to the S, & by robber trench ([L9323]/[L9329] & [W9330]) to the N. [L9324] reaches [L9335] to the E.

Matrix: Locus [L9324] not excavated this season, though the matrix of [L9324] appears to be similar to that of [L9322].



TEL DOR

1989

field

G

square

K.R.34

phase (in area):

CARD 3

LOCUS 119324

date opened

05/09/89

level

L608

date closed

20/07/89

level

L558

floor level

type of locus

PIT/1X6/10

loci above

L9303 L9103

loci below

L9467

sealed by

graphic description

final locus no.

arch. unit / logical area

stage (in sq.)

final STRATUM

Summary:

Description:

REASON FOR OPENING: EXCAVATION REVEALED ROBBED TRENCH [L9323] / [L9329].  
SOIL DIFFERENCES DETECTED BETWEEN E/W SIDES OF SQUARE

MATRIX: (L)BROWN BROWN - SAME AS [L9322].

DEFINITION/LIMITS BOUNDED ON N BY [L9329] ON SOUTH COVERS EXTENDS OVER  
AREA ORIGINALLY SEALED BY DRAIN [L9103] TO [L9336]. BOUNDED ON E BY [L9439]

REASON FOR CLOSING: CAME DOWN ON UNIFORM SOIL COLOR (ASHY) UNDER [L9329]  
[L9322] AND [L9324]. FOLDED INTO [L9467]

RELATIONS: [L9303] LIES IMMEDIATELY ABOVE [L9324] [L9324] IS CUT BY  
ROBBED TRENCH [L9329] / [L9323]. [L9324] IS PARTIALLY SEALED BY

DRAIN [L9103]. COVERS [L9467] CUT BY [L9439]  
AND [L9336]. REACHES [L9330].

section

photos

- reason for opening  
 definition / limits  
 reason for closing  
 relation to other elements  
 working photos, nos:  
 publication photos  
 architects permission

written by W. SWANSONchecked by J. ZORN