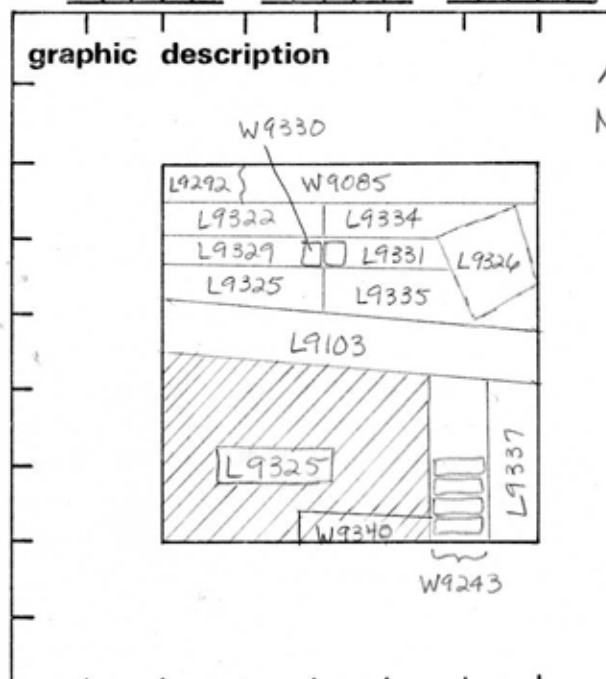


TEL DOR 1988 field G square AK34 phase (in area): LOCUS L9.3.2.5

date opened 05/08/88 level 16.16 date closed 08/08/88 level 15.73 floor level \_\_\_\_\_ type of locus Stratified Fill

loci above L9304 loci below L9336 W9340 sealed by \_\_\_\_\_



final locus no.	arch. unit / logical area	stage (in sq.)	final STRATUM

**Summary:**

**Description:** Reason for Opening: Excavation revealed header wall [9243], split into [9325] and [9337]  
 Definition/Limits: [L9325] is bounded to the N by [L9103], to the E by header wall [9243], & to the W & S by the W & S baulks  
 Reason for Closing: Came down on [W9340] protruding from S baulk  
 Relation to Other Elements: [L9304] lies immediately above [L9325]. [L9325] is cut to the E. by wall [9243] & to the N by drain [L9103]. [L9336] & [W9340] lie immediately below [L9325].

section

Matrix: Medium brown soil containing many rocks, & a few tesserae & chunks of cement. The soil seems to be slightly less densely

- photos
- reason for opening
  - definition / limits
  - reason for closing
  - relation to other elements
  - working photos, nos:
  - publication photos
  - architects permission
- written by A. Capel checked by J. Zorn

packed on the W side than on the E side. The material from [L9271], at the same elevation in Square AK33, consisted of lighter finer, & looser soil, though it also contained numerous rocks, & chunks of cement (likely tumble from [W9003]).

