

TEL DOR

1988

field

G

square

AK.34

phase (in area):

CARD 1

LOCUS L9.3.26

date opened

05/08/88

level

L6.1.3

date closed

12/08/88

level

L5.8.7

floor level

type of locus

Paving (?) stone

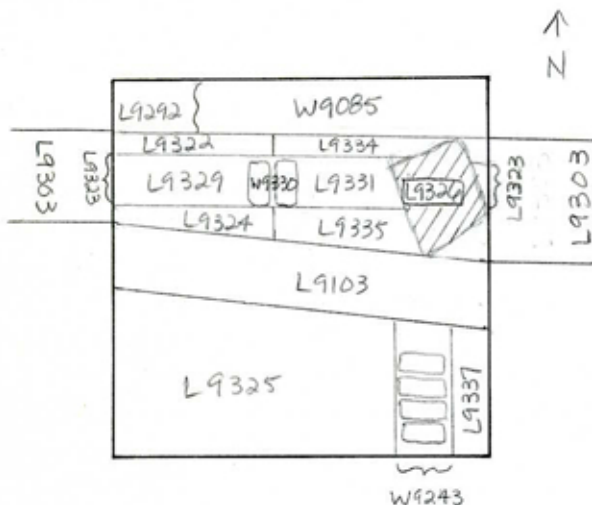
loci above

L9.3.03

loci below

sealed by

graphic description



final locus no.

arch. unit / logical area

stage (in sq.)

final STRATUM

Summary:

Description: Reason for opening: Excavation revealed presence of paving (?) stone [L9326] "Maurice" in Square AK.34

Definition/Limits: [L9326] lies immediately below [L9303]. [L9326] is bounded to the West by [L9323], [L9331], [L9334], [L9335]. To the E & SE [L9326] is bounded by two small areas: not assigned loci numbers

Reason for Closing: Not excavated: End of Season

Relation to Other Elements: [L9326] lies below [L9303]. [L9326] appears to cut robber trench (loci numbers [L9323] & [L9331]) & L9335 to the W. [L9326] cut [L9334] to the W & NW. To the E & SE [L9326] appears to cut two small areas (not assigned loci numbers) which lie between [L9326] & the E bank & drain [L9103].

section

photos

- reason for opening
- definition / limits
- reason for closing
- relation to other elements
- working photos, nos:
- publication photos
- architects permission

written by A. Capelchecked by J. Zorn

End of season prevents determining loci below

Matrix: Limestone paving (?) slab, 109 cm X 124 cm X 24 cm.

TEL DOR

1989

field

G

square

A.K.3.1

phase (in area):

CARD 2

LOCUS 119.3.2.6

date opened

level

date closed

level

floor level ON TOP OF WALKER

type of locus

05/08/88

L614

21/27/89

L58.1

L614

L609

ASHLAR (GIANT)

loci above

L9.3.03

loci below

L9.4.69

sealed by

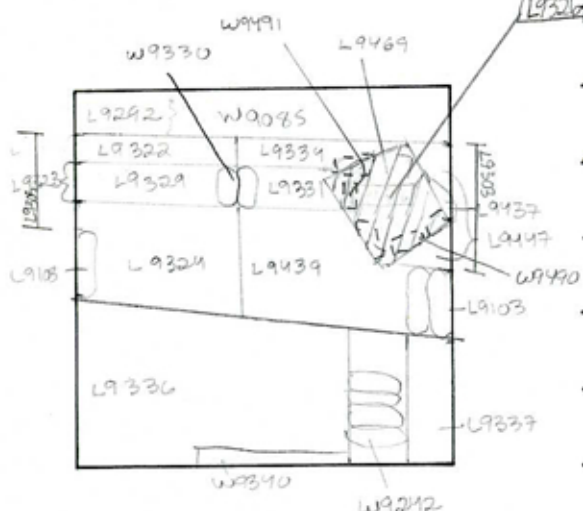
graphic description

final locus no.

arch. unit / logical area

stage (in sq.)

final STRATUM



Summary:

Description:

REASON FOR OPENING: EXCAVATION REVEALED "MOSAIC" [L9326] A LARGE LIMESTONE BLOCK - UNKNOWN UGGE.

MATRIX: LARGE LIMESTONE BLOCK (WORKED) WITH CUT VADE ALONG UNDER-SIDE. DEPTH 20-30 CM. SIDES ^{NE}108, ^{NW}110, ^{SE}105, AND ^{SW}123 CM.

DEFINITION/LIMITS: COVERED BY [L9303] BOUNDED ON W BY [L9334], [L9331] AND [L9439] ON E BY [L9437] AND [L9447] ON S BY [L9103]

REASON FOR CLOSING: TO REMOVE SLAB (END ALL)

RELATIONS: COVERED BY [L9303] SINKS [L9469] WHICH IS SIMILAR TO UNSENCE [L9437] ONE. CUTS IS BARBER TRENCH [L9331] CUTS [L9334].

section

photos

- reason for opening
- definition / limits
- reason for closing
- relation to other elements
- working photos, nos:
- publication photos
- architects permission

written by W. SWANEYchecked by J Zorn

(SIMILAR TO [L9447] REACHES DRAIN [L9103] AND REACHES [L9439]. [L9437] REACHES [L9326], [L9336] CUTS [L9447] SITS ON TOP OF [W9490] & [W9491]