

TEL DOR

1988

field

G

square

A.K.34

phase (in area):

LOCUS W9330

date opened

05/08/88

level

L6.01

date closed

12/08/88

level

L5.83

floor level

type of locus

Header Wall (robbed)

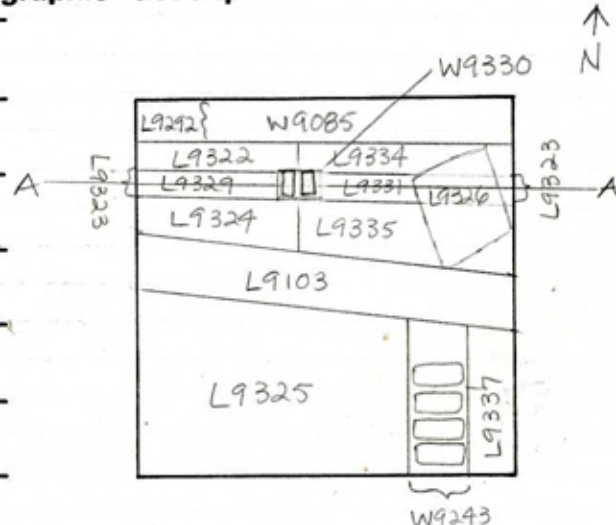
loci above

L9.3.23

loci below

sealed by

graphic description



section

See Back

photos

- reason for opening
- definition / limits
- reason for closing
- relation to other elements
- working photos, nos:
- publication photos
- architects permission

written by A. Capelchecked by J. Zern

final locus no.

arch. unit / logical area

stage (in sq.)

final STRATUM

Summary:

Description:

Reason for Opening: Excavation in robber trench [L9323] revealed [W9330]

Definition/Limits: The two remaining header stones of [W9330] extend in an E-W orientation across Square AK.34; the robber trench (Loci [L9323], [L9329], & [L9331]) of the wall extends into the E & W baulks.

Reason for Closing: Not excavated - End of Season

Relation to Other Elements: [W9330] is cut by the robber trench [L9323], which lies immediately above [W9330]. [W9330] is cut to the W by robber trench [L9329], & to the E by robber trench [L9331]. [W9330] seems to have cut [L9322] to the NW, [L9334] to the NE, [L9335] to the SE, & [L9324] to the SW.

Matrix: [W9330] consists of header stones, 40 cm x 18 cm x 14 cm.

TEL DOR

1988

field

G

square

A.K.34

phase (in area):

LOCUS

W19330

date opened

level

date closed

level

floor level

type of locus

05/08/88

L6.01

12/08/88

L5.83

Header Wall (robbed)

loci above

L9323

loci below

sealed by

graphic description

final locus no.

arch. unit / logical area

stage (in sq.)

final STRATUM

Summary:

Description:

Reason for Opening: Excavation in robber trench [L9323] revealed [W9330]

Definition/Limits: The two remaining header stones of [W9330] extend in an E-W orientation across Square A.K.34; the robber trench (Loci [L9323], [L9329], & [L9331]) of the wall extends into the E & W baulks.

Reason for Closing: Not excavated - End of Season

Relation to Other Elements: [W9330] is cut by the robber trench [L9323], which lies immediately above [W9330]. [W9330] is cut to the W by robber trench [L9329], & to the E by robber trench [L9331]. [W9330] seems to have cut [L9322] to the NW, [L9334] to the NE, [L9335] to the SE, & [L9324] to the SW.

section

See Back

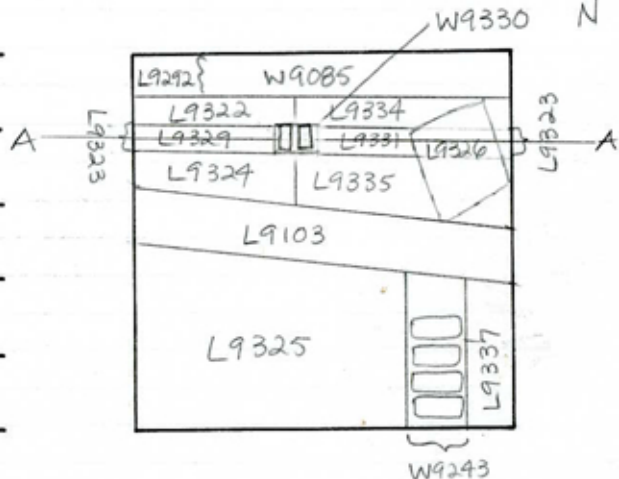
photos

- reason for opening
- definition / limits
- reason for closing
- relation to other elements
- working photos, nos:
- publication photos
- architects permission

written by A. Capel

checked by J. Zern

Matrix: [W9330] consists of header stones, 40cm x 18cm x 14cm.



TEL DOR 1989 field G square A.5.3.4 phase (in area): CARD2 LOCUS W19330

date opened 05/08/88 level 1601 date closed 11/08/88 level 1545 floor level _____ type of locus HEADER WALL (ROBBED)

loci above L9323 loci below none yet sealed by _____

graphic description



final locus no. _____ arch. unit / logical area _____ stage (in sq.) _____ final STRATUM _____

Summary:

Description: FOR 1st COURSE R.T. TRENCH THIS IS 2nd COURSE (1st REMOVED)

REASON FOR OPENING: EXCAVATION IN ROBBED TRENCH [L9323] REVEALED [W9330].

MATRIX: TWO ASHLARS AVG. 17cm WIDTH, 40cm LENGTH, DEPTH?

DEFINITION/LIMITS: TWO HEADER STONES, E-W ORIENTATION. TWO ASHLARS APPEARED DIRECTLY BELOW 1st COURSE (ALSO TWO BLOCKS) SLIGHTLY OFFSET FROM 1st TWO. NO APPARENT RT. WEST IS [L9467], EAST IS UNNUMBERED AREA IN WHICH DIA'S WALL [W9497] DISAPPEARS.

REASON FOR CLOSING: END OF SEASON.

RELATIONS: DIRECTLY UNDER 1st COURSE [W9330] (REMOVED), SAME SIZE

section

photos

- reason for opening
- definition / limits
- reason for closing
- relation to other elements
- working photos, nos:
- publication photos
- architects permission

written by W. SWANSON

checked by J. ZORN

ASHLARS AS 1st COURSE, NO LONGER W/DR VISIBLE RT. E. DISTURBANCE OF DIA'S WALL [W9497] IS SUSPECTED, ALSO SEEMS TO AFFECT [W9330]. DISTURBANCE WITHIN [W9330] PROBABLY DUE TO "MAURICE INSTALLATION", [W9491], SOME ASHLARS IN INSTALLATION MATCH DIMENSIONS OF [W9330] BLOCKS. ONE ASHLAR NOW VISIBLE IN SECTION TO W OF [W9491] (REMOVED) HAS DIMENSION ASHLARS IS NEARLY OF [W9330] AND IN LINES WITH, POSSIBLE LOWER COURSE OF [W9330] TO W. OF [W9330]. FLOOR [L9467] IS IN PATH OF [W9330], [L9467] (WITH [W9330] EARLY COURSE) +