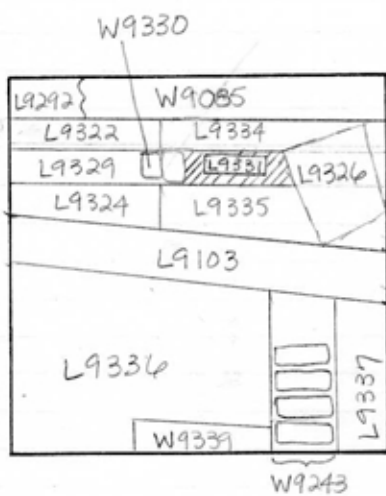


TEL DOR 19 88 field G square A.K.34 phase (in area): _____ LOCUS L9.3.3.1

date opened 05/08/88 level 15.91 date closed 12/08/88 level 15.8.3 floor level _____ type of locus Robber Trench

loci above L9.3.2.3 loci below _____ sealed by _____

graphic description



final locus no. _____ arch. unit / logical area _____ stage (in sq.) _____ final STRATUM _____

Summary:

Description: Reason for Opening: Excavation in robber trench [L9323] revealed [W9330].

Definition/Limits: [L9331] lies immediately below [L9323]. [L9331] is bounded to the N by [L9334], to the E by paving (?) stone [L9326], to the S by [L9335], & to the W by [W9330].

Reason for Closing: Not Closed - End of Season.

Relation to Other Elements: [L9323] lies immediately above [L9331]. [L9331] cuts [L9334] to the N, [L9335] to the S, & [W9330] to the W. [L9331] may extend under [L9326] to the E, as the dark, ashy soil of [L9323] is visible in the E bank beyond [L9326]. *

Matrix: Medium brown soil, slightly more densely packed, & rockier than that of [L9329].

section

photos

- reason for opening
- definition / limits
- reason for closing
- relation to other elements
- working photos, nos:
- publication photos
- architects permission

written by A. Capel

checked by J. Zorn

*When the E bank was removed the continuation of the robber trench could be seen there, though due to time its limits could not be traced.

TEL DOR

1989

field

6

square

A.K.3.4

phase (in area):

LOCUS L19.3.31

date opened

05/08/89

level

1591

date closed

19/07/89

level

1571

floor level

type of locus

ROBBER TRENCH

loci above

L9.3.23

loci below

L9.4.69

sealed by

graphic description



final locus no.

arch. unit / logical area

stage (in sq.)

final STRATUM

Summary:

Description:

REASON FOR OPENING: EXCAVATION OF ROBBER TRENCH [L9323] REVEALED [L9330]

MATRIX: DARK GREY SOIL, LOOSLY PACKED FEW ROCKS

DEFINITION/LIMITS: IMMEDIATELY BELOW [L9323], BOUNDED TO N. BY [L9334], E BY [L9326] S BY [L9439] W BY [L9337].

REASON FOR CLOSING: COLLAPSED [L9331] [L9334] AND [L9439] INTO [L9469] WHEN ROBBER TRENCH DISAPPEARED AND SOIL BECAME A UNIFORM ORANGE, CONTAINING SOME KURKAR.

RELATIONS: [L9323] LIGS IMMEDIATELY ABOVE [L9331] AND IS ALSO PART OF ROBBER TRENCH OF [L9330]. [L9331] CUTS [L9334] AND [L9439] TO N.B.S. [L9331] REACHES [L9430] ON W, CUT BY [L9326] ON G, COVERS [L9469].

section

photos

- reason for opening
- definition / limits
- reason for closing
- relation to other elements
- working photos, nos:
- publication photos
- architects permission

written by S. ARNOLDchecked by J. Zorn

DISTURBANCE: SOME DISTURBANCE FROM WASH DURING WINTER.