

TEL DOR

1988

field

G

square

A.K.34

phase (in area):

CARD 1

LOCUS L9334

date opened

05/08/88

level

L6.10

date closed

12/08/88

level

L6.10

floor level

type of locus

Stratified Fill

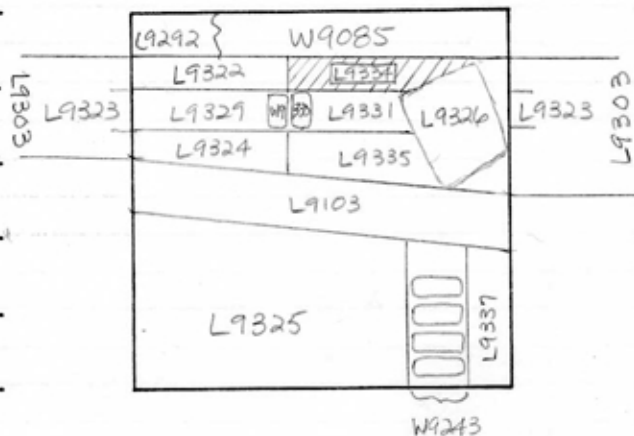
loci above

L9.3.0.3

loci below

sealed by

graphic description



section

photos

- reason for opening
- definition / limits
- reason for closing
- relation to other elements
- working photos, nos:
- publication photos
- architects permission

written by A. Capelchecked by J. Zorn

final locus no.

arch. unit / logical area

stage (in sq.)

final STRATUM

Summary:

Description:

Reason for Opening: Excavation revealed robber trench [L9323]. At opening level of trench, differences in soil were detected in the E & W halves of the area N of drain [L9103] & S of [W9085].

Definition/Limits: [L9334] is bounded to the N by [W9085], to the S by [L9323], to the W by [L9322], & to the E by [L9326].

Reason for Closing: Not excavated - End of Season

Relation to Other Elements: [L9303] lies immediately above [L9334]. [L9334] is cut by a robber trench (loci numbers [L9323], [L9331]) to the S, & by paving(?) stone [L9326] to the E & NE. [L9334] reaches [L9322] to the W. The relationship between [L9334] & [W9330] is undeterminable without further excavation, could either or not reach it. *

Matrix: Not determined - locus not excavated this season

* depending on whether we have the foundation courses here of [W9330]

TEL DOR

1989

field

G

square

A.K.3.4

phase (in area):

CARD 2

LOCUS L19.334

date opened

05/08/89

level

16.10

date closed

20/07/89

level

15.73

floor level

type of locus

Fill-Pit/Like

loci above

L9303

loci below

L9468

sealed by

graphic description



final locus no.

arch. unit / logical area

stage (in sq.)

final STRATUM

Summary:

Description:

REASON FOR OPENING: EXCAVATION REVEALED ROBBED TRENCH [L9330]. SOIL CHANGES WERE DETECTED ON E AND W SIDES. EAST & GRAY ROCKY SOIL WEST AND ORANGE SOIL.

MATRIX: ROCKY DRY SOIL CONTAINING BONES AND POTTERY. KURKAR CLUMPS.

DEFINITION/LIMITS: BORDERED ON W BY [L9322]; ON S BY [W9330], [L9323] AND [L9331]; ON E BY [L9326]; ON N BY [W9085].

REASON FOR CLOSING: Collapsed [L9334] [L9331] AND [L9439] INTO [L9468] AFTER THEY WERE FOUND TO BE OF THE SAME MATERIAL, FINE ORANGE SOIL CONTAINING SOME KURKAR.

RELATIONS: [L9303] COVERS [L9334]. [L9334] IS CUT BY [W9085].

[L9334] IS ALSO CUT BY ROBBED TRENCH [L9331] REACHED BY [L9322] FILL. COVERS [L9467]. CUT BY [L9326] "MAURICE".

DISTURBANCE: MAY BE CONTAMINATED BY WASH FROM WINTER STORMS.

section

photos

- reason for opening
- definition / limits
- reason for closing
- relation to other elements
- working photos, nos:
- publication photos
- architects permission

written by V. SWANSONchecked by J. Zorn

