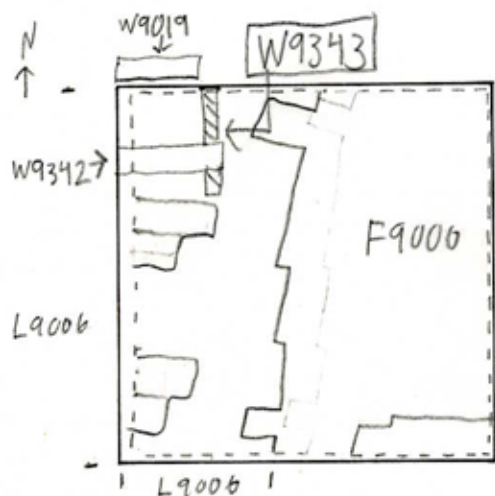


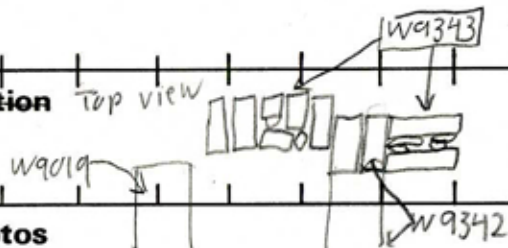
TEL DOR 19 88 field G square AJ31 phase (in area): LOCUS W 9343

date opened 11/08/88 level 1583 date closed 11/08/88 level 1583 floor level type of locus Wall  
 loci above L 9006 loci below None at Present sealed by

graphic description



section Top view



photos

- reason for opening
- definition / limits
- reason for closing
- relation to other elements
- working photos, nos:
- publication photos
- architects permission

written by J. Zorn

checked by J. Zorn

final locus no. arch. unit / logical area stage (in sq.) final STRATUM

Summary:

Description:

[Opened]: Uncovered when [W9342] was discovered under West baulk of AJ31. [W9342] was traced to the East and was found to make a corner with [9343].

[Def./Limits]: Bounded on the North by square AJ32, on the East by unnumbered fill, on the South by unnumbered fill, and on the West by unnumbered fill and

[Closed]: Not closed - End of Season

[Matrix]: ashlar blocks laid header-fashion (mainly) between [W9019] and [W9342], while South of [W9342] it is two stretchers with smaller stone packing. This Southern extension is also on a slightly different orientation than the northern part of [9343]. It is ca. 1.55 m. long and 0.40 m. wide.

[Relations]: Difficult to ascertain without further excavation. [W9343] would have made a corner with [W9019] on the North, and [W9019] is only one course of headers, probably a foundation course. [W9343] might also be a foundation and cut the fills to East, South and West. The extension South of [W9342] looks like perhaps a different wall. It may extend under pavement [F9000]. It forms a good corner with [9342]. [L9006] covered both [9342] and [9343]. It has no further extension into AJ32