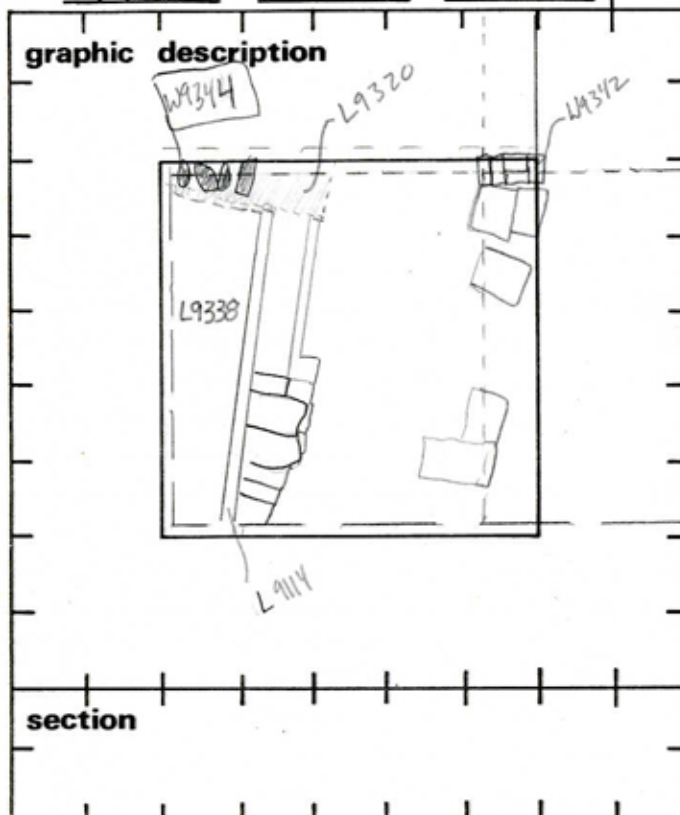


TEL DOR 1988 field G square A.K.3.1 phase (in area): 2+3? LOCUS W19344

date opened 11/08/88 level L587 date closed 11/08/88 level _____ floor level _____ type of locus WALL

loci above RAULK L9320? loci below _____ sealed by _____
NONE AT PRESENT



final locus no. _____ arch. unit / logical area _____ stage (in sq.) _____ final STRATUM _____

Summary: _____

Description: REASON FOR OPENING: WALL REVEALED WHEN ^{NORTH OF AK31} RAULK WAS REMOVED

DEFINITION/LIMITS: EXTENDS FROM WEST RAULK ABOUT 40 CM EASTWARD. BOUNDED ON SOUTH AND PARTLY ON EAST BY [L9320].

MATRIX: TWO COURSES OF KURKAR STONES, 2 ASHKARS.

REASON FOR CLOSING: END OF SEASON, NOT CLOSED

RELATION TO OTHER ELEMENTS: ROBBED (?) BY [L9320].

IN LINE WITH [W9342] IN [AJ31], AT ABOUT THE SAME LEVEL. COVERED BY RAULK MATERIAL. Original relationship to [L9338] unclear at present. Robber trench [L9320] prevents us from determining whether [L9338] reaches [W9344] or is cut by it.

7/02 EB-S see note on W9342

- photos
- reason for opening
 - definition / limits
 - reason for closing
 - relation to other elements
 - working photos, nos:
 - publication photos
 - architects permission
- written by R. LINDBLROM checked by J. Zorn
