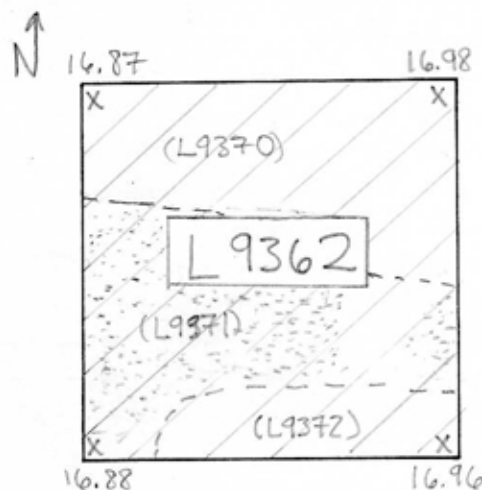


TEL DOR 19 89 field G square AE32 phase (in area): LOCUS L19362
 date opened 07/07/89 level 16.98-16.87 date closed 11/07/89 level 16.84-16.68 floor level 16.84-16.68 type of locus TOPSOIL TO FLOOR?
 loci above _____ loci below 9370 9371 sealed by _____

graphic description



final locus no. _____ arch. unit / logical area _____ stage (in sq.) _____ final STRATUM _____

Summary:

Description: REASON FOR OPENING: [L9362] OPENED TO BEGIN EXCAVATION OF SQUARE AE32 IN AN ATTEMPT TO FIND THE CONTINUATION OF "COUSIN OF BLOB" OR [W9096].

DEF. / LIMITS: [L9362] EXTENDS TO ALL FOUR BAULKS.

MATRIX: DARK BROWN TOPSOIL WITH MANY POT SHERDS, SHELLS, TESSERAE, ROCKS, MARBLE, AND ONIONS.

REASON FOR CLOSING: CAME DOWN UPON A POSSIBLE DEGRADED FLOOR SURFACE OF CONCRETE AND KURKAR IN THE CENTRAL PART OF SQUARE. SPLIT INTO THREE LOCI (L9370, L9371, L9372).

RELATIONS: [L9362] COVERS ALL SUBSEQUENT LOCI. DIRECTLY

section

photos

- reason for opening
- definition / limits
- reason for closing
- relation to other elements
- working photos, nos:
- publication photos
- architects permission

written by Laura Miller checked by J. Zorn

BELOW ARE LOCI [L9370] IN THE NORTH, [L9371] IS THE DEGRADED SURFACE IN THE CENTRAL PART OF THE SQUARE; FILL [L9372] IN THE SOUTH OF SQUARE. SURFACE OF [L9362] MAY BE ASSOCIATED WITH [W9096] OR WITH RUBBLE IN SOUTHWEST CORNER OF SQUARE AC32. IT COULD ALSO BE PART OF THE SUBFLOOR FOR THE ASHLAR PAVEMENT WHICH MIGHT HAVE COVERED THIS AREA BUT WAS SUBSEQUENTLY ROBBED. [L9362] IS DEFINITELY DISTURBED.

