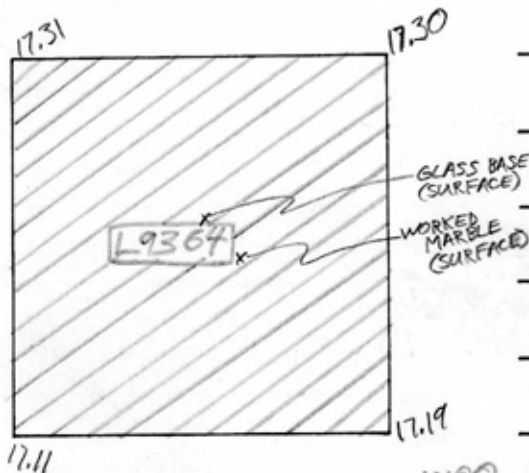


TEL DOR 1989 field G square AA32 phase (in area): LOCUS L9364-
 date opened 07/07/89 level 17.31/17.11 date closed 18/07/89 level 16.78/16.74 floor level _____ type of locus TOPSOIL
 loci above _____ loci below L9397 sealed by _____

graphic description



section

final locus no. _____ arch. unit / logical area _____ stage (in sq.) _____ final STRATUM _____

Summary:

Description: REASON FOR OPENING: SEEKING TO DETERMINE IF W9096 CONTINUES TO AND JOINS W24631 IN AREA B1.

DEF./LIMITS: TOPSOIL COVERING WHOLE SQUARE.

MATRIX: SOIL IS DARK GRAY, SOMEWHAT COMPACTED, BREAKS INTO LARGE CLODS. CONTAINS MANY SHEARDS AND VARIOUS KINDS OF SHELLS, ROOF TILE FRAGMENTS AND TESSERAE, AND MANY FIST SIZE CHUNKS OF KURKAR PLUS A FEW ANIMAL BONES.

REASON FOR CLOSING: EXCAVATION REVEALED L9397 BELOW, ALSO COVERING ENTIRE SQUARE. L9397 A YELLOW-BROWN SOIL WITH HIGH SAND CONTENT.

RELATION TO OTHER ELEMENTS: COMPLETELY COVERS L9397.

photos

- reason for opening
- definition / limits
- reason for closing
- relation to other elements
- working photos, nos:
- publication photos
- architects permission

written by R. Lethbridge checked by J. Zorn

LOCUS

L19364-

BASKET LIST

basket no.	level	str def	cont	R +	periods	comments
B93611	1722	0101	0	12		
B93613		0113				base and separate fragment (SURFACE FIND)
B93614		0108				marble architectural molding (SURFACE FIND)
B93615	1722	0108				worked marble, base of large vessel?
B93617	1705	0101	1	12		
B93624	1705	0113				2 BASES, 2 RIMS, FRAGMENTS
B93630	1705	0113				MOLDED FRAGMENT
B93632	1705	0108				MARBLE VENEER FRAGMENTS
B93641	1705	0109				LARGE LEAD WEIGHT - 3.5X2.2X2.2 cm
B93647	1700	0101	0	12		02-05
B93655	1700	0113				MOLDED BASE
B93658	1700	0109				ATTIC WARE FRAGMENT
B93663	1700	0113				FINE MOLDED BASE
B93674	1700	0108				MARBLE VENEER FRAGMENTS
B93675	1683	0101	0	12		
B93686	1683	0109				LEAD
B93688	1683	0108				WORKED STONE
B93713	1674	0101	0	12		02-05
B93727	1674	0108				MARBLE VENEER FRAGMENTS
B93738	1674	0113				HANDLE AND RIM
B93831	1674	0113				
B93880	1674	0101	0	12		02-06