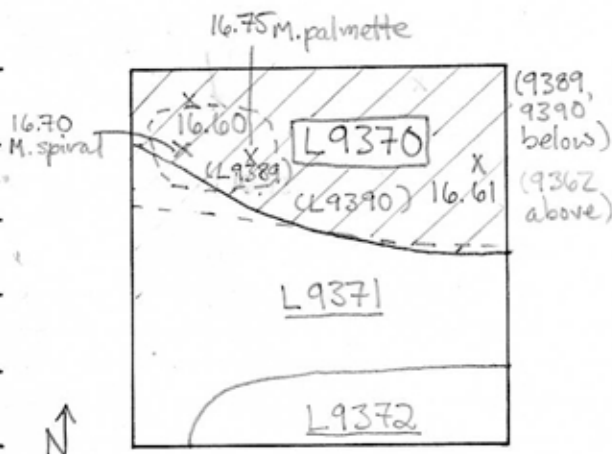


TEL DOR 19 89 field G square AE32 phase (in area): LOCUS L9370  
 date opened 11/07/89 level 16.82-16.68 date closed 13/07/89 level 16.70-16.60 floor level \_\_\_\_\_ type of locus FILL (ROBERT TRENCH)  
 loci above 9362 loci below 9389 9390 sealed by \_\_\_\_\_

graphic description



final locus no.	arch. unit / logical area	stage (in sq.)	final STRATUM

Summary:

**Description:** REASON FOR OPENING: [L9370] OPENED WHEN KURKAR/ CONCRETE SURFACE (FLOOR?) FOUND IN CENTRAL PART OF SQUARE.

**DEF./LIMITS:** [L9370] EXTENDS TO THE NORTH, WEST AND EAST BAULKS. IT IS BORDERED TO THE SOUTH BY [L9371].

**MATRIX:** DARK BROWN SOIL, MATRIX SIMILAR TO TOPSOIL [L9362] BUT WITH LESS POTTERY & TESSERAE. SOME CHUNKS OF BLUE & WHITE MARBLE (FACING).

**REASON FOR CLOSING:** CAME DOWN ON RUBBLE PILE OF MARBLE & SANDSTONE IN NORTH WEST CORNER. SPLIT INTO TWO LOCI (L9389, L9390).

section

photos

- reason for opening
- definition / limits
- reason for closing
- relation to other elements
- working photos, nos:
- publication photos
- architects permission

written by Laura Mill

checked by J. Zorn

**RELATIONS:** [L9370] WAS DIRECTLY UNDER [L9362] [L9389] A PILE OF STONES, AND [L9390] THE FILL SURROUNDING THE STONES, ARE DIRECTLY BELOW [L9370]. [L9370] CUTS THE KURKAR SURFACE (FLOOR?) TO THE SOUTH IN [L9362] AND THE FILL DOWN TO THE SURFACE (FLOOR?) IN [L9371]. [L9370] IS DEFINITELY DISTURBED EITHER BY TOPSOIL OR FLOOR SURFACES. PART OF [L9390] APPEARS TO BE A ROBERT TRENCH AND [L9370] COULD BE PART OF THIS FILL.

