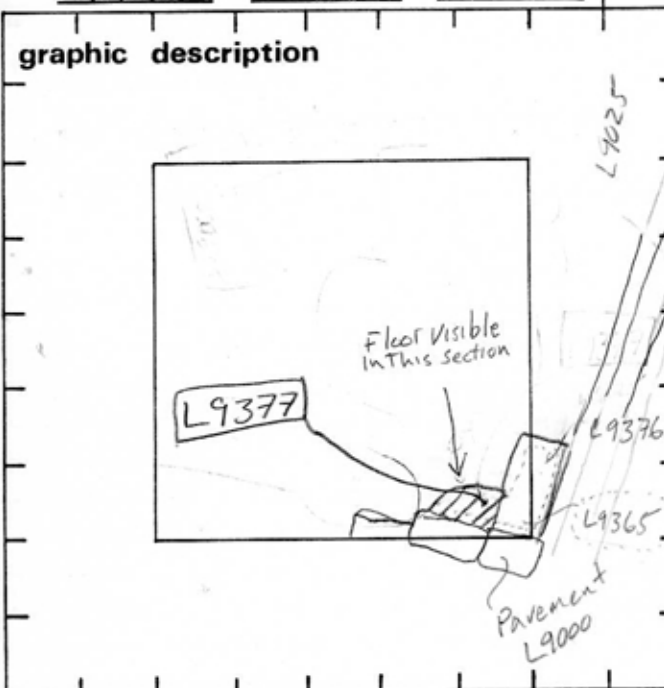


TEL DOR 1989 field G square AJ3.2 phase (in area): LOCUS 49377
 date opened 12/07/89 level 15.41 date closed 14/07/89 level 15.32 floor level 15.32 type of locus Fill coming onto "Floor"
 loci above L9365 loci below L9415 sealed by L9000



final locus no. _____ arch. unit / logical area _____ stage (in sq.) _____ final STRATUM _____

Summary:

Description: OPENED: When 19365 was separated into 2 soil types: L9377 - Light w/ kurkar, and L9376 - darker and sandier.

DEF/LIM: ON East By L9376, South By Fill Below L9000 North and East By Limits of Pedestal Excavated.

MATRIX: Light Brown Sandy Material With Kurkar and Shells. Closed When Fragments of Floor 9093 or 9027 were reached

Relations: Apparently cut by material of L9376 which does not have any remains of floor 9093 or 9027. Sealed above by L9365 (Pavement 9000 makeup and fill). Floor 9093 or 9027 exists in extremely fragmented form, primarily

section

appearing in pedestal section. Floor 9093 in AJ34 (15.55-15.52m) or floor 9027 in AJ32 (15.74-15.65m) may be the floor material onto which

- photos**
- reason for opening
 - definition / limits
 - reason for closing
 - relation to other elements
 - working photos, nos:
 - publication photos
 - architects permission
- written by R. Lindstrom checked by J. Zorn

This locus came down -

167/27 IRIV? S 28

