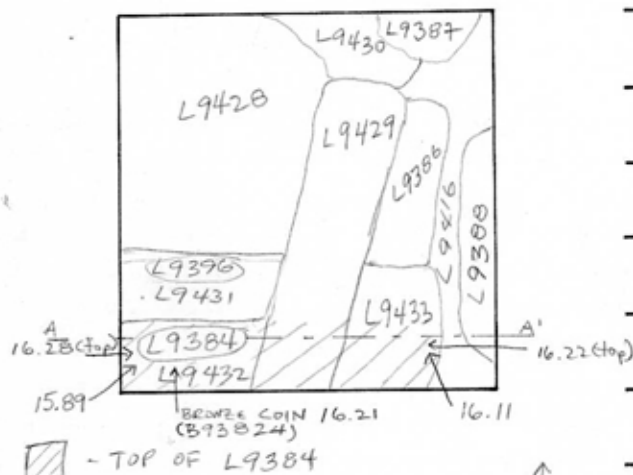


TEL DOR 19 89 field G square A.6.34 phase (in area): LOCUS L9384
 date opened 17/07/89 level 1628 date closed 18/07/89 level 16.11 floor level 1589 type of locus STRATIFIED ACCUMULATION
 loci above L9360 loci below L9429 L9432 sealed by _____

graphic description

BOTTOM PLAN OF L9384

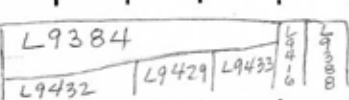


final locus no. _____ arch. unit / logical area _____ stage (in sq.) _____ final STRATUM _____

Summary:

Description: OPENED: UPON REACHING CHANGE IN SOIL BELOW SURFACE SOIL [L9360] FROM BLACK-BROWN TO RED-BROWN
DEFINITION/LIMITS: BOUNDED BY WEST AND SOUTH BALKS; REACHES [L9416], [L9396]
CLOSED: UPON REACHING POSSIBLE ROBBER TRENCH [L9429] COMPOSED OF DARK BROWN SOIL WITH MANY ROCKS.
MATRIX: MEDIUM-PACKED RED-BROWN SOIL WITH A FEW LARGE ROCKS, MANY SMALL ROCKS, FEW TESSERAE, SHELLS
RELATION TO OTHER ELEMENTS: OVERLIES [L9429], [L9432], [L9433] CUT BY POSSIBLE ROBBER TRENCH [L9396].

section A



Possibly represents late robbing of probable Roman paving which likely existed between 9282 and 7096

photos

- reason for opening
- definition / limits
- reason for closing
- relation to other elements
- working photos, nos:
- publication photos
- architects permission

written by A.M. ABRALDES checked by J. Zorn

