

TEL DOR 1989 field G square A63.4 phase (in area): LOCUS L9385
 date opened 13/07/89 level 1632 date closed 18/07/89 level 16.11 floor level 1599 type of locus
STRATIFIED ACCUMULATION
 loci above L9360 loci below L9428 L9429 sealed by _____
L9430

graphic description final locus no. arch. unit / logical area stage (in sq.) final STRATUM

Summary:

Description: OPENED: UPON REACHING CHANGE IN SOIL

BELOW SURFACE SOIL, [L9360] FROM BLACK-BROWN TO SANDY RED

DEFINITION/LIMITS: BOUNDED BY WEST AND NORTH Baulks

REACHES [L9387], [L9396], [L9386] & L9416

CLOSED: UPON REACHING POSSIBLE ROBBER TRENCHES

[L9430] COMPOSED OF MUCH RUBBLE AND A FEW SQUARED BLOCKS, AND

[L9429] COMPOSED OF DARK BROWN SOIL WITH MANY ROCKS.

MATRIX: SANDY REDDISH SOIL WITH MANY LARGE ROCKS, GREAT QUANTITY

OF SHELLS MUCH RED CLAY IN NORTHERN HALF OF LOCUS. CONCENTRATION

OF PLASTER FRAGMENTS IN NORTHEAST CORNER OF LOCUS.

RELATION TO OTHER ELEMENTS: OVERLIES POSSIBLE

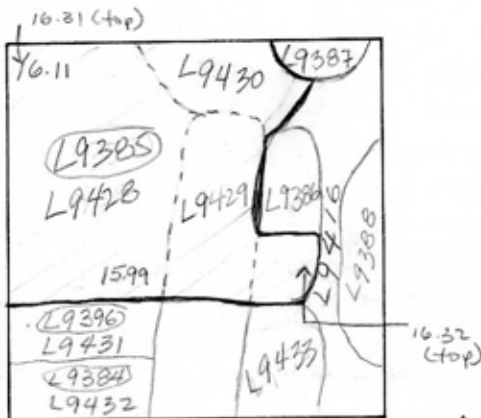
ROBBER TRENCHES [L9430] AND [L9429];

OVERLIES SOUTHERN HALF OF ^{sloping} CEMENT DEBRIS [L9386]

CUT BY POSSIBLE ROBBER TRENCH [L9396]; REACHES

AND [L9416]

graphic description



HEAVY SOLID LINE INDICATES TOP OF L9385
 DOTTED LINES INDICATE DIVISION OF LOCI BELOW L9385

section

photos

- reason for opening
- definition / limits
- reason for closing
- relation to other elements
- working photos, nos:
- publication photos
- architects permission

written by A.M. ARRANDES checked by J. Zorn

